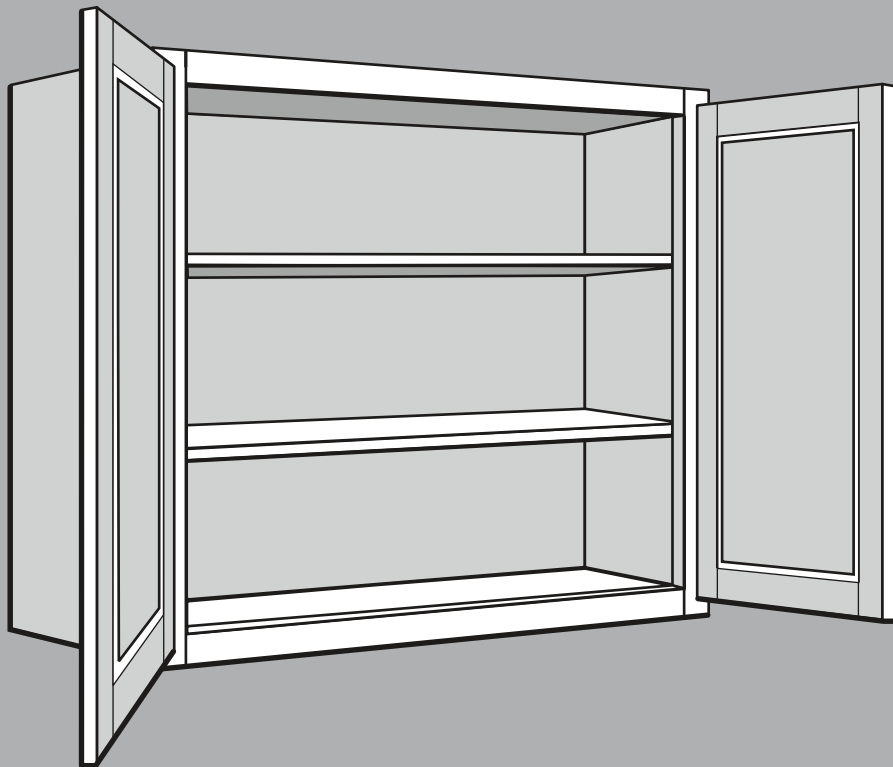
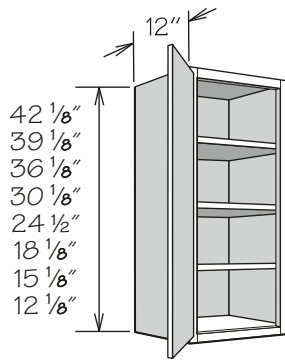


Wall Cabinets



Wall Cabinets - 1 Door



42" High Shown

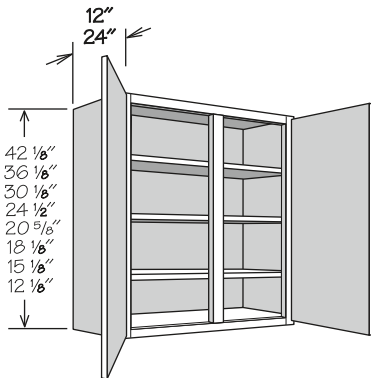
- Specialty Door cabinets (SD) feature Matching Interior standard and require a specialty door selection
- Must be ordered as hinged left or right
- 18", 15" and 12" high wall cabinets are not drilled for adjustable shelf

APC
CFO
FE
ID
MI ■
PE
RD
VDO ■

12" DEEP

42"H • 3 Shelves	39"H • 3 Shelves	36"H • 2 Shelves	30"H • 2 Shelves	24"H • 1 Shelf	18"H • No Shelf	15"H • No Shelf	12"H • No Shelf
W942 ■	W939 ■	W936 ■	W930 ■	W1224 ■	W1218 ■	W1215 ■	W1212 ■
W1242 ■	W1239 ■	W1236 ■	W1230 ■	W1524 ■	W1518 ■	W1515 ■	W1512 ■
W1542 ■	W1539 ■	W1536 ■	W1530 ■	W1824 ■	W1818 ■	W1815 ■	W1812 ■
W1842 ■	W1839 ■	W1836 ■	W1830 ■	W2124 ■	W2118 ■	W2115 ■	W2112 ■
W2142 ■	W2139 ■	W2136 ■	W2130 ■	W1224 SD	W1218 SD	W1215 SD	W1212 SD
W1242 SD	W1239 SD	W1236 SD	W2430 ■	W1524 SD	W1518 SD	W1515 SD	W1512 SD
W1542 SD	W1539 SD	W1536 SD	W1230 SD	W1824 SD	W1818 SD	W1815 SD	W1812 SD
W1842 SD	W1839 SD	W1836 SD	W1530 SD	W2124 SD	W2118 SD	W2115 SD	W2112 SD
W2142 SD	W2139 SD	W2136 SD	W1830 SD				
			W2130 SD				

Wall Cabinets - 2 Doors



42" High Shown

- Specialty Door cabinets (SD) feature Matching Interior standard and require a specialty door selection
- 24" deep cabinets must be installed by:
 - » Securely attaching to studs in back wall and both sides or to studs in back wall, one side and top (e.g. two adjacent cabinets or one adjacent cabinet and a wall)
 - » And must be either stacked, floor mounted or installed over a refrigerator
- 21", 18", 15" and 12" high wall cabinets are not drilled for adjustable shelf
- Center shelf support provided on cabinets 39" or wider (where applicable)

APC
CFO
FE
MI ■
PE
CFO
VDO ■

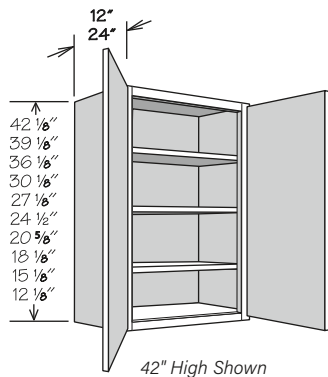
12" DEEP

42"H • 3 Shelves	30"H • 2 Shelves	21"H • No Shelf	15"H • No Shelf
W3942 ■	W3930 ■	W3921 ■	W3915 ■
W4242 ■	W4230 ■	W3921 SD	W3915 SD
W3942 SD	W4830 ■		
W4242 SD	W3930 SD	18"H • No Shelf	12"H • No Shelf
	W4230 SD	W3918 ■	W3912 ■
36"H • 3 Shelves	24"H • 1 Shelf	W4218 ■	W3912 SD
W3936 ■	W3924 ■	W3918 SD	
W4236 ■	W4224 ■	W4218 SD	
W3936 SD	W3924 SD		
W4236 SD	W4224 SD		

24" DEEP

24"H • 1 Shelf	21"H • No Shelf	18"H • No Shelf	15"H • No Shelf	12"H • No Shelf
W3924 x 24 DP ■	W3921 X 24 DP ■	W3918 X 24 DP ■	W3915 X 24 DP ■	W3912 X 24 DP ■
W3924 X 24 DP SD	W3921 X 24 DP SD	W3918 X 24 DP SD	W3915 X 24 DP SD	W3912 X 24 DP SD

Wall Cabinets - 2 Butt Doors



- Specialty Door cabinets (SD) feature Matching Interior standard and require a specialty door selection
- 24" deep cabinets must be installed by:
 - » Securely attaching to studs in back wall and both sides or to studs in back wall, one side and top (e.g. two adjacent cabinets or one adjacent cabinet and a wall)
 - » And must be either stacked, floor mounted or installed over a refrigerator
- 21", 18", 15" and 12" high wall cabinets are not drilled for adjustable shelf

APC
CFO
FE
ID ◆
MI ■
PE
RD
VDO ■

12" DEEP

42"H • 3 Shelves

W2442 BUTT ■ ◆
W2742 BUTT ■ ◆
W3042 BUTT ■ ◆
W3342 BUTT ■ ◆
W3642 BUTT ■ ◆
W2442 BUTT SD ◆
W2742 BUTT SD ◆
W3042 BUTT SD ◆
W3342 BUTT SD ◆
W3642 BUTT SD ◆

39"H • 3 Shelves

W2439 BUTT ■ ◆
W2739 BUTT ■ ◆
W3039 BUTT ■ ◆
W3339 BUTT ■ ◆
W3639 BUTT ■ ◆
W2439 BUTT SD ◆
W2739 BUTT SD ◆
W3039 BUTT SD ◆
W3339 BUTT SD ◆
W3639 BUTT SD ◆

36"H • 2 Shelves

W2436 BUTT ■ ◆
W2736 BUTT ■ ◆
W3036 BUTT ■ ◆
W3336 BUTT ■ ◆
W3636 BUTT ■ ◆
W2436 BUTT SD ◆
W2736 BUTT SD ◆
W3036 BUTT SD ◆
W3336 BUTT SD ◆
W3636 BUTT SD ◆

30"H • 2 Shelves

W2430 BUTT ■ ◆
W2730 BUTT ■ ◆
W3030 BUTT ■ ◆
W3330 BUTT ■ ◆
W3630 BUTT ■ ◆
W2430 BUTT SD ◆
W2730 BUTT SD ◆
W3030 BUTT SD ◆
W3330 BUTT SD ◆
W3630 BUTT SD ◆

27"H • 1 Shelf

W3027 BUTT ■ ◆
W3027 BUTT SD ◆

24"H • 1 Shelf

W2424 BUTT ■ ◆
W2724 BUTT ■ ◆
W3024 BUTT ■ ◆
W3324 BUTT ■ ◆
W3624 BUTT ■ ◆
W2424 BUTT SD ◆
W2724 BUTT SD ◆
W3024 BUTT SD ◆
W3324 BUTT SD ◆
W3624 BUTT SD ◆

21"H • No Shelf

W3021 BUTT ■ ◆
W3321 BUTT ■ ◆
W3621 BUTT ■ ◆
W3021 BUTT SD ◆
W3321 BUTT SD ◆
W3621 BUTT SD ◆

18"H • No Shelf

W2418 BUTT ■ ◆
W2718 BUTT ■ ◆
W3018 BUTT ■ ◆
W3318 BUTT ■ ◆
W3618 BUTT ■ ◆
W2418 BUTT SD ◆
W2718 BUTT SD ◆
W3018 BUTT SD ◆
W3318 BUTT SD ◆
W3618 BUTT SD ◆

15"H • No Shelf

W2415 BUTT ■ ◆
W2715 BUTT ■ ◆
W3015 BUTT ■ ◆
W3315 BUTT ■ ◆
W3615 BUTT ■ ◆
W2415 BUTT SD ◆
W2715 BUTT SD ◆
W3015 BUTT SD ◆
W3315 BUTT SD ◆
W3615 BUTT SD ◆

12"H • No Shelf

W2412 BUTT ■ ◆
W2712 BUTT ■ ◆
W3012 BUTT ■ ◆
W3312 BUTT ■ ◆
W3612 BUTT ■ ◆
W2412 BUTT SD ◆
W2712 BUTT SD ◆
W3012 BUTT SD ◆
W3312 BUTT SD ◆
W3612 BUTT SD ◆

24" DEEP

27"H • 1 Shelf

W3027 X 24 DP BUTT ■
W3027 X 24 DP BUTT SD

24"H • 1 Shelf

W3024 X 24 DP BUTT ■
W3324 X 24 DP BUTT ■
W3624 X 24 DP BUTT ■
W3724 X 24 DP BUTT ■
W3024 X 24 DP BUTT SD
W3324 X 24 DP BUTT SD
W3624 X 24 DP BUTT SD
W3724 X 24 DP BUTT SD

21"H • No Shelf

W3021 X 24 DP BUTT ■
W3321 X 24 DP BUTT ■
W3621 X 24 DP BUTT ■
W3721 X 24 DP BUTT ■
W3021 X 24 DP BUTT SD
W3321 X 24 DP BUTT SD
W3621 X 24 DP BUTT SD
W3721 X 24 DP BUTT SD

18"H • No Shelf

W3018 X 24 DP BUTT ■
W3318 X 24 DP BUTT ■
W3618 X 24 DP BUTT ■
W3718 X 24 DP BUTT ■
W3018 X 24 DP BUTT SD
W3318 X 24 DP BUTT SD
W3618 X 24 DP BUTT SD
W3718 X 24 DP BUTT SD

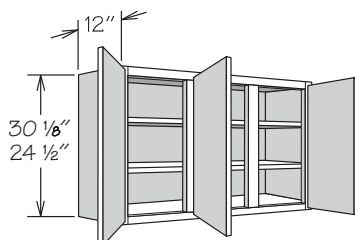
15"H • No Shelf

W3015 X 24 DP BUTT ■
W3315 X 24 DP BUTT ■
W3615 X 24 DP BUTT ■
W3715 X 24 DP BUTT ■
W3015 X 24 DP BUTT SD
W3315 X 24 DP BUTT SD
W3615 X 24 DP BUTT SD
W3715 X 24 DP BUTT SD

12"H • No Shelf

W3012 X 24 DP BUTT ■
W3312 X 24 DP BUTT ■
W3612 X 24 DP BUTT ■
W3712 X 24 DP BUTT ■
W3012 X 24 DP BUTT SD
W3312 X 24 DP BUTT SD
W3612 X 24 DP BUTT SD
W3712 X 24 DP BUTT SD

Wall Cabinets - 3 Doors



- Hinged as shown
- Center shelf support provided

APC
CFO
FE
MI ■
PE
RD
VDO ■

3 DOORS

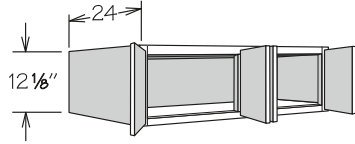
30"H • 2 Shelves

W4530 ■
W4530 SD

24"H • 1 Shelf

W4524 ■
W4524 SD

Wall Cabinets • 4 Doors



- Two sets of BUTT doors
- Cabinet must be installed by:
 - » Securely attaching to studs in back wall and both sides or to studs in back wall, one side and top (e.g. two adjacent cabinets or one adjacent cabinet and a wall)
 - » And must be either stacked, floor mounted or installed over a refrigerator

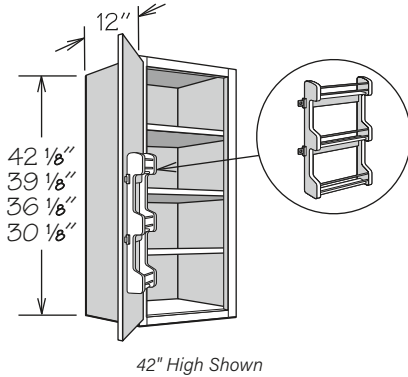
APC
CFO
FE
MI
PE
RD
VDO

4 BUTT DOORS

12"H • No Shelves

W4812 X 24 DP BUTT

Wall Cabinet with Spice Rack • 1 Door



- Spice Rack Kit packaged separately for field installation
- Position adjustable shelves prior to installation
- Kit in natural finish solid wood features chrome rails and three fixed shelves
- Must be ordered as hinged left or right

APC
FE
ID
MI
PE

12" DEEP

42"H • 3 Shelves

W1542 SR
W1842 SR
W2142 SR

36"H • 2 Shelves

W1536 SR
W1836 SR
W2136 SR

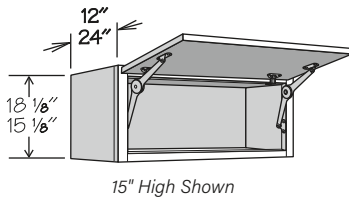
39"H • 3 Shelves

W1539 SR
W1839 SR
W2139 SR

30"H • 2 Shelves

W1530 SR
W1830 SR
W2130 SR

Wall Top Hinge • 1 Door



- Features one pair of factory installed, field adjustable lid stays that supports door securely at any angle up to 105°
- Cabinet can be flipped to open downwards and lid stay can be adjusted to support door
- Door rail and stile configuration and insert panel grain direction will differ from standard wall cabinets, except for Sydney in Breeze and Drift finishes
- Sydney in Breeze and Drift finishes features a door with vertical grain direction to match standard wall cabinets
- Specialty Door cabinets (SD) feature Matching Interior standard and require a specialty door selection
- 24" deep cabinets must be installed by:
 - » Securely attaching to studs in back wall and both sides or to studs in back wall, one side and top (e.g. two adjacent cabinets or one adjacent cabinet and a wall)
 - » And must be either stacked, floor mounted or installed over a refrigerator

APC
FE
ID ♦
MI ■
PE
RD
VDO ■

12" DEEP

18"H • No Shelf

WTH3018 ■ ♦
WTH3618 ■ ♦
WTH3018 SD ♦
WTH3618 SD ♦

15"H • No Shelf

WTH3015 ■ ♦
WTH3615 ■ ♦
WTH3015 SD ♦
WTH3615 SD ♦

24" DEEP

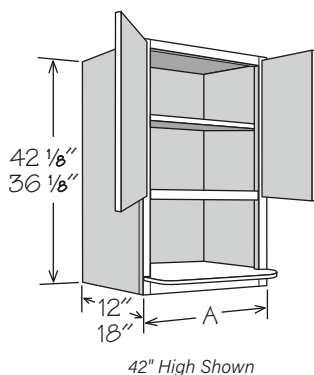
18"H • No Shelf

WTH3018 X 24 DP ■
WTH3618 X 24 DP ■
WTH3018 X 24 DP SD
WTH3618 X 24 DP SD

15"H • No Shelf

WTH3015 X 24 DP ■
WTH3615 X 24 DP ■
WTH3015 X 24 DP SD
WTH3615 X 24 DP SD

Wall Microwave Cabinets • 2 Butt Doors

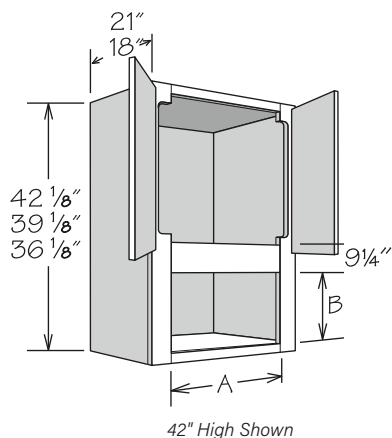


- Must be installed between two adjacent cabinets or a cabinet and a wall
- Cabinet interior and microwave shelf is finished to match cabinet box exterior
- 3/4" plywood microwave shelf included
- Designed to accommodate countertop style microwave
- Refer to appliance manufacturer's specifications for adequate clearances
- 36" high not drilled for adjustable shelf

APC
FE
PE
RD
VDO

12" DEEP	A	LOWER FRAME OPENING		
		WIDTH	HEIGHT	DEPTH
36"H • No Shelf				
WMSC271236 BUTT	27"	23 ¾"	18 ⅝"	17 ¾"
WMSC301236 BUTT	30"	26 ¾"	18 ⅝"	17 ¾"
WCMSC241236 BUTT	24"	20 ¾"	15 ⅝"	17 ¾"
WCMSC271236 BUTT	27"	23 ¾"	15 ⅝"	17 ¾"
18" DEEP				
42"H • 1 Shelf				
WMSC271842 BUTT	27"	23 ¾"	15 ¼"	23 ¾"
36"H • No Shelf				
WMSC271836 BUTT	27"	23 ¾"	18 ⅝"	23 ¾"

Microwave Wall Cabinets • 2 Butt Doors

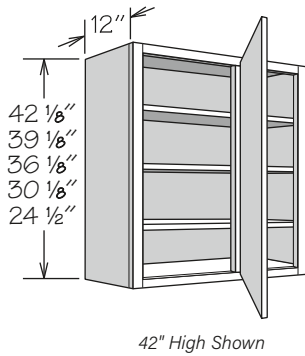


- Must be installed between two cabinets or a cabinet and a wall
- Designed to accommodate microwaves with trim kit
- A cutout exists in the door area where the 3 1/8" stiles are routed to 1 5/8"
- Refer to appliance manufacturers specifications for adequate clearances
- Not drilled for adjustable shelf

APC
FE
ID
MI
PE
RD

18" DEEP	A ACTUAL	A MAX.	B ACTUAL	B MAX. (FOL)	B MAX. (POL)
42"H • No Shelf					
WMC301842 BUTT	23 3/4"	28"	12 1/4"	19 1/2"	20"
39"H • No Shelf					
WMC271839 BUTT	20 3/4"	25"	11 3/4"	19 1/2"	20"
WMC301839 BUTT	23 3/4"	28"	11 3/4"	19 1/2"	20"
36"H • No Shelf					
WMC271836 BUTT	20 3/4"	25"	11 3/4"	19 1/2"	20"
WMC301836 BUTT	23 3/4"	28"	11 3/4"	19 1/2"	20"
21" DEEP					
42"H • No Shelf					
WMC302142 BUTT	23 3/4"	28"	12 1/4"	19 1/2"	20"
39"H • No Shelf					
WMC272139 BUTT	20 3/4"	25"	11 3/4"	19 1/2"	20"
WMC302139 BUTT	23 3/4"	28"	11 3/4"	19 1/2"	20"
36"H • No Shelf					
WMC272136 BUTT	20 3/4"	25"	11 3/4"	19 1/2"	20"
WMC302136 BUTT	23 3/4"	28"	11 3/4"	19 1/2"	20"

Blind Wall Cabinet • 1 Door



- Cabinet shown as right indicating blind opening is on the right side of cabinet (must be ordered as left or right)
- Includes 1/8" panel to cover blind opening (field trim and install)
- Refer to Blind Wall Cabinet Installation Chart for specifications
- Must order Universal Filler separately
- Specialty Door cabinets (SD) feature Matching Interior standard and require a specialty door selection

APC
CFO
FE
ID
MI ■
PE
RD
VDO ■

12" DEEP

42"H • 3 Shelves

BLW24/2742 ■
 BLW30/3342 ■
 BLW33/3642 ■
 BLW24/2742 SD
 BLW30/3342 SD
 BLW33/3642 SD

39"H • 3 Shelves

BLW24/2739 ■
 BLW30/3339 ■
 BLW33/3639 ■
 BLW24/2739 SD
 BLW30/3339 SD
 BLW33/3639 SD

36"H • 2 Shelves

BLW24/2736 ■
 BLW30/3336 ■
 BLW33/3636 ■
 BLW24/2736 SD
 BLW30/3336 SD
 BLW33/3636 SD

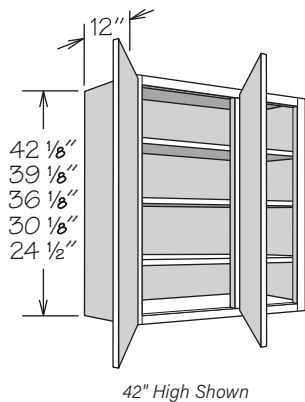
30"H • 2 Shelves

BLW24/2730 ■
 BLW27/3030 ■
 BLW30/3330 ■
 BLW33/3630 ■
 BLW36/3930 ■
 BLW24/2730 SD
 BLW27/3030 SD
 BLW30/3330 SD
 BLW33/3630 SD

24"H • 1 Shelf

BLW24/2724 ■
 BLW27/3024 ■
 BLW30/3324 ■
 BLW33/3624 ■
 BLW24/2724 SD
 BLW27/3024 SD
 BLW30/3324 SD
 BLW33/3624 SD

Blind Wall Cabinet • 2 Butt Doors



- Cabinet shown as right indicating blind opening is on the right side of cabinet (can be reversed in the field)
- Includes 1/8" panel to cover blind opening (field trim and install)
- Refer to Blind Wall Cabinet Installation Chart for specifications
- Must order Universal Filler separately
- Specialty Door cabinets (SD) feature Matching Interior standard and require a specialty door selection
- Center shelf support provided on cabinets 39" or wider

APC
CFO
FE
ID ◆
MI ■
PE
RD
VDO ■

12" DEEP

42"H • 3 Shelves

BLW36/3942 BUTT ■ ◆
 BLW39/4242 BUTT ■
 BLW42/4542 BUTT ■
 BLW36/3942 BUTT SD ◆
 BLW39/4242 BUTT SD
 BLW42/4542 BUTT SD

39"H • 3 Shelves

BLW36/3939 BUTT ■ ◆
 BLW39/4239 BUTT ■
 BLW42/4539 BUTT ■
 BLW36/3939 BUTT SD ◆
 BLW39/4239 BUTT SD
 BLW42/4539 BUTT SD

36"H • 2 Shelves

BLW36/3936 BUTT ■ ◆
 BLW39/4236 BUTT ■
 BLW42/4536 BUTT ■
 BLW36/3936 BUTT SD ◆
 BLW39/4236 BUTT SD
 BLW42/4536 BUTT SD

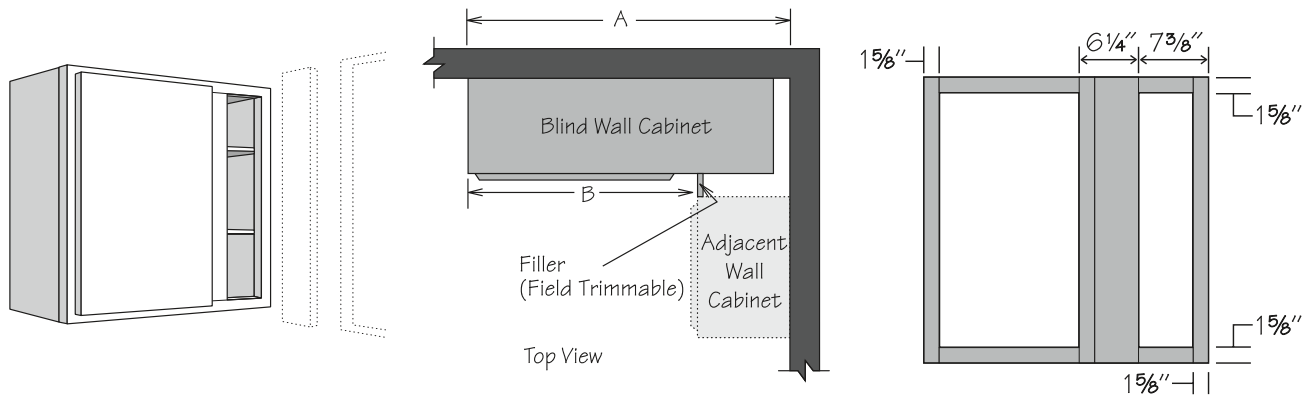
30"H • 2 Shelves

BLW36/3930 BUTT ■ ◆
 BLW39/4230 BUTT ■
 BLW42/4530 BUTT ■
 BLW45/4830 BUTT ■
 BLW48/5130 BUTT ■
 BLW36/3930 BUTT SD ◆
 BLW39/4230 BUTT SD
 BLW42/4530 BUTT SD
 BLW45/4830 BUTT SD
 BLW48/5130 BUTT SD

24"H • 1 Shelf

BLW36/3924 BUTT ■ ◆
 BLW36/3924 BUTT SD ◆

Blind Wall Cabinet Installation Chart



Full Overlay Door Styles

Full Overlay door styles require decorative hardware, which has been calculated into dimensions.

Cabinet	Actual Cabinet Width	Door Opening	Door(s)	Wall Space A			Exposed Frame B	
				Minimum Space*	Maximum Pull	Maximum Space	Minimum Space*	Maximum Space
BLW24/27_	24"	8 3/4"	DR12_	26 1/4"	1 3/4"	28"	14 1/4"	16"
BLW27/30_	27"	11 3/4"	DR15_	29 1/4"	1 3/4"	31"	17 1/4"	19"
BLW30/33_	30"	14 3/4"	DR18_	32 1/4"	1 3/4"	34"	20 1/4"	22"
BLW33/36_	33"	17 3/4"	DR21_	35 1/4"	1 3/4"	37"	23 1/4"	25"
BLW36/3930	36"	20 3/4"	DR2430	38 1/4"	1 3/4"	40"	26 1/4"	28"
BLW36/39_ BUTT	36"	20 3/4"	DR12_ BUTT (2)	38 1/4"	1 3/4"	40"	26 1/4"	28"
BLW39/42_ BUTT	39"	23 3/4"	DR13_ BUTT (2)	41 1/4"	1 3/4"	43"	29 1/4"	31"
BLW42/45_ BUTT	42"	26 3/4"	DR15_ BUTT (2)	44 1/4"	1 3/4"	46"	32 1/4"	34"
BLW45/48_ BUTT	45"	29 3/4"	DR16_ BUTT (2)	47 1/4"	1 3/4"	49"	35 1/4"	37"
BLW48/51_ BUTT	48"	32 3/4"	DR18_ BUTT (2)	50 1/4"	1 3/4"	52"	38 1/4"	40"

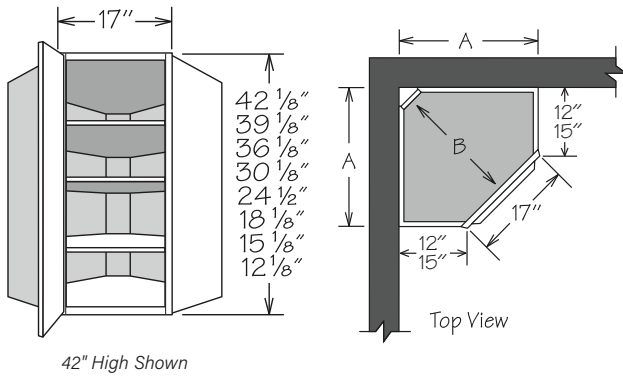
*Dimension requirements do not include optional Overlay Fillers - add 7/8" if Overlay Fillers will be used.

Partial Overlay Door Styles

Wall Space A requirements include optional decorative hardware clearance. 1/4" may be deducted if decorative hardware is not used.

Cabinet	Actual Cabinet Width	Door Opening	Door(s)	Wall Space A			Exposed Frame B	
				Minimum Space	Maximum Pull	Maximum Space	Minimum Space	Maximum Space
BLW24/27_	24"	8 3/4"	DR12_	25 3/8"	2 5/8"	28"	13 3/8"	16"
BLW27/30_	27"	11 3/4"	DR15_	28 3/8"	2 5/8"	31"	16 3/8"	19"
BLW30/33_	30"	14 3/4"	DR18_	31 3/8"	2 5/8"	34"	19 3/8"	22"
BLW33/36_	33"	17 3/4"	DR21_	34 3/8"	2 5/8"	37"	22 3/8"	25"
BLW36/3930	36"	20 3/4"	DR2430	37 3/8"	2 5/8"	40"	25 3/8"	28"
BLW36/39_ BUTT	36"	20 3/4"	DR12_ BUTT (2)	37 3/8"	2 5/8"	40"	25 3/8"	28"
BLW39/42_ BUTT	39"	23 3/4"	DR13_ BUTT (2)	40 3/8"	2 5/8"	43"	28 3/8"	31"
BLW42/45_ BUTT	42"	26 3/4"	DR15_ BUTT (2)	43 3/8"	2 5/8"	46"	31 3/8"	34"
BLW45/48_ BUTT	45"	29 3/4"	DR16_ BUTT (2)	46 3/8"	2 5/8"	49"	34 3/8"	37"
BLW48/51_ BUTT	48"	32 3/4"	DR18_ BUTT (2)	49 3/8"	2 5/8"	52"	37 3/8"	40"

Corner Wall Cabinets



- Must be ordered as hinged left or right
- Door opening is 11 3/4" wide
- Features a DR15_ door
- Specialty Door cabinets (SD) feature Matching Interior standard and require a specialty door selection
- 24" high cabinet's shelf is adjustable, not removable
- Glass Shelf Kit is not available for 24", 18", 15" and 12" high cabinets

APC
FE
MI ■
PE
VDO ■

	A	B
12" Deep	24"	21 1/2"
15" Deep	27"	25 3/4"

12" DEEP

42"H • 3 Shelves

CW2442 ■
CW2442 SD

36"H • 2 Shelves

CW2436 ■
CW2436 SD

24"H • 1 Shelf

CW2424 ■
CW2424 SD

18"H • No Shelf

CW2418 ■
CW2418 SD

15"H • No Shelf

CW2415 ■
CW2415 SD

12"H • No Shelf

CW2412 ■
CW2412 SD

39"H • 3 Shelves

CW2439 ■
CW2439 SD

30"H • 2 Shelves

CW2430 ■
CW2430 SD

15" DEEP

42"H • 3 Shelves

CW2742 ■
CW2742 SD

36"H • 2 Shelves

CW2736 ■
CW2736 SD

24"H • 1 Shelf

CW2724 ■
CW2724 SD

18"H • No Shelf

CW2718 ■
CW2718 SD

15"H • No Shelf

CW2715 ■
CW2715 SD

12"H • No Shelf

CW2712 ■
CW2712 SD

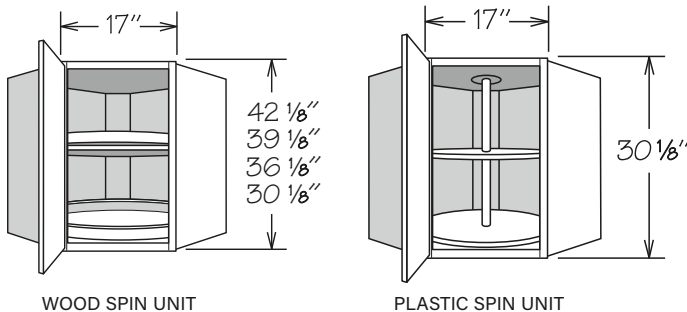
39"H • 3 Shelves

CW2739 ■
CW2739 SD

30"H • 2 Shelves

CW2730 ■
CW2730 SD

Corner Wall Cabinets • Spin Units



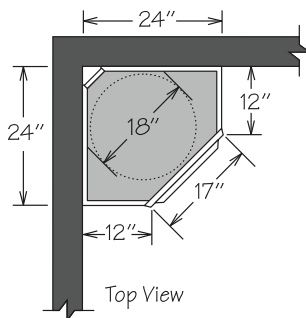
WOOD SPIN UNIT

PLASTIC SPIN UNIT

30" High Shown

- Must be ordered as hinged left or right
- Door opening is 11 3/4" wide
- Features a DR15_ door
- Wood Spin Units feature:
 - » One fixed spin unit mounted on cabinet floor and all other spin units are attached to 3/4" adjustable shelf
 - » Natural wood finish with 1" lip
- Plastic Spin Units feature:
 - » Two spin shelves with pole (top shelf adjustable)
 - » White high strength plastic shelves
- Specialty Door cabinets (SD) feature Matching Interior standard and require a specialty door selection

APC
FE
MI ■
PE
VDO ■



WOOD SPIN UNIT

42"H • 3 Spin Units

CWS2442 WD ■
CWS2442 WD SD

39"H • 3 Spin Units

CWS2439 WD ■
CWS2439 WD SD

36"H • 2 Spin Units

CWS2436 WD ■
CWS2436 WD SD

30"H • 2 Spin Units

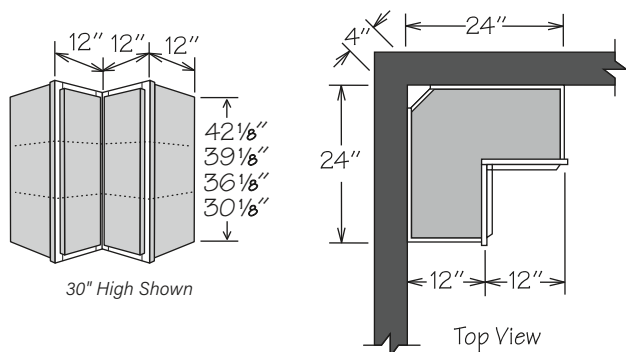
CWS2430 WD ■
CWS2430 WD SD

PLASTIC SPIN UNIT

30"H • 2 Spin Units

CWS2430 ■
CWS2430 SD

Wall Easy Reach



- Must be ordered as hinged left or right
- Stile width and outside profile of both doors at door-to-door hinge may vary from standard dimension and profile for proper door function
- Doors open 170°
- Not available with CushionClose hinges
- Face frame will be notched for hinges on full overlay (FOL) door styles

APC
FE
MI
PE

12" DEEP

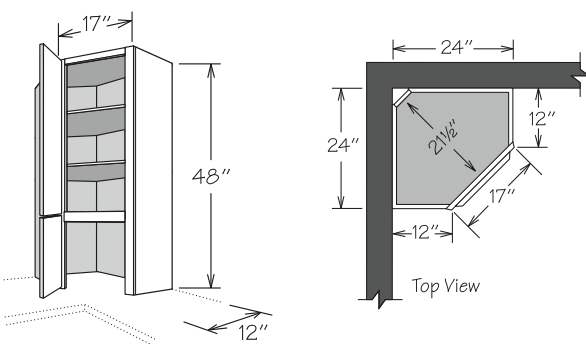
42"H • 3 Shelves
WER2442

39"H • 3 Shelves
WER2439

36"H • 2 Shelves
WER2436

30"H • 2 Shelves
WER2430

Corner Wall Cabinet • Appliance Garage



- Features two doors:
 - » (1) DR1530
 - » (1) DR1518
- 11 3/4" wide x 26 7/8" high top door opening
- 11 3/4" wide x 16 1/4" high appliance garage opening
- Specialty Door option only applies to top door - DR1518 SD can be ordered separately for appliance garage
- Specialty Door cabinets (SD) feature Matching Interior standard and require a specialty door selection

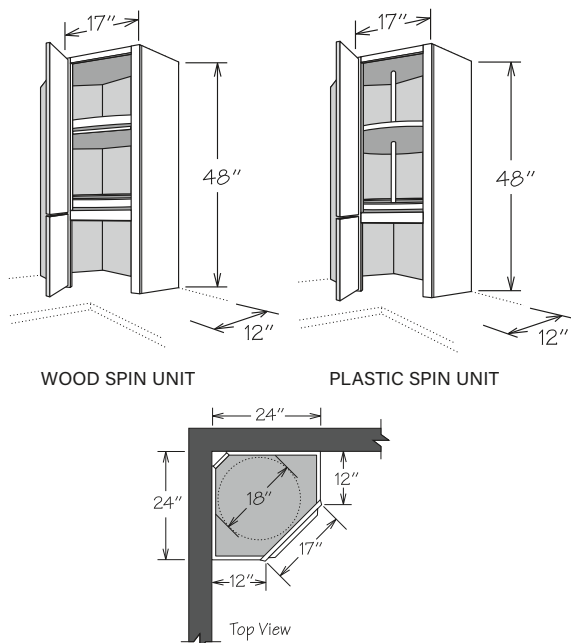
APC
FE
MI ■
PE
VDO ■

12" DEEP

48"H • 2 Shelves

CWD2448 ■
CWD2448 SD

Corner Wall Cabinet • Appliance Garage with Spin Units



WOOD SPIN UNIT

PLASTIC SPIN UNIT

- Wood Spin Units feature:
 - » One fixed spin unit mounted on cabinet floor
 - » One spin unit attached to 3/4" adjustable shelf
 - » Natural wood finish with 1" lip
- Plastic Spin Units feature:
 - » Two spin shelves with pole (top shelf adjustable)
 - » White high strength plastic shelves
- Features two doors:
 - » (1) DR1530
 - » (1) DR1518
- 11 3/4" wide x 26 7/8" high top door opening
- 11 3/4" wide x 16 1/4" high appliance garage opening
- Specialty Door option only applies to top door - DR1518 SD can be ordered separately for appliance garage
- Specialty Door cabinets (SD) feature Matching Interior standard and require a specialty door selection

APC
FE
MI ■
PE
VDO ■

WOOD SPIN UNIT

48"H • 2 Spin Units

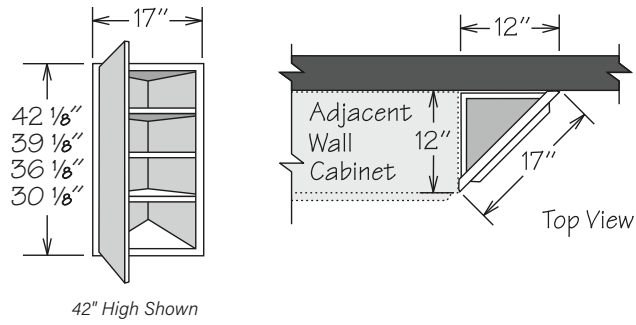
CWDS2448 WD ■
CWDS2448 WD SD

PLASTIC SPIN UNIT

48"H • 2 Spin Units

CWDS2448 ■
CWDS2448 SD

Wall End Angle - 1 Door



- Requires 12" x 12" space
- Features a DR15_ door
- Must be ordered as hinged left or right
- Specialty Door cabinets (SD) feature Matching Interior standard and require a specialty door selection

APC
MI ■
PE
VDO ■

12" DEEP

42"H • 3 Shelves

WEA1242 ■
WEA1242 SD

39"H • 3 Shelves

WEA1239 ■
WEA1239 SD

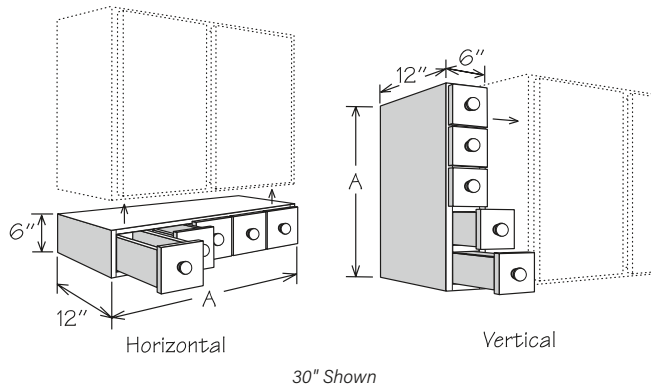
36"H • 2 Shelves

WEA1236 ■
WEA1236 SD

30"H • 2 Shelves

WEA1230 ■
WEA1230 SD

Spice Drawer Cabinet

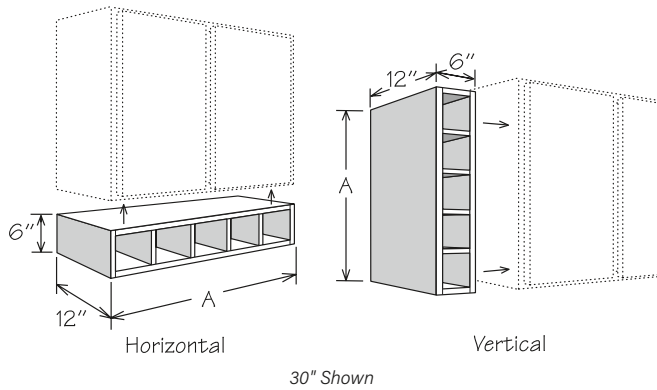


- Designed for horizontal or vertical installation
- Vertical installation may require the use of fillers and/or molding which must be ordered separately
- All door styles feature veneered engineered wood with 1/2" thick slab drawer fronts
- Flush sides with no face frame or 1/4" reveals
- All wood drawer body with dovetail construction
- Linen and Pewter door styles feature white porcelain knobs and all other finishes feature matching wooden knobs
- Duraform door styles feature drawer fronts finished to match cabinet box exterior

12" DEEP

	A	NUMBER OF DRAWERS
SDC18	18"	3
SDC24	24"	4
SDC30	30"	5
SDC36	36"	6

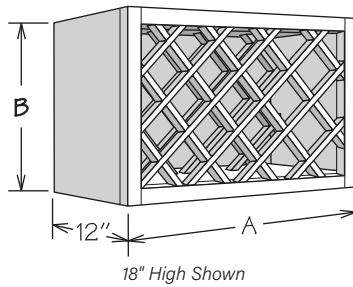
Storage Cube



- Designed for horizontal or vertical installation
- Vertical installation may require the use of fillers and/or molding which must be ordered separately
- Opening size is 5" wide x 4½" high (horizontal) which will accommodate most wine bottles and various other storage needs
- All door styles feature ¾" veneered engineered wood finished to match cabinet box exterior
- Flush sides with no face frame or ¼" reveals
- Interior finished to match cabinet box exterior
- Cannot be retrofitted with Spice Drawer Cabinet drawers

12" DEEP	A	NUMBER OF OPENINGS
SC30	30"	5
SC36	36"	6
SC42	42"	7

Wine Rack Cabinet

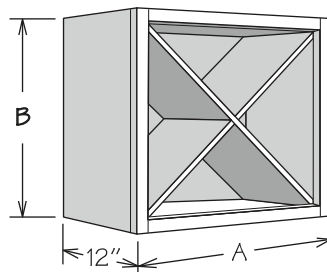


- Features Matching Interior standard
- Wine bottle opening is 4" x 4"
- Cabinet must be installed between two adjacent cabinets, one cabinet and a wall, or secured to a cabinet directly above or below

APC
FE
PE

12" DEEP	A	B	NUMBER OF BOTTLES
18"H			
WRC3018	30"	18½"	11
15"H			
WRC3015	30"	15½"	10
WRC3615	36"	15½"	13

Wine Storage Cabinet

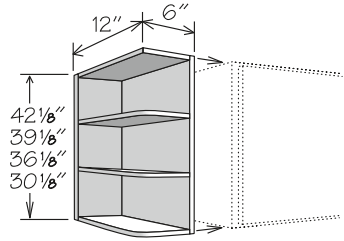


- Features Matching Interior standard
- All door styles feature ¾" plywood partitions
- Accent molding recommended – order separately
- Cabinet must be installed between two adjacent cabinets, one cabinet and a wall, or secured to a cabinet directly above or below

APC
FE
PE

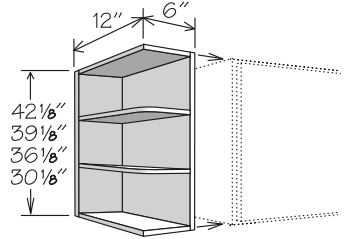
12" DEEP	A	B	NUMBER OF BOTTLES
24"H			
WSC2424	24"	24½"	30
18"H			
WSC1818	18"	18½"	12

Shelf End Wall



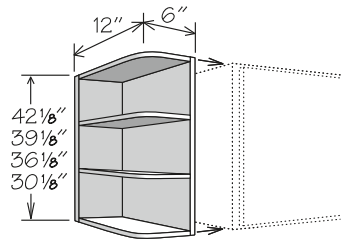
SQUARE TOP, ROUND BOTTOM (SQT)

30" High Shown



SQUARE TOP & BOTTOM (SQTb)

30" High Shown



ROUND TOP & BOTTOM (SEW)

30" High Shown

- Interior finished to match cabinet box exterior
- Features 1/2" veneered engineered wood back and side
- Top, bottom, and shelves are 3/4" veneered engineered wood
- Rounded shelves feature a 3" radius
- 1/8" screw recommended from inside of adjacent cabinet for installation
- Rounded bottom on SEW_ SQT does not allow cabinet to be reversed in the field or installation of bottom molding

12" DEEP

42"H • 3 Shelves

SEW42L SQT
SEW42R SQT
SEW42 SQTb
SEW42

39"H • 3 Shelves

SEW39L SQT
SEW39R SQT
SEW39 SQTb
SEW39

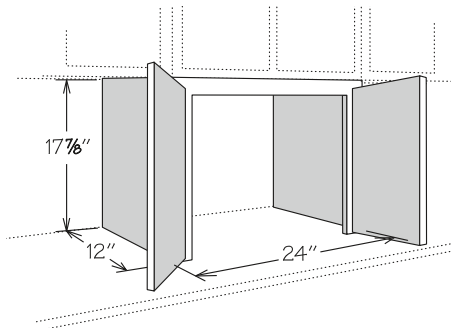
36"H • 2 Shelves

SEW36L SQT
SEW36R SQT
SEW36 SQTb
SEW36

30"H • 2 Shelves

SEW30L SQT
SEW30R SQT
SEW30 SQTb
SEW30

Straight Appliance Garage



- Installs below minimum 24" wide wall cabinet
- 20 3/4" wide x 15 5/16" high opening
- Shipped with end panels unattached
- No bottom rail

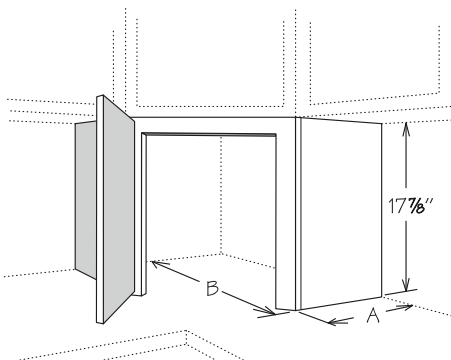
APC
FE
ID
MI ■
RD
VDO ■

12" DEEP

AGSD24 BUTT ■

AGSD24 BUTT SD

Corner Appliance Garage



- Installs below CW and CWS Corner Wall cabinets
- 11 3/4" wide x 15 5/16" high opening
- Shipped with end panels unattached
- No bottom rail

APC
FE
ID
MI ■
VDO ■

12" DEEP

AGD2418 ■

AGD2418 SD

A

12"

B

24"

15" DEEP

AGD2718 ■

AGD2718 SD

A

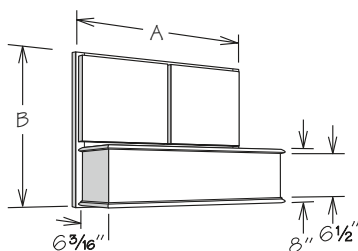
15"

B

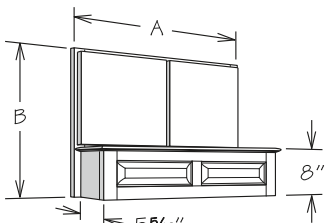
27"

27"

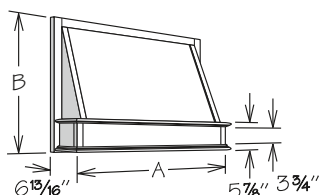
Wall Range Hood



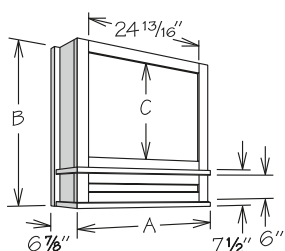
STRAIGHT VALANCE



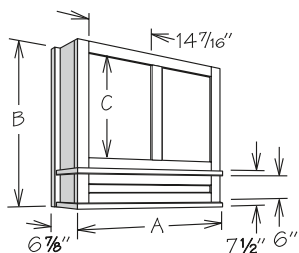
RAISED PANEL



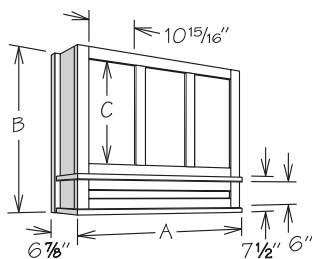
CLASSIC TAPERED



DECORATIVE MANTLE, 1 PANEL



DECORATIVE MANTLE, 2 PANEL



DECORATIVE MANTLE, 3 PANEL

- Must be installed between two wall cabinets
- Silver metallic liner included
- Order range hood blower separately - not for use with RHVENT 960
- All finished surfaces will match cabinet box exterior - glazed finishes will be glazed
- Straight Valance and Raised Panel Range Hoods feature:
 - » Center stile and functioning BUTT doors allow for duct work installation and wiring
 - » Doors will match door style ordered
 - » For Duraform door styles, only the doors will be wrapped

	A	B	C	DOORS
Straight Valance				
WRH3024 SV	30"	24"	-	(2) DR1515 BUTT
WRH3624 SV	36"	24"	-	(2) DR1815 BUTT
WRH3027 SV	30"	27"	-	(2) DR1518 BUTT
WRH3627 SV	36"	27"	-	(2) DR1818 BUTT
WRH3030 SV	30"	30"	-	(2) DR1521 BUTT
WRH3630 SV	36"	30"	-	(2) DR1821 BUTT
Raised Panel				
WRH3024 RP	30"	24"	-	(2) DR1515 BUTT
WRH3624 RP	36"	24"	-	(2) DR1815 BUTT
WRH3027 RP	30"	27"	-	(2) DR1518 BUTT
WRH3627 RP	36"	27"	-	(2) DR1818 BUTT
WRH3030 RP	30"	30"	-	(2) DR1521 BUTT
WRH3630 RP	36"	30"	-	(2) DR1821 BUTT
Classic Tapered				
WRH3024 CT	30"	24"	-	-
WRH3624 CT	36"	24"	-	-
Decorative Mantle - 1 Panel				
WRH3024 DM	30"	24"	12 5/16"	-
WRH3030 DM	30"	30"	18 5/16"	-
WRH3036 DM	30"	36"	24 5/16"	-
Decorative Mantle - 2 Panel				
WRH3624 DM	36"	24"	12 5/16"	-
WRH3630 DM	36"	30"	18 5/16"	-
WRH3636 DM	36"	36"	24 5/16"	-
Decorative Mantle - 3 Panel				
WRH4236 DM	42"	36"	24 5/16"	-

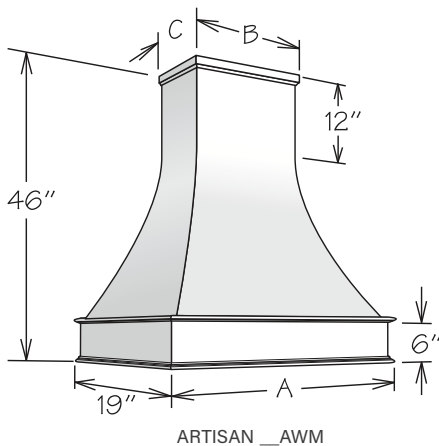
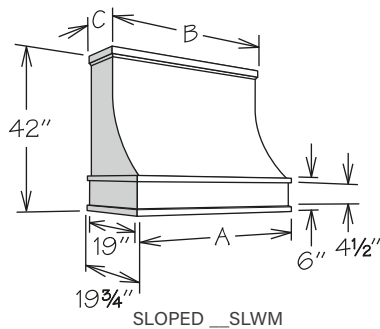
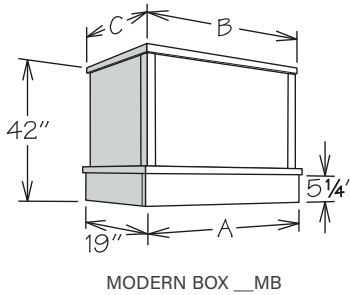
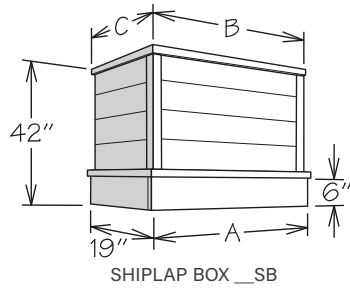
Range Hood • Integrated Chimney

NEW!

UPDATE

NEW!

NOMENCLATURE



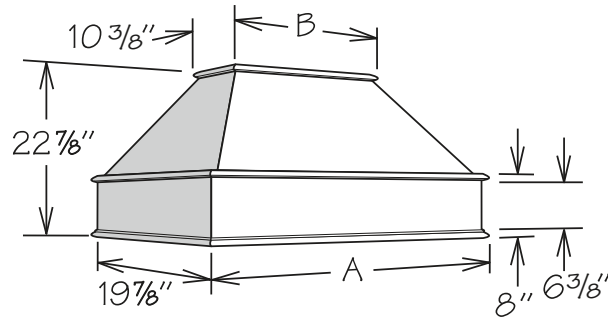
- **UPDATE:** Artisan and Sloped range hoods now include a piece of Classic Trim Molding (CLTM8) to field trim and install at the top of hood
- All door styles are finished to match cabinet box exterior - glazed finishes will be glazed
- Wall mounted installation only
- Silver metallic liner included - liner specific to range hood and blower ordered
 - » If no blower is ordered, RHLINER_S will be included
- Order range hood blower separately
- Siplap and Modern Range Hoods are field trimmable in height to 24"
- Sloped Range Hoods are field trimmable in height to 30"
- Artisan Hoods are field trimmable in height to 34"
- RH_ SB and RH_ MB include field installed corner molding and removable top molding
- Features a french cleat install system which requires 1" gap between hood and ceiling - use included molding to cover the gap
- Not recommended for use with Recirculating Blowers (RHVENT 260R & RHVENT 400R)

	A	B*	C**
Siplap Box			
RH3642 SB	36"	37 1/2"	19 3/4"
RH4242 SB	42"	43 1/2"	19 3/4"
RH4842 SB	48"	49 1/2"	19 3/4"
Modern Box			
RH3642 MB	36"	37 1/2"	19 3/4"
RH4242 MB	42"	43 1/2"	19 3/4"
RH4842 MB	48"	49 1/2"	19 3/4"
Sloped			
RH3642 SLWM	37 9/16"	36"	10 7/8"
RH4242 SLWM	43 9/16"	42"	10 7/8"
Artisan			
RH3646 AWM	38 5/16"	18 1/2"	10 1/4"
RH4246 AWM	44 5/16"	24 1/2"	10 1/4"

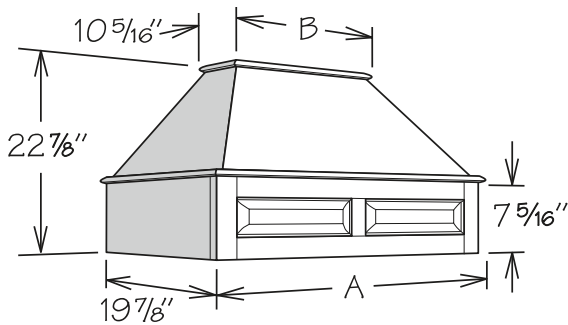
*Includes 3/4" thick molding installed on both sides of hood - subtract 1 1/2" for dimension without molding

**Includes 3/4" thick molding installed on front of hood - subtract 3/4" for dimension without molding

Range Hood



STRAIGHT VALANCE

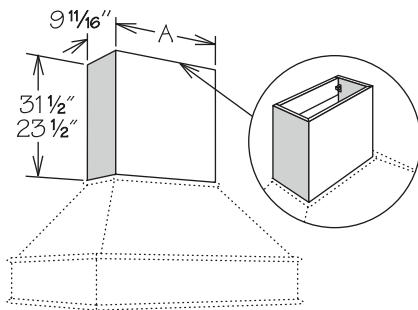


RAISED PANEL

- All door styles are finished to match cabinet box exterior - glazed finishes will be glazed
- Wall mounted installation only
- Order range hood blower separately
- Silver metallic liner included - liner is specific to range hood and blower ordered
 - » If no blower is ordered, RHLINER_S will be included
- May be accessorized with Range Hood Chimney - order separately

	A	B
Straight Valance		
RH3624 SV	$37 \frac{3}{4}"$	$18 \frac{3}{4}"$
RH4224 SV	$43 \frac{3}{4}"$	$24 \frac{3}{4}"$
RH4824 SV	$49 \frac{3}{4}"$	$30 \frac{3}{4}"$
Raised Panel		
RH3624 RP	$37 \frac{3}{4}"$	$18 \frac{3}{4}"$
RH4224 RP	$43 \frac{3}{4}"$	$24 \frac{3}{4}"$
RH4824 RP	$49 \frac{3}{4}"$	$30 \frac{3}{4}"$

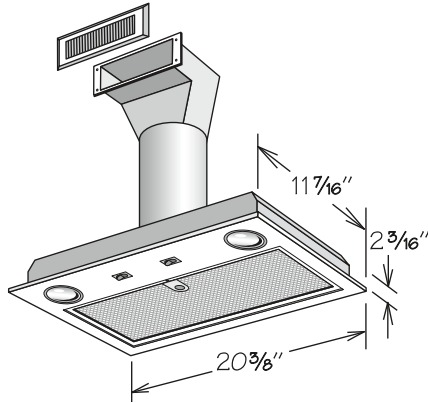
Range Hood Chimney



- Field trimmable in height
- All door styles feature $\frac{3}{4}"$ solid wood finished to match cabinet box exterior
- Features two chimney mounting blocks with metal fasteners
- For use with Straight Valance or Raised Panel Range Hoods

23 1/2" HIGH	31 1/2" HIGH	A
RHC3623	RHC3631	$17 \frac{3}{8}"$
RHC4223	RHC4231	$23 \frac{3}{8}"$
RHC4823	RHC4831	$29 \frac{3}{8}"$

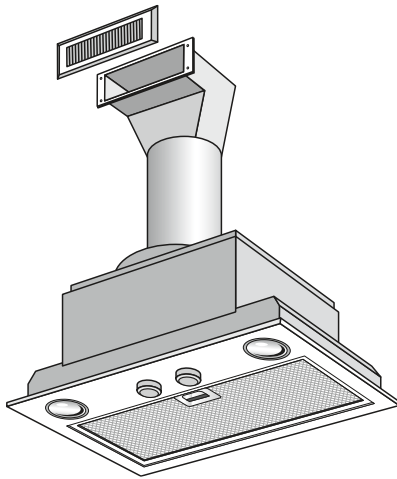
Range Hood Blower ■ 260 CFM Recirculating



- Designed for recirculating installation where exhaust is vented back into kitchen
- Recommended for use in spaces with soffit or bulkheads
- Not recommended for use with Integrated Chimney Range Hoods
- Includes duct work, metal grille and clips -- field assembly required
- Stainless steel finish
- 2-speed fan provides 260 CFM on high
- Sound level of 7 sones on high
- Features quick-release dishwasher safe aluminum mesh filter
- Includes two 2.8W bright LED lights
- Metal grille measures 11 1/4" x 5 5/16"
- 10" x 3" cutout required for metal grille
- Installation and care instructions included
- Liner not included

RHVENT 260R

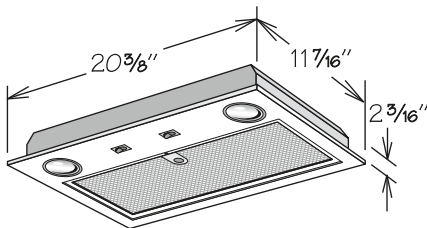
Range Hood Blower ■ 400 CFM Recirculating



- Designed for recirculating installation where exhaust is vented back into kitchen
- Recommended for use in spaces with soffit or bulkheads
- Not recommended for use with Integrated Chimney Range Hoods
- Includes duct work, metal grille and clips -- field assembly required
- Stainless steel finish
- Energy Star rated
- Features 3-speed rotary switch
- Fan provides 400 CFM on high
- Sound level of 6 sones on high
- Features quick-release dishwasher safe aluminum mesh filter
- Includes two 2.8W bright LED lights
- Unit has master on-off switch and heat sentry will automatically turn unit on when excessive heat is detected
- Metal grille measures 11 1/4" x 5 5/16"
- 10" x 3" cutout required for metal grille
- Installation and care instructions included
- Liner not included

RHVENT 400R

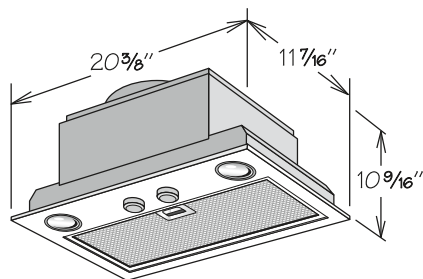
Range Hood Blower ■ 260 CFM Vented



- Designed for vented installation where exhaust is vented to exterior of home
- Stainless steel finish
- Requires 7" round duct for venting to exterior (not included)
- 2-speed fan provides 260 CFM on high
- Sound level of 7 sones on high
- Features quick-release dishwasher safe aluminum mesh filter
- Includes two 2.8W bright LED lights
- Installation and care instructions included
- Liner not included

RHVENT 260

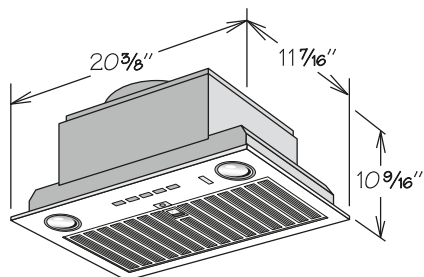
Range Hood Blower ▪ 400 CFM Vented



- Designed for vented installation where exhaust is vented to exterior of home
- Stainless steel finish
- Energy Star rated
- Features 3-speed rotary switch
- Fan provides 400 CFM on high with rectangular duct and 390 CFM on high with round duct
- Requires 6" vertical round or rectangular 3 1/4" x 10" duct for venting to exterior (not included)
- Sound level of 6 sones on high
- Features quick-release dishwasher safe aluminum mesh filter
- Includes two 2.8W bright LED lights
- Unit has master on-off switch and heat sentry will automatically turn unit on when excessive heat is detected
- Installation and care instructions included
- Liner not included

RHVENT 400

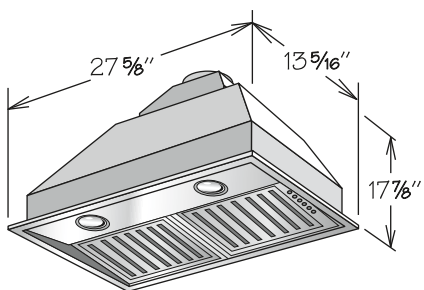
Range Hood Blower ▪ 600 CFM Vented



- Designed for vented installation where exhaust is vented to exterior of home
- Stainless steel finish
- Features 4-speed back-lit Electronic Soft Touch controls
- Requires 8" round, 6" round or 3 1/4" x 10" venting to exterior (not included)
- Fan provides 600 CFM on high with round duct or 580 CFM on high with rectangular duct
- Sound level of 9.5 sones on high
- Features quick-release dishwasher safe baffle-style filter with clean filter reminder
- Includes two 3W bright LED lights with 3 lighting levels
- Unit has master on-off switch and heat sentry will automatically turn unit on when excessive heat is detected
- Auto-Sensing option sets CFM to correct level automatically
- Wifi enabled option allows for voice control
- Installation and care instructions included
- Liner not included

RHVENT 600

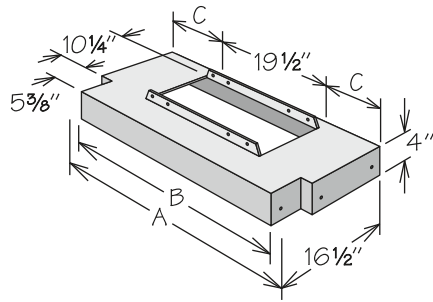
Range Hood Blower ▪ 960 CFM Vented



- Designed for vented installation where exhaust is vented to exterior of home
- Durable stainless steel with brushed finish
- Requires 7" round duct for venting to exterior (not included)
- Features a 4-speed push-button control to offer greater CFM flexibility; 960 CFM, 660 CFM, 480 CFM and 300 CFM
- Centrifugal blower provides 960 CFM air delivery and sound level of 5.1 sones on high
- Features quick-release dishwasher safe baffle-style filter
- Includes two 4-watt 12v MR16 LED bulbs - daylight
- 10 minute delay off timer
- Installation and care instructions included
- Not designed for use with the following:
 - » Straight Valance Wall Range Hoods
 - » Raised Panel Wall Range Hoods
 - » Classic Tapered Wall Range Hoods
 - » Decorative Mantle Wall Range Hoods
- Liner not included

RHVENT 960

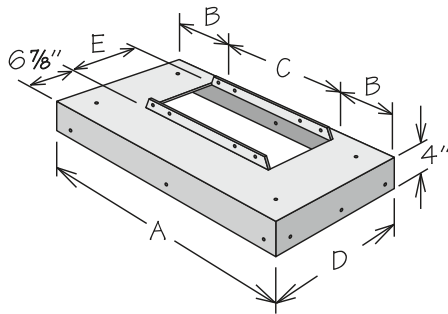
Tapered Hood Liner



- Liner is silver metallic powder coated metal
- For use with the following Wall Range Hoods:
 - » Straight Valance (WRH__SV)
 - » Raised Panel (WRH__RP)
 - » Classic Tapered (WRH__CT)
 - » Decorative Mantle (WRH__DM)
- One liner included with range hood

	A	B	C
RHLINER 30	29 ¹⁵ / ₁₆ "	26 ³ / ₁₆ "	5 ⁷ / ₃₂ "
RHLINER 36	35 ¹⁵ / ₁₆ "	32 ³ / ₁₆ "	8 ⁷ / ₃₂ "
RHLINER 42	41 ¹⁵ / ₁₆ "	38 ¹ / ₁₆ "	11 ⁷ / ₃₂ "

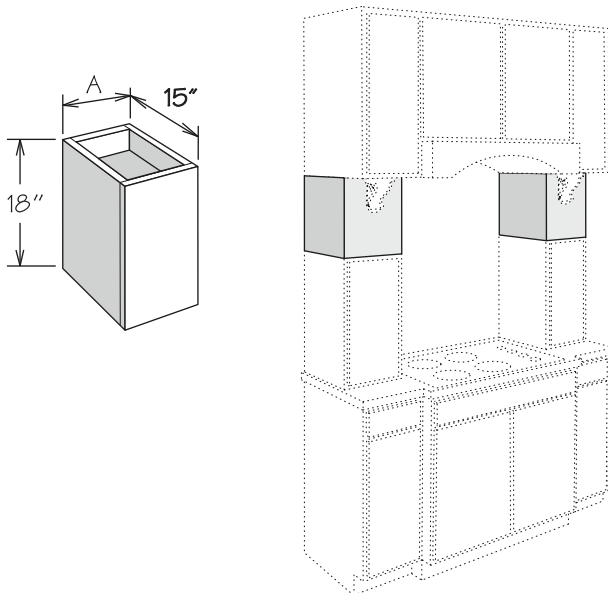
Straight Valance Hood Liner



- Liner finish is silver metallic powder-coated material
- For use with the following Range Hoods:
 - » Straight Valance (RH__SV)
 - » Raised Panel (RH__RP)
 - » Modern Box (RH__MB)
 - » Shiplap Box (RH__SB)
 - » Sloped (RH__SLWM)
 - » Artisan (RH__AWM)
- RHLINER _S SL1 must be used with RHVENT 960 blower
- RHLINER _S for use with all blowers except RHVENT 960
- One liner included with range hood (liner is specific to range hood and blower ordered)

	A	B	C	D	E
RHLINER 36S	34 ¹ / ₃₂ "	7 ⁷ / ₁₆ "	19 ¹ / ₂ "	18 ¹ / ₄ "	10 ¹ / ₄ "
RHLINER 42S	40 ¹ / ₃₂ "	10 ⁷ / ₁₆ "	19 ¹ / ₂ "	18 ¹ / ₄ "	10 ¹ / ₄ "
RHLINER 48S	46 ¹ / ₃₂ "	13 ⁷ / ₁₆ "	19 ¹ / ₂ "	18 ¹ / ₄ "	10 ¹ / ₄ "
RHLINER 36S SL1	34 ¹ / ₃₂ "	3 ³ / ₄ "	26 ¹³ / ₁₆ "	18 ³ / ₁₆ "	12 ⁷ / ₁₆ "
RHLINER 42S SL1	40 ¹ / ₃₂ "	6 ³ / ₄ "	26 ¹³ / ₁₆ "	18 ³ / ₁₆ "	12 ⁷ / ₁₆ "
RHLINER 48S SL1	46 ¹ / ₃₂ "	9 ³ / ₄ "	26 ¹³ / ₁₆ "	18 ³ / ₁₆ "	12 ⁷ / ₁₆ "

Plain Box Filler



- Veneered engineered wood
- Features 1/4" reveal
- Trimmable in height to 14 1/8" tall
- Reversible for left or right installation

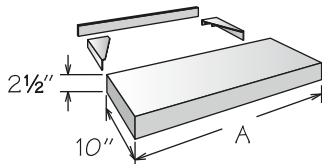
15" DEEP

WPB91815
WPB121815

A

9"
12"

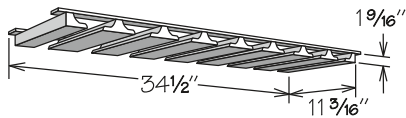
Floating Shelf



- Not trimmable
- Finished on all sides to match cabinet box exterior
- Features veneered engineered wood top and bottom and solid wood front and sides
- When installed between two cabinets, Furniture Ends (FE) is recommended for adjacent cabinets
- Must be secured to studs in wall
- Installation instructions, mounting brackets and screws included

10" DEEP	A	MAX. LOAD
FLSH2410	24"	30 lbs.
FLSH3010	30"	37 lbs.
FLSH3610	36"	45 lbs.
FLSH4210	42"	52 lbs.
FLSH4810	48"	60 lbs.

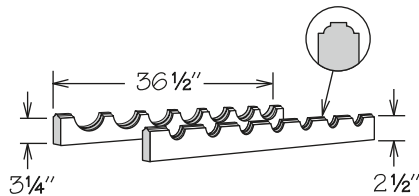
Stem Glass Holder



- Field trimmable to install below 18", 24", 30", or 36" wide wall cabinet
- All door styles feature solid wood finished to match cabinet box exterior
- Maximum stem glass base is 3/2" in diameter
- Not sized to fit modified depth cabinets

SGH36U

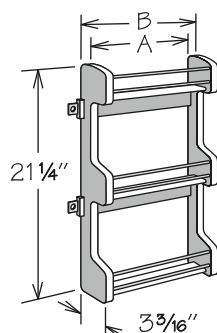
Wine Rack



- Accommodates seven bottles
- Field trimmable to 24" (five bottles) or 30" (six bottles)
- All door styles feature solid wood finished to match cabinet box exterior

WR36

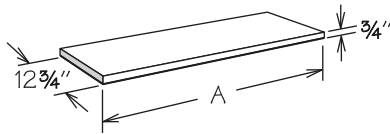
Spice Rack Kit



- Field installation accessory
- For wall cabinets 30" or higher
- Position cabinet adjustable shelves prior to installation
- Natural finish solid wood with chrome rails
- Three fixed shelves
- SRK15 mounts to 15" wide door
- SRK18 mounts to 18" wide door
- SRK21 mounts to 21" wide door

	A	B
SRK15	9 1/2"	10 1/2"
SRK18	12 1/2"	13 1/2"
SRK21	15 1/2"	16 1/2"

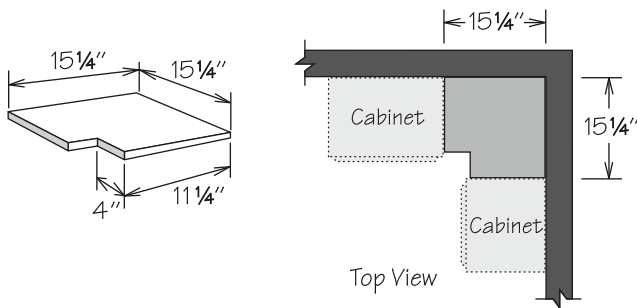
Finished Shelf



- Standard finished shelves feature veneered engineered wood, edge banded on all sides with top and bottom finished to match cabinet box exterior
- Textured finished shelves feature engineered wood, edge banded on all sides with top and bottom textured-wrapped to match cabinet door – available for Breeze and Drift finishes only
- Field trimmable

STANDARD	TEXTURED	A
FS4812	FS4812 DT	48 1/4"
FS6012	FS6012 DT	60 1/4"
FS7212	FS7212 DT	72 1/4"

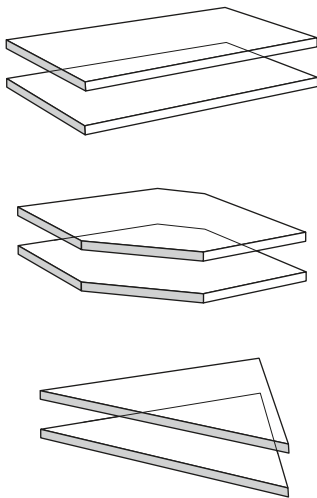
Blind Corner Closure



- Features 1/2" engineered wood finished with natural woodgrain finish both sides
- Field trimmable

BLC1515

Glass Shelf Kit



- Glass Shelf Kit includes two 1/4" high-strength tempered glass shelves
- Can be used with existing shelf rests or order SHELF REST MFD PK separately
- Refer to individual SKU box for number of shelves required and/or available
- GSK12 – GSK36 is 10 1/4" deep
- GSK12-15 – GSK36-15 is 13 1/4" deep
- Tempered glass cannot be field trimmed
- Glass Shelf Kits 12" - 24" wide have a 15 lb. per square foot load rating
- Glass Shelf Kits 27" - 36" wide have a 5 lb. per square foot load rating

12" DEEP

GSK12
GSK15
GSK18
GSK21
GSK24
GSK27
GSK30
GSK33
GSK36
GSKCW24
GSKWEA12

15" DEEP

GSK12-15
GSK15-15
GSK18-15
GSK21-15
GSK24-15
GSK27-15
GSK30-15
GSK33-15
GSK36-15
GSKCW27