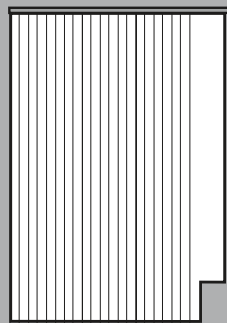
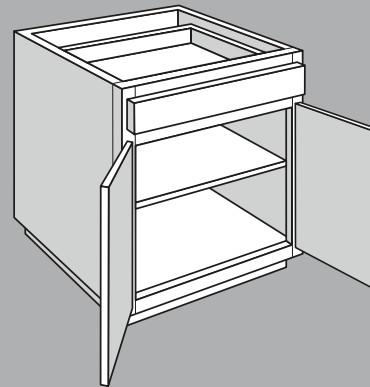
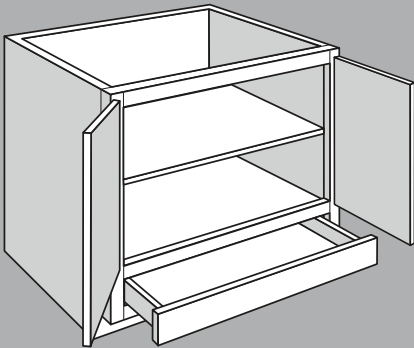
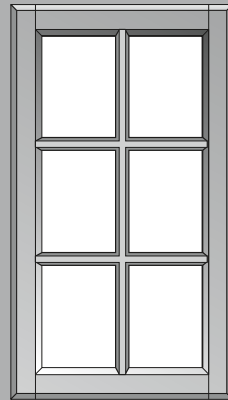
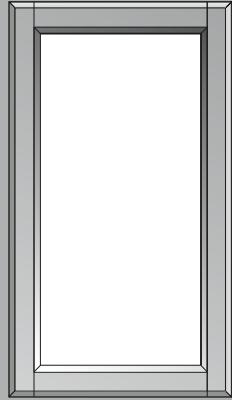


# Construction Options



23 21 19 17 15 13 11 9 7 5  
24 22 20 18 16 14 12 10 8 6 4"

# Construction Options Legend

Icons used in this guide are shown below and indicate which construction options are available for a particular product.

<b>AH</b>	Accessible Height Option
<b>APC</b>	All Plywood Construction Option
<b>CFO</b>	Cabinet Front Only Option
<b>EMF</b>	Express Manufacturing Fee
<b>FE</b>	Furniture Ends Option
<b>ID</b>	Increased Depth Option
<b>IF</b>	Inverted Frame Option
<b>MI</b>	Matching Interior Option
<b>PE</b>	Plywood Ends Option
<b>RD</b>	Reduced Depth Option
<b>RTK</b>	Recessed Toe Kick Option
<b>VDO</b>	Void Door Option
<b>VTD</b>	Void Top Drawer Option
<b>VTK</b>	Void Toe Kick Option

NEW!

OPTION

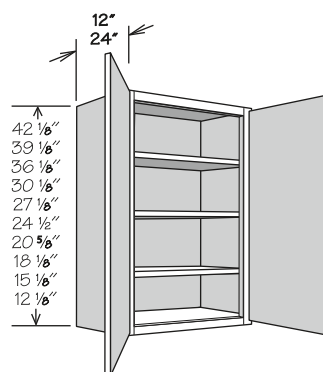
## Example:

When a square ■ or diamond ♦ symbol is in an option box, it indicates that the construction option is ONLY available for SKUs listed with that symbol.

All options without a symbol are available for all SKUs.

In this example, the ♦ diamond indicates that only W3015 BUTT and W3015 BUTT SD are available with Increased Depth (ID), while the ■ square indicates that only the non-SD cabinets are available with Matching Interior (MI) and Void Door (VDO) options.

## Wall Cabinets - 2 Butt Doors



CFO
FE
ID ♦
MI ■
PE
RD
VDO ■

### 12" DEEP

W3015 BUTT ■ ♦  
W3015 BUTT SD ♦

### 24" DEEP

W3015 X 24DP BUTT ■  
W3015 X 24DP BUTT SD

# Premium & Glaze Premium Finish Cabinet Option

Our Premium and Glaze Premium finishes accentuate the detailing and textures of the cabinetry.

- Premium finishes feature paints that emphasize lines and rich detail with an inviting texture
- Glaze Premium finishes feature a painted base, with an added glaze that settles into the recesses, corners, and grooves to add definition and a distinctive patina

Premium Glaze Finish	Base Finish Details	Glaze Details	Available Collections
<b>Painted Biscotti Glaze</b>	Painted Vanilla	Neutral Brown Glaze	Edgeworth, Edgeworth w/ DFO, Glasson, Glasson w/ DFO, Irvington, Irvington w/ DFO, McKinley, Stemson, Stemson w/ DFO, Warren and Warren w/ DFO
<b>Painted Ember Glaze</b>	Painted Harbor	Warm Brown Gray	Edgeworth, Edgeworth w/ DFO, Glasson, Glasson w/ DFO, Irvington, Irvington w/ DFO, McKinley, Stemson, Stemson w/ DFO, Warren and Warren w/ DFO
<b>Painted Pewter Glaze</b>	Painted Linen	Dark Gray	Edgeworth, Edgeworth w/ DFO, Glasson, Glasson w/ DFO, Irvington, Irvington w/ DFO, McKinley, Stemson, Stemson w/ DFO, Warren and Warren w/ DFO

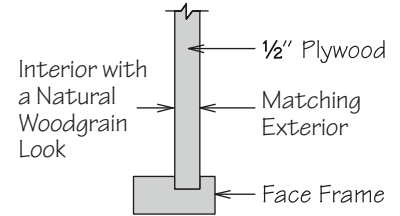
Premium Finish	Finish Details	Available Collections
<b>Painted Black</b>	Black Paint	Breckenridge, Breckenridge w/ DFO, Edgeworth, Edgeworth w/ DFO, Glasson, Glasson w/ DFO, Irvington, Irvington w/ DFO, Sydney, McKinley, Mission, Mission w/ DFO, Southall, Southall w/ DFO, Stemson, Stemson w/ DFO, Warren and Warren w/ DFO
<b>Painted Boulder</b>	Dark Gray Paint	Breckenridge, Breckenridge w/ DFO, Edgeworth, Edgeworth w/ DFO, Glasson, Glasson w/ DFO, Irvington, Irvington w/ DFO, Sydney, McKinley, Mission, Mission w/ DFO, Southall, Southall w/ DFO, Stemson, Stemson w/ DFO, Warren and Warren w/ DFO
<b>Painted Harbor</b>	Soft Warm Gray Paint	Breckenridge, Breckenridge w/ DFO, Edgeworth, Edgeworth w/ DFO, Glasson, Glasson w/ DFO, Irvington, Irvington w/ DFO, Sydney, McKinley, Mission, Mission w/ DFO, Southall, Southall w/ DFO, Stemson, Stemson w/ DFO, Warren and Warren w/ DFO
<b>Painted Linen</b>	Soft White Paint	Breckenridge, Breckenridge w/ DFO, Edgeworth, Edgeworth w/ DFO, Glasson, Glasson w/ DFO, Irvington, Irvington w/ DFO, Sydney, McKinley, Mission, Mission w/ DFO, Southall, Southall w/ DFO, Stemson, Stemson w/ DFO, Warren and Warren w/ DFO
<b>Painted Mist</b>	Light Blue Paint	Breckenridge, Breckenridge w/ DFO, Glasson, Glasson w/ DFO, Edgeworth, Edgeworth w/ DFO, Irvington, Irvington w/ DFO, McKinley, Mission, Mission w/ DFO, Southall, Southall w/ DFO, Stemson, Stemson w/ DFO, Sydney, Warren and Warren w/ DFO
<b>Painted Navy</b>	Dark Blue Paint	Breckenridge, Breckenridge w/ DFO, Edgeworth, Edgeworth w/ DFO, Glasson, Glasson w/ DFO, Irvington, Irvington w/ DFO, Sydney, McKinley, Mission, Mission w/ DFO, Southall, Southall w/ DFO, Stemson, Stemson w/ DFO, Warren and Warren w/ DFO
<b>Painted Oat</b>	Gentle Taupe Paint	Breckenridge, Breckenridge w/ DFO, Edgeworth, Edgeworth w/ DFO, Glasson, Glasson w/ DFO, Irvington, Irvington w/ DFO, Sydney, McKinley, Mission, Mission w/ DFO, Southall, Southall w/ DFO, Stemson, Stemson w/ DFO, Warren and Warren w/ DFO
<b>Painted Sage</b>	Cool Dark Green Paint	Breckenridge, Breckenridge w/ DFO, Edgeworth, Edgeworth w/ DFO, Glasson, Glasson w/ DFO, Irvington, Irvington w/ DFO, Sydney, McKinley, Mission, Mission w/ DFO, Southall, Southall w/ DFO, Stemson, Stemson w/ DFO, Warren and Warren w/ DFO
<b>Painted Stone</b>	Medium Cool Gray Paint	Breckenridge, Breckenridge w/ DFO, Edgeworth, Edgeworth w/ DFO, Glasson, Glasson w/ DFO, Irvington, Irvington w/ DFO, Sydney, McKinley, Mission, Mission w/ DFO, Southall, Southall w/ DFO, Stemson, Stemson w/ DFO, Warren and Warren w/ DFO
<b>Painted Vanilla</b>	Warm Soft White Paint	Breckenridge, Breckenridge w/ DFO, Edgeworth, Edgeworth w/ DFO, Glasson, Glasson w/ DFO, Irvington, Irvington w/ DFO, Sydney, McKinley, Mission, Mission w/ DFO, Southall, Southall w/ DFO, Stemson, Stemson w/ DFO, Warren and Warren w/ DFO

## All Plywood Construction Option

**APC**

All Plywood Construction Option includes:

- ½" plywood sides, floors and cabinet tops
- ¾" plywood shelves with edge banding
- ⅝" plywood captured back
- ½" plywood inset toe kick
- ½" plywood corner blocks (excluding BEA/BPP/BPPUS/BTDP cabinets or cabinets with a solid top)



### Notes:

- Exterior sides finished to match specific cabinet box exterior.
- Plywood will be visible from top and bottom of side panels.
- Available for individual cabinets or entire kitchen.
- All door styles feature standard interior sides with a natural woodgrain look and matching exterior sides.
- May be combined with all construction options excluding Cabinet Front Only and Plywood Ends.
- Toe kick support blocks are not plywood.
- Roll-Out accessories and drawer inserts will not feature All Plywood Construction.
- All Plywood Construction refers to the cabinet box components and shelving as detailed above (certain parts and accessories are not available with this construction option).
- Plywood can consist of a combination of veneer and medium density fiberboard (MDF) layers to achieve superior product stability and finish quality. Plywood components meet the ANSI/HPVA hardwood and decorative plywood standards ([www.decorativehardwoods.org](http://www.decorativehardwoods.org)).

## Plywood Ends Option

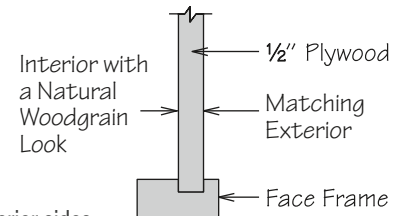
**PE**

Plywood Ends Option includes:

- ½" plywood cabinet sides

### Notes:

- Exterior sides finished to match cabinet box exterior.
- Plywood will be visible from top and bottom of side panels.
- Available for individual cabinets or entire kitchen.
- All door styles feature standard interior sides with a natural woodgrain look and matching exterior sides.
- May be combined with all construction options excluding Cabinet Front Only, All Plywood Construction and Furniture Ends.
- Plywood Ends refers to the cabinet box side panels as detailed above (certain parts and accessories are not available with this construction option).
- Plywood can consist of a combination of veneer and medium density fiberboard (MDF) layers to achieve superior product stability and finish quality. Plywood components meet the ANSI/HPVA hardwood and decorative plywood standards ([www.decorativehardwoods.org](http://www.decorativehardwoods.org)).



	Standard Construction	Plywood Ends Option (PE)	All Plywood Construction Option (APC)
<b>Cabinet Sides</b>	½" Engineered Wood	½" Plywood	½" Plywood
<b>Cabinet Floor</b>	½" Engineered Wood	½" Engineered Wood	½" Plywood
<b>Cabinet Top (Wall Cabinets Only)</b>	½" Engineered Wood	½" Engineered Wood	½" Plywood
<b>Cabinet Back</b>	⅝" Hardboard Substrate captured	⅝" Hardboard Substrate captured	⅝" Plywood captured
<b>Inset Toe Kick</b>	½" Engineered Wood	½" Engineered Wood	½" Plywood
<b>Corner Blocks</b>	½" Engineered Wood	½" Engineered Wood	½" Plywood* <small>*see APC option box for list of exclusions</small>
<b>Shelves</b>	¾" Engineered Wood with Edge Banding	¾" Engineered Wood with Edge Banding	¾" Plywood with Edge Banding
<b>Wall Cabinet Hanging Rails</b>	½" Engineered Wood Top and Bottom Rails	½" Engineered Wood Top and Bottom Rails	½" Plywood Top and Bottom Rails
<b>Base Cabinet Hanging Rails</b>	¾" Hardwood Top Rail ½" Engineered Wood Bottom Rail	¾" Hardwood Top Rail ½" Engineered Wood Bottom Rail	¾" Hardwood Top Rail ½" Plywood Bottom Rail

## Furniture Ends Option

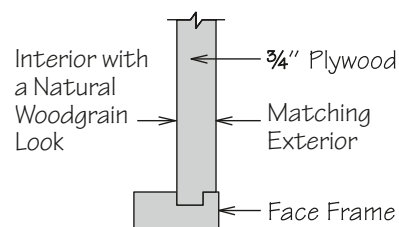
FE

Furniture Ends Option includes:

- ¾" plywood cabinet sides

### Notes:

- Exterior sides feature plywood finished to match specific cabinet box exterior.
- Plywood will be visible from top and bottom of side panels.
- All door styles feature standard interior sides with a natural woodgrain look and matching exterior sides.
- Available on individual cabinets except Base End Angle (BEA24 FH) and Wall End Angle (WEA12) cabinets.
- Both side panels convert to ¾" plywood sides except Base End Angle (BEA12 FH) cabinet which converts the 12" side panel only.
- May be combined with all construction options excluding Cabinet Front Only and Plywood Ends.
- End panels are not required for installation of Decorator Matching Doors or the exposed ends of cabinets with the Furniture Ends Option.
- Cabinet Angle Molding (CAM8) cannot be used with cabinets with the Furniture Ends Option.
- Sink Front Return (SFR R/L) with the Furniture Ends Option will include a rabbeted front edge.
- A seam will be visible between stacked cabinets and on 93" and 96" Tall cabinets between the toe kick box and the cabinet.  
Use decorative molding to conceal this seam.
  - » Use decorative molding (e.g., Batten Molding or Ogee Pilaster Molding).
  - » Use a Column Filler or Wood Tall End Panel.
- Plywood can consist of a combination of veneer and MDF layers to achieve superior product stability and finish quality. Plywood components meet the ANSI/HPVA hardwood and decorative plywood standards ([www.decorativehardwoodsassociation.org](http://www.decorativehardwoodsassociation.org)).



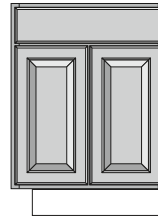
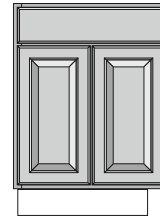
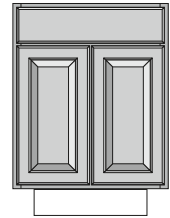
## Recessed Toe Kick Option

**RTK**

The Recessed Toe Kick Option is available on most Base, Desk and Vanity base cabinetry. When the Recessed Toe Kick Option is selected, left, right or both must be specified.

### Notes:

- May be combined with all construction options excluding Accessible Height, Cabinet Front Only or the Reduced Depth Option when cabinets are reduced to 8" or less.
- Recommended for cabinets at the end of a run, especially in island and peninsula designs.
- Recessed side(s) are constructed of ½" thick unfinished plywood and are recessed 3½" to match front of cabinet.
- Recessed Toe Kick box is not flush on non-recessed side and back.
- Blind Corner Base cabinets (BLB\_) are only available with the Recessed Toe Kick Both Option (RTKB).
- Base End Angle (BEA\_FH), Base Pantry Pull-Out (BPP9), Base Pantry Pull-Out Utensil Storage (BPPUS9), Base Tray Divider Pull-Out (BTDP9), Tray Base (TB9) and (TB9 TDS), Base cabinets are not available with the Recessed Toe Kick Both Option (RTKB).
- Not available for Peninsula Base cabinets with the Reduced Depth Option of RD-11 and lower.
- For Peninsula Base cabinets, the working drawer side indicates the front of the cabinet in order to correctly select Recessed Toe Kick Right (RTKR) or Left (RTKL).
- Peninsula Base cabinets ordered with Recessed Toe Kick Option must be secured to the floor through the cabinet bottom into bracing secured to the floor.
- Base Toe Kick (BTK8) required for front and any exposed side(s).


**RTKL**

**RTKR**

**RTKB**

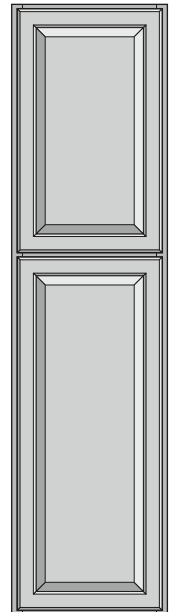
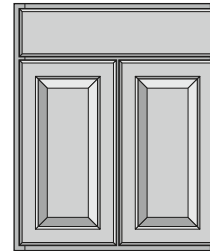
## Void Toe Kick Option

**NEW! OPTION**
**VTK**

The Void Toe Kick Option is available for most Base, Desk, Vanity, and Tall cabinets that feature a toe kick (excludes 93" and 96" high tall cabinets that ship toe kick assembly separately).

### Notes:

- This option removes the toe kick
- Both cabinet side panels need to be supported from the floor and the cabinet properly secured in position.
- Allows cabinet to be used with decorative feet or a decorative platform.
- Not intended to be used in a "floating cabinet" application.
- May be combined with all construction options excluding Accessible Height, Recessed Toe Kick or Cabinet Front Only Option
- Any cabinet part above toe kick (face frames, doors, internal cabinet accessories, etc.) will not be altered by this modification



## Accessible Height Option

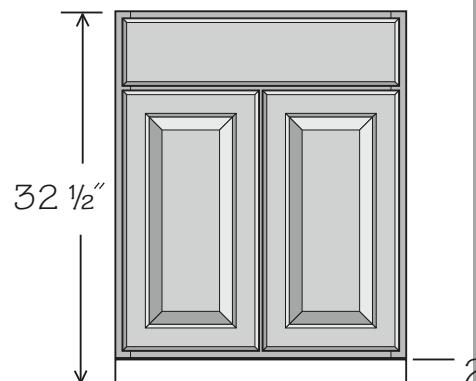
AH

The Accessible Height Option is available for most cabinets that feature a toe kick.

### Notes:

- This option reduces cabinet height by 2" off the toe kick area.
  - » Toe kick boxes that are shipped separately on 93" and 96" high tall cabinets will also be reduced by 2" with this option.
- May be combined with all construction options excluding Cabinet Front Only, Recessed Toe Kick or Void Toe Kick.
- Any cabinet part above toe kick (face frames, doors, internal cabinet accessories, etc.) will not be altered by this modification.

34 1/2" Base/Vanity	84" Tall	90" Tall	93" Tall	96" Tall
32 1/2"	82"	88"	91"	94"



CONSTRUCTION OPTIONS

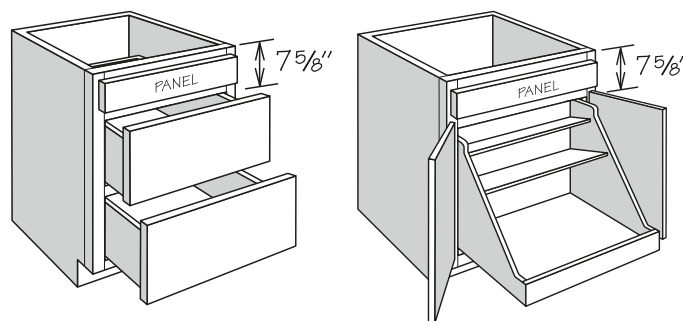
## Void Top Drawer Option

VTD

The Void Top Drawer Option is available for most 3 Drawer Base, 4 Drawer Base, Base with Deep Roll-Out Trays, Base with Pot & Pan Organizer and Peninsula Base cabinets.

### Notes:

- May be combined with all construction options excluding Cabinet Front Only and Inverted Frame.
- This option removes the drawer body and glide system and replaces it with a false panel on any top drawer(s).
- On cabinets with multiple top drawers, all top drawers will be voided.
- When used with a drop-in appliance, there is a height clearance of 7 5/8" from the top of the cabinet to the top of the door/drawer opening below the voided drawer.
- Subtract 1 1/2" from width and depth for available top opening - removal of corner blocks may be required.
- Removal of the top rail is not recommended.
- Refer to appliance manufacturer's specifications for adequate clearances and required installation materials.



## Void Door Option

**VDO**

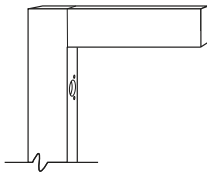
The Void Door Option is available for most wall cabinets. All void door cabinets ship without doors or hinges – center stiles and adjustable shelves will remain. Cabinet frames are pre-drilled for door hinges. All void door wall top hinge cabinets ship without door, lid stays and hinges.

Refer to the descriptions below to select the correct option for your layout:

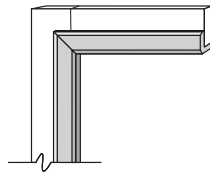
- VDO-DFH (Drilled For Hinges)
- VDO-SAM (Shaker Accent Molding)
- VDO-SBAM (Single Bead Accent Molding)

### Notes:

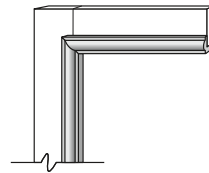
- May be combined with all construction options excluding Cabinet Front Only.
- Can be used to create decorative open cabinets.
- Decorative Accent Moldings will conceal hinge holes.
- Molding is to be cut and field installed at the job site.
- When matching interior is desired, the Matching Interior Option must be selected.



**VDO-DFH**  
Drilled For Hinges



**VDO-SAM**  
Shaker Accent Molding



**VDO-SBAM**  
Single Bead Accent Molding

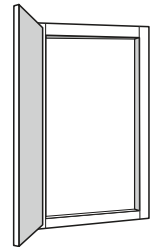
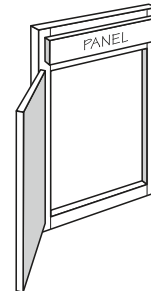
## Cabinet Front Only Option

**CFO**

The Cabinet Front Only Option is available for most cabinets with a frame.

### Notes:

- Cannot be combined with any construction option.
- This option consists of the cabinet front face frame, door(s), drawer front(s) and hinges.
- Toe kicks are not included.
- This option is only available for cabinets without accessories.



## Reduced Depth Option

RD

The Reduced Depth Option should be used when ordering less than standard depth cabinets. The Reduced Depth Option is available in 1" increments; minimum depth is 4". Vanity and Desk cabinets will reduce to standard Reduced Depth increments (i.e. Vanity cabinets with RD-20 will measure 20" in depth).

Orders specifying Reduced Depth Option must show the total cabinet depth.

Example: Cabinet: B24

Option: RD-17 (reduced to 17" deep)

### Notes:

- There is a potential tipping hazard for Reduced Depth Cabinets until they are mounted to a wall.
- Peninsula Base cabinets reduced to 11" or less will not have an inset toe kick.
- Adjustable shelves are reduced in 1" increments to match Reduced Depth Option selected on cabinet(s).
- Adding the Reduced Depth Option does not remove adjustable shelves (where applicable).
- May be combined with all construction options excluding Increased Depth, Cabinet Front Only or Recessed Toe Kick when cabinets are reduced to 8" or less.
- All cabinets reduced to 5" or less will not have an inset toe kick.
- Reduced depth restrictions:
  - » Cabinets that include Deep Roll-Out Trays (DROT) are only available with RD-23 through RD-12.
  - » 24" Deep Wall Top Hinge cabinets are only available with RD-23 through RD-8.
  - » 12" Deep Wall Top Hinge cabinets are only available with RD-11 through RD-8.
  - » Base End Angle (BEA12 FH) cabinets are only available with RD-23 through RD-18.
  - » Knee-hole Drawer cabinets are only available with RD-20 through RD-12.
  - » Two Drawer Base cabinets are only available with RD-23 through RD-21.
  - » 24" Deep Furniture Drawer cabinets are only available with RD-23 through RD-13.
- When ordering reduced depth accessories, specify the depth of the cabinet for which the accessory is intended (e.g., SK3624 RD-21 would be ordered for a UT3624 X 84 RD-21).

Reduced Depth	Drawer Depth Base & 24" Deep Desk Cabinets	Drawer Depth Vanity & 21" Deep Desk Cabinets	Deep Roll-Out Tray Depth
RD-23	18"	—	18"
RD-22	18"	—	18"
RD-21	18"	—	18"
RD-20	15"	15"	15"
RD-19	15"	15"	15"
RD-18	15"	15"	15"
RD-17	12"	12"	12"
RD-16	12"	12"	12"
RD-15	12"	12"	12"
RD-14	9 <sup>7</sup> / <sub>16</sub> "	9 <sup>7</sup> / <sub>16</sub> "	9"
RD-13	9 <sup>7</sup> / <sub>16</sub> "	9 <sup>7</sup> / <sub>16</sub> "	9"
RD-12	9 <sup>7</sup> / <sub>16</sub> "	9 <sup>7</sup> / <sub>16</sub> "	9"
RD-11 to RD-4	No Drawer	No Drawer	Not Available

## Increased Depth Option

ID

The Increased Depth Option is available for most Wall cabinets up to 36" wide and all Bookshelves. The Increased Depth Option is available in 1" increments; maximum depth is 24".

Orders specifying Increased Depth Option must show the total cabinet depth.

Example: Cabinet: W1530

Option: ID-14 (increased to 14" deep)

### Notes:

- May be combined with all construction options excluding Reduced Depth and Cabinet Front Only.
- Adjustable shelves are increased in 1" increments to match Increased Depth Option selected on cabinets.
- Wall cabinets and bookshelves increased up to and including 18" deep can be mounted using standard installation procedures.
- Wall cabinets and bookshelves increased to 19" deep and over must be stacked, floor mounted or installed over a refrigerator.
- All Increased Depth cabinets must be securely attached in one of the following combinations: to studs in back wall and both sides OR to studs in back wall, one side and top (e.g., two adjacent cabinets or one adjacent cabinet and a wall).

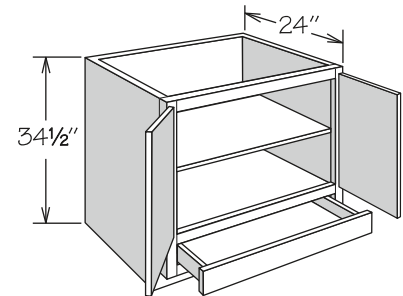
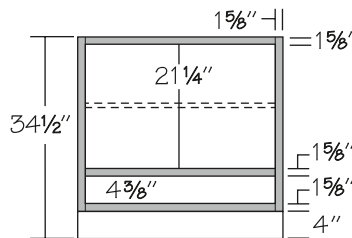
## Inverted Frame Option

IF

The Inverted Frame Option is available for most standard base cabinets and base cabinets with accessories.

### Notes:

- May be combined with all construction options excluding Cabinet Front Only and Void Top Drawer.
- Drawer(s) below full cabinet floor.
- Adjustable shelf is included.
- Back is not predrilled for Deep Roll-Out Trays (DROT's).



## Express Manufacturing Fee (Shenandoah PRO Only)

EMF

The Express Manufacturing Fee option is available for all cabinets and accessories ordered through the Shenandoah PRO line ONLY.

### Notes:

- 10-Day Build and Ship, Build and Ship lead times cited are based on normal supply chain conditions and may vary by location.
- Cabinets that include the EMF option will be charged an EMF fee.
- Refer to Designer Resources for more information on lead times and program details.

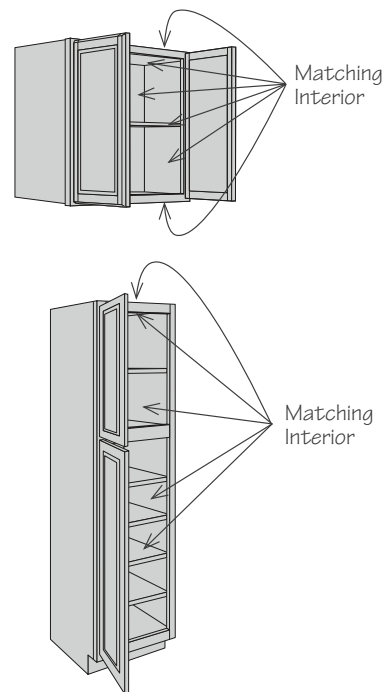
## Matching Interior Option

MI

The Matching Interior Cabinet Option is available for Wall cabinets (with exceptions noted below), Utility cabinets, Vanity Linen cabinets and Refrigerator Return Panels. This option matches the cabinet's interior, top and bottom to that of the cabinet box exterior. For textured-wrapped Duraform, refer to door style page for box finish.

### Notes:

- May be combined with all construction options excluding Cabinet Front Only.
- Not available for wall cabinets with a standard matching interior (including all Specialty Door cabinets).
- All Plywood Construction Option (APC), Furniture End Option (FE), or Plywood End Option (PE) is recommended when Matching Interior (MI) is selected.
- Standard construction cabinetry with the Matching Interior Option features two-sided engineered wood side panels finished to match cabinet box exterior.
- Cabinetry with the All Plywood Construction Option (APC), Furniture Ends Option (FE) or Plywood Ends Option (PE) features plywood side panels finished to match cabinet box exterior.
- Matching Interior cabinetry with the All Plywood Construction Option features  $\frac{3}{4}$ " plywood shelves finished to match cabinet box exterior.
- Recommended for cabinets with the Void Door Option (VDO).
- All finished surfaces of the Wall, Utility and Vanity Linen cabinets will be color matched including shelves, back, interior and exterior of returns, top and bottom.
- Surfaces that are not finished (including hanging rails, tops/bottoms of side panels, cabinet backs, etc.) will remain unfinished.
- Interior accessories in Matching Interior cabinets (i.e., Spice Rack Kit, Deep Roll-Out Trays, will remain natural finish.
- When Matching Interior (MI) is ordered for Breeze and Drift finishes, cabinet interior will match cabinet box exterior.



## Specialty Door Options

SD

Specialty Door cabinets are available for most Wall, Utility and Vanity Linen cabinet sizes. All Specialty Door cabinets include Matching Interior as standard and require one of the specialty door options below. Specialty Door options for Utility and Vanity Linen cabinets apply to top door(s) only.

### Open Frame Door (OFD) notes:

- Features door frame only with no mullions or center panel.
- Decorative Glass Inserts and appropriate glass clips are shipped separately from the cabinet for field installation - see pages 54–55 for available Glass Inserts.
- See pages 50–51 for door style profiles.

### Mullion Frame Door (MFD) notes:

- Features grid-style mullions.
- Not available for Wall Top Hinge cabinets.
- Decorative Glass Inserts and appropriate glass clips are shipped separately from the cabinet for field installation - see pages 54–55 for available Glass Inserts.
- See pages 52–53 for door style profiles.

## Specialty Door Availability by Size

Door Width	Cabinet Door Height									
	12" High Wall	15" High Wall	18" High Wall	21" High Wall	24" High Wall	27" High Wall	30" High Wall	36" High Wall	39" High Wall	42" High Wall
12" Wide	●	●	●		●		●	●	●	●
13" Wide	●	●	●		●		●	●	●	●
15" Wide	●	●	●	●	●	●	●	●	●	●
16" Wide	●	●	●	●	●		●	●	●	●
18" Wide	●	●	●	●	●		●	●	●	●
18 ½" Wide	●	●	●	●	●					
19" Wide	●	●	●	●	●		●	●		●
21" Wide	●	●	●		●		●	●	●	●
30" Wide		■	■							
36" Wide		■	■							

- Available with all Specialty Door Options
- Wall Top Hinge cabinets only - not available with MFD

## Specialty Door Availability by Door Style

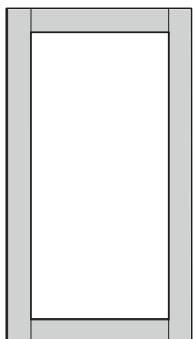
Door Style	OFD	MFD
Breckenridge	●	
Breckenridge w/ DFO	●	
Cardiff	●	
Edgeworth	●	●
Edgeworth w/ DFO	●	●
Glasson	●	
Glasson w/ DFO	●	
Irvington	●	●
Irvington w/ DFO	●	●
McKinley	●	●
Mission	●	
Mission w/ DFO	●	
Southall	●	
Southall w/ DFO	●	
Stemson	●	●
Stemson w/ DFO	●	●
Sydney	●	
Warren	●	
Warren w/ DFO	●	

# Open Frame Specialty Doors

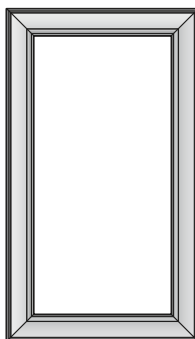
OFD

**Profile for:**

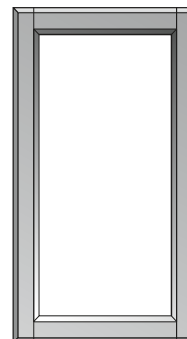
- Breckenridge
- Breckenridge w/ DFO

**Profile for:**

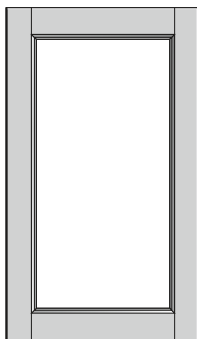
- Cardiff

**Profile for:**

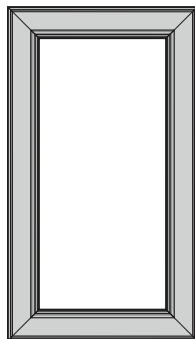
- Edgeworth
- Edgeworth w/ DFO

**Profile for:**

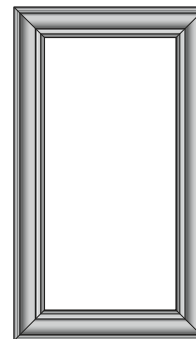
- Glasson
- Glasson w/ DFO

**Profile for:**

- Irvington
- Irvington w/ DFO

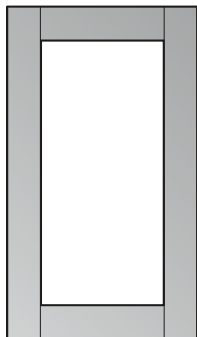
**Profile for:**

- McKinley



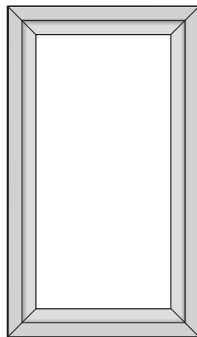
## Profile for:

- Mission
- Mission w/ DFO
- Sydney



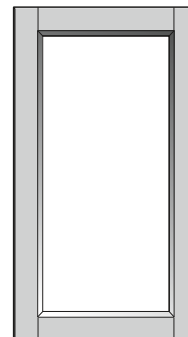
## Profile for:

- Southall
- Southall w/ DFO



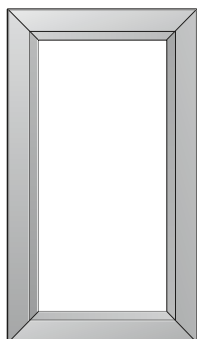
## Profile for:

- Stemson
- Stemson w/ DFO



## Profile for:

- Warren
- Warren w/ DFO

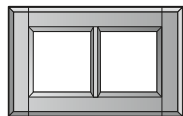


## Mullion Frame Specialty Doors

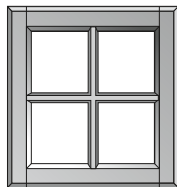
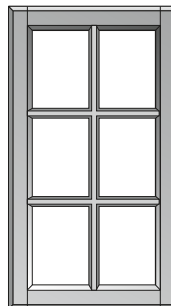
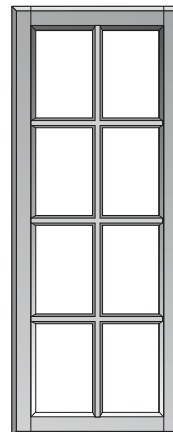
MFD

### Profile for:

- Edgeworth
- Edgeworth w/ DFO

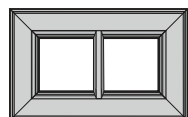


12" High Wall Cabinet

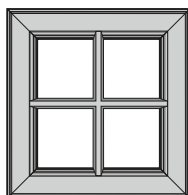
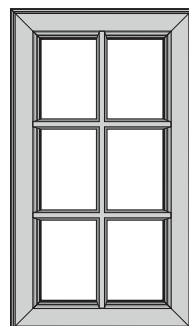
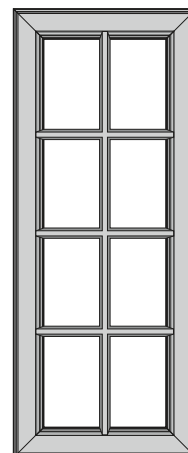
15", 18", 21", 24" or 27"  
High Wall Cabinet30" or 36" High Wall Cabinet  
84" or 90" High Utility Cabinet  
84" High Vanity Linen Cabinet39" or 42" High Wall Cabinet  
93" or 96" High Utility Cabinet

### Profile for:

- Irvington
- Irvington w/ DFO

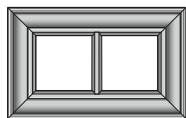


12" High Wall Cabinet

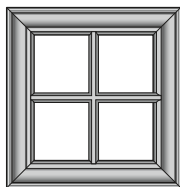
15", 18", 21", 24" or 27"  
High Wall Cabinet30" or 36" High Wall Cabinet  
84" or 90" High Utility Cabinet  
84" High Vanity Linen Cabinet39" or 42" High Wall Cabinet  
93" or 96" High Utility Cabinet

## Profile for:

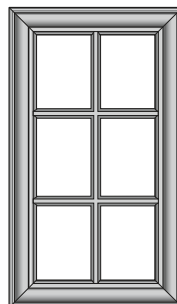
- McKinley



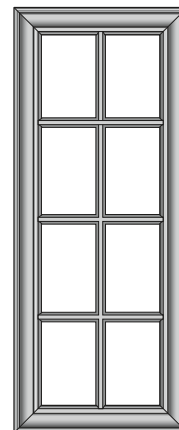
12" High Wall Cabinet



15", 18", 21", 24" or 27"  
High Wall Cabinet



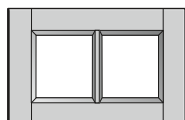
30" or 36" High Wall Cabinet  
84" or 90" High Utility Cabinet  
84" High Vanity Linen Cabinet



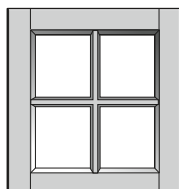
39" or 42" High Wall Cabinet  
93" or 96" High Utility Cabinet

## Profile for:

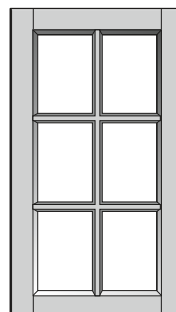
- Stemson
- Stemson w/ DFO



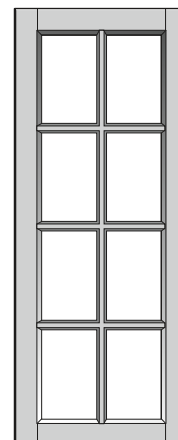
12" High Wall Cabinet



15", 18", 21", 24" or 27"  
High Wall Cabinet



30" or 36" High Wall Cabinet  
84" or 90" High Utility Cabinet  
84" High Vanity Linen Cabinet



39" or 42" High Wall Cabinet  
93" or 96" High Utility Cabinet

## Clear Glass



<b>MFD</b>
<b>OFD</b>

- ½" thick panel
- Clear glass
- Tempered safety glass
- Includes appropriate Decorative Glass Clips
- Order as DGI-\_\_\_CLEAR, refer to Parts Directory for nomenclature and dimensions

## Derbyshire Seeded Glass



<b>MFD</b>
<b>OFD</b>

- ⅝" thick panel
- Clear seeded glass
- Laminated safety glass
- Includes appropriate Decorative Glass Clips
- Order as DGI-\_\_\_DERBYSHIRE, refer to Parts Directory for nomenclature and dimensions

## Frosted Glass



<b>MFD</b>
<b>OFD</b>

- ½" thick panel
- Frosted glass with etched finish
- Tempered safety glass
- Includes appropriate Decorative Glass Clips
- Order as DGI-\_\_\_FROSTED, refer to Parts Directory for nomenclature and dimensions

## Frosted Ash Glass



<b>MFD</b>
<b>OFD</b>

- ½" thick panel
- Gray tinted glass
- Tint is manufactured in material - not a film
- Tempered safety glass
- Includes appropriate Decorative Glass Clips
- Order as DGI-\_\_\_FROSTED ASH, refer to Parts Directory for nomenclature and dimensions

## Impression Glass



<b>MFD</b>
<b>OFD</b>

- ½" thick panel
- Sculptural glass
- Tempered safety glass
- Includes appropriate Decorative Glass Clips
- Order as DGI-\_\_\_IMPRESSION, refer to Parts Directory for nomenclature and dimensions

## Meredith Glass



<b>MFD</b>
<b>OFD</b>

- ¼" overall thickness (⅛" beveled edge thickness)
- Clear glass design with 1 ¼" wide beveled edges
- Tempered safety glass
- Includes appropriate Decorative Glass Clips
- Order as DGI-\_\_\_MEREDITH, refer to Parts Directory for nomenclature and dimensions

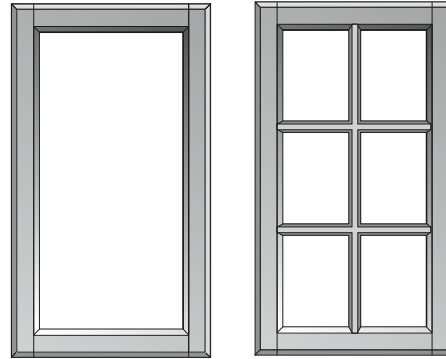
## Ribbed Glass



MFD
OFD

- 1/8" thick panel
- Clear ribbed glass
- Tempered safety glass
- Includes appropriate Decorative Glass Clips
- Not available for Wall Top Hinge cabinets
- Order as DGI-\_\_\_RIBBED, refer to Parts Directory for nomenclature and dimensions

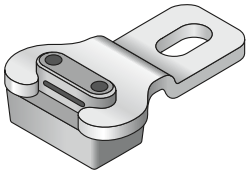
## Prepped for Glass



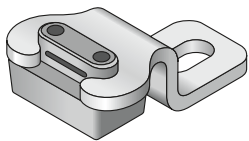
MFD
OFD

- For customer installed inserts up to 5/16" thick
- Refer to pages 50-53 for door style specific profile
- Decorative Glass Clips not included - order separately

## Decorative Glass Clips



CLIP DGI 1/8



CLIP DGI 5/16

- For installation of Decorative Glass Inserts
- Order one bag (six clips) per door
- See chart for correct glass pairing

CLIP DGI 1/8  
CLIP DGI 5/16

Glass Insert	CLIP DGI 1/8	CLIP DGI 5/16
Clear	•	
Derbyshire		•
Frosted	•	
Frosted Ash	•	
Impression	•	
Meredith	•	
Ribbed	•	

