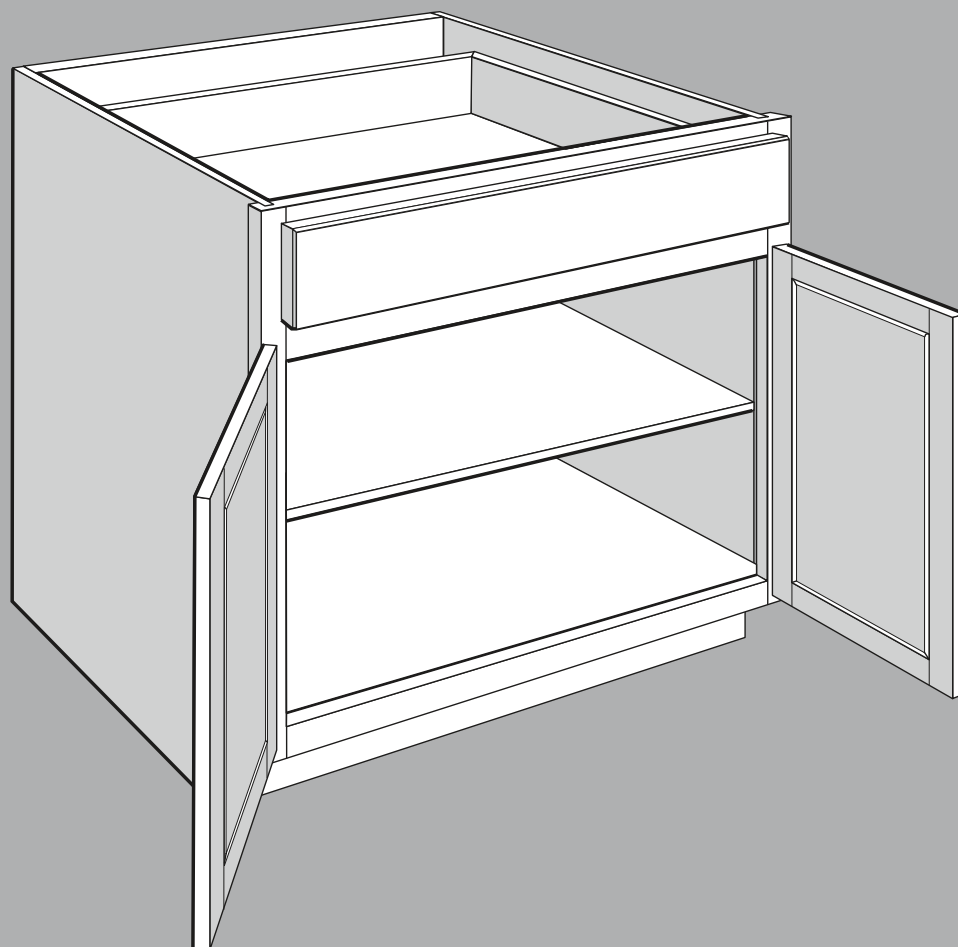
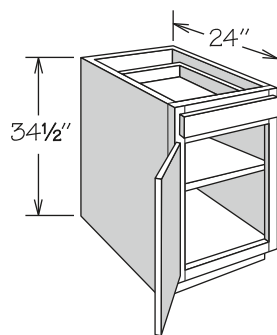


Base Cabinets



Base Cabinet ■ 1 Door and 1 Drawer



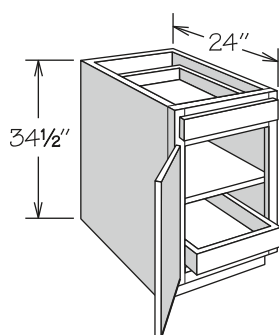
- Full-depth adjustable shelf
- Hinged left and can be reversed in the field

AH
APC
CFO
FE
IF
PE
RD
RTK
VTK

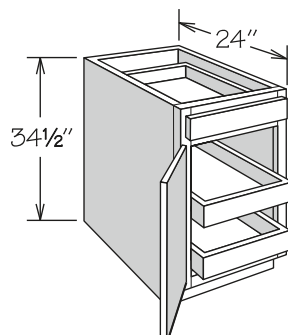
1 SHELF

B12
B15
B18
B21
B24

Base Cabinet ■ 1 Door, 1 Drawer and Deep Roll-Out Trays



1 Roll-Out TRAY



2 Roll-Out TRAYS

- Full-depth adjustable shelf in center position where applicable
- Deep Roll-Out Trays are factory installed and are not adjustable
- Hinged left and can be reversed in the field

AH
APC
FE
PE
RD
RTK
VTD
VTK

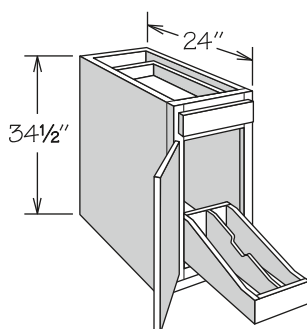
1 ROLL-OUT TRAY

B12 FWT
B15 FWT
B18 FWT
B21 FWT
B24 FWT

2 ROLL-OUT TRAYS

B12 2FWT
B15 2FWT
B18 2FWT
B21 2FWT
B24 2FWT

Base Cabinet ■ 1 Door, 1 Drawer and Roll-Out Tray Divider



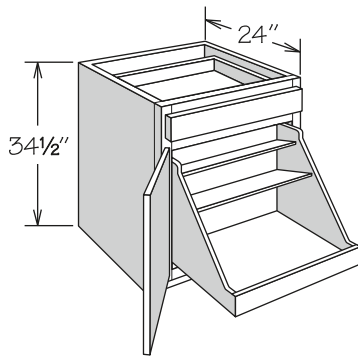
- Roll-Out Tray Divider in natural finish solid wood and wood veneer and dovetail (front only) construction with engineered wood bottom
- B12 ROTD features two compartments (one partition)
- B15 ROTD features three compartments (two partitions)
- Partitions are field installed
- No shelf
- Hinged left and can be reversed in the field

AH
APC
FE
PE
RTK
VTK

ROLL-OUT TRAY DIVIDER

B12 ROTD
B15 ROTD

Base Cabinet • 1 Door, 1 Drawer and Pot & Pan Organizer



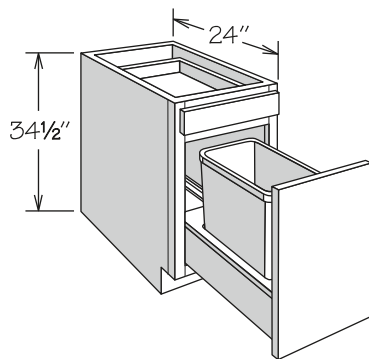
- Organizer is factory installed and features natural finish solid wood, wood veneer and dovetail (front only) construction with engineered wood bottom
- Top shelf of organizer measures 6 3/16" deep
- Middle shelf of organizer measures 9 3/4" deep
- Hinged left and can be reversed in the field

AH
APC
FE
IF
PE
RTK
VTD
VTK

BASE POT & PAN ORGANIZER

B24 BPPO

Base Cabinet • 1 Drawer and Door with Wastebasket Pull-Out



1 WASTEBASKET

- Wastebasket rests in a natural finish wood frame
- Wastebasket pull-out features heavy-duty, 100-pound CushionClose glides
- BWBB15 features one silver plastic 35-quart capacity bin
- BWBB15-2 features two silver plastic 27-quart capacity bins
- BWBB18-2 and BWBB21-2 feature two silver plastic 35-quart capacity bins
- Decorative hardware strongly recommended

AH
APC
FE
IF
PE
RTK
VTK

1 WASTEBASKET

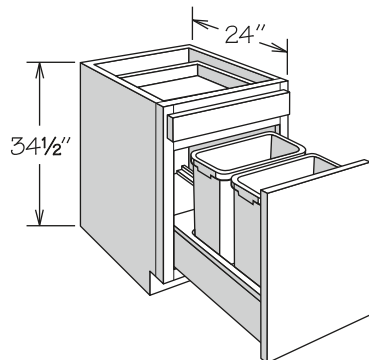
BWBB15

2 WASTEBASKETS

BWBB15-2

BWBB18-2

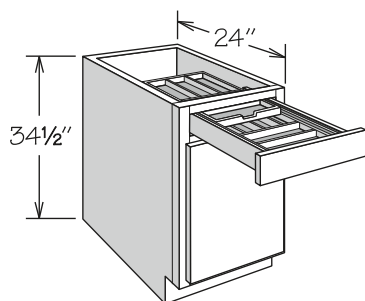
BWBB21-2



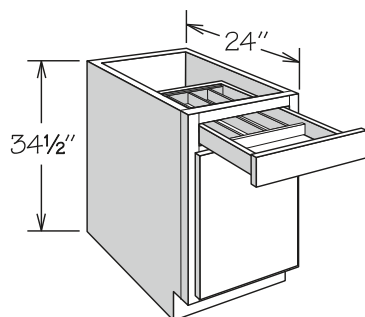
2 WASTEBASKETS

Base Cabinet • Drawer Accessories • 1 Door

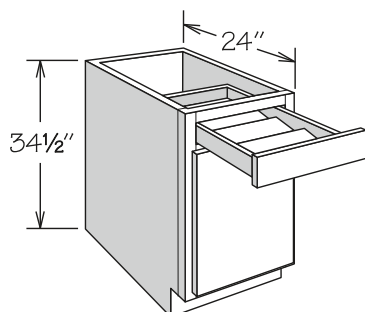
NEW! PRODUCT



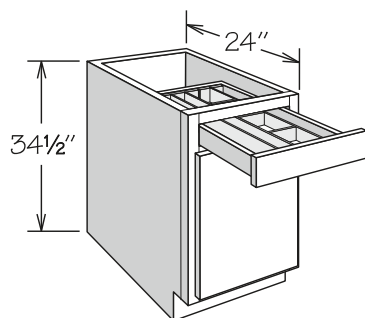
18" WITH WOOD TIERED CUTLERY DIVIDER



18" WITH CUTLERY DIVIDER



18" WITH SPICE DRAWER INSERT



18" WITH ADJUSTABLE DIVIDER INSERT

- Wood Tiered Cutlery Divider features:
 - » Solid hardwood and plywood in natural finish
 - » Upper section slides independently from drawer
- Cutlery Divider features solid hardwood and plywood in natural finish
- Spice Drawer Insert features solid hardwood and plywood in natural finish and accommodates most spice containers (not included)
- Drawer accessories are factory installed, excluding Adjustable Drawer Insert Kits
- Adjustable Drawer Insert Kits are packaged separately for field install and include:
 - » Front and back panels with grooves
 - » Vertical dividers - two are grooved to accept horizontal dividers
 - » Horizontal dividers
- Refer to specifications on individual cabinets and accessories for more details

APC
FE
PE
RTK
VTK

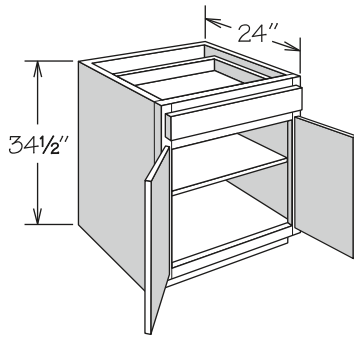
WOOD TIERED CUTLERY DIVIDER	UPPER SECTION	LOWER SECTION
15"	5	5
18"	5	6
21"	6	7
24"	7	7

CUTLERY DIVIDER	SECTIONS
15"	4
18"	5
21"	6
24"	6

ADJUSTABLE DIVIDER INSERT	NUMBER OF VERTICAL DIVIDERS	NUMBER OF HORIZONTAL DIVIDERS
15"	4	3
18"	4	3
21"	4	3
24"	4	3

1 SHELF	1 ROLL-OUT TRAY	2 ROLL-OUT TRAYS
Wood Tiered Cutlery Divider	Wood Tiered Cutlery Divider	Wood Tiered Cutlery Divider
B15 WTCD	B15 FWT WTCD	B15 2FWT WTCD
B18 WTCD	B18 FWT WTCD	B18 2FWT WTCD
B21 WTCD	B21 FWT WTCD	B21 2FWT WTCD
B24 WTCD	B24 FWT WTCD	B24 2FWT WTCD
Cutlery Divider	Cutlery Divider	Cutlery Divider
B15 CD	B15 FWT CD	B15 2FWT CD
B18 CD	B18 FWT CD	B18 2FWT CD
B21 CD	B21 FWT CD	B21 2FWT CD
B24 CD	B24 FWT CD	B24 2FWT CD
Spice Drawer Insert	Spice Drawer Insert	Spice Drawer Insert
B15 SDI	B15 FWT SDI	B15 2FWT SDI
B18 SDI	B18 FWT SDI	B18 2FWT SDI
B21 SDI	B21 FWT SDI	B21 2FWT SDI
B24 SDI	B24 FWT SDI	B24 2FWT SDI
Adjustable Divider	Adjustable Divider	Adjustable Divider
B15 ADI	B15 FWT ADI	B15 2FWT ADI
B18 ADI	B18 FWT ADI	B18 2FWT ADI
B21 ADI	B21 FWT ADI	B21 2FWT ADI
B24 ADI	B24 FWT ADI	B24 2FWT ADI

Base Cabinet • 2 Butt Doors and 1 Drawer



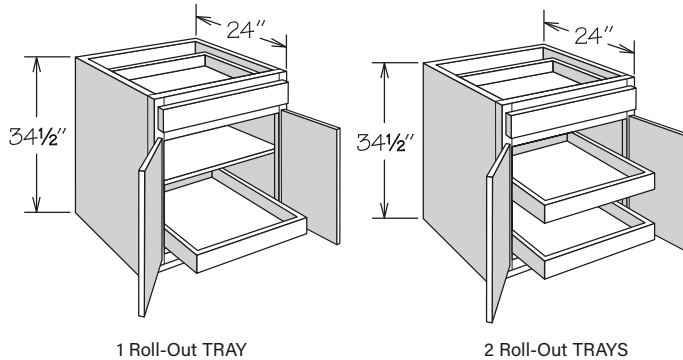
- Full-depth adjustable shelf

AH
APC
CFO
FE
IF
PE
RD
RTK
VTK

1 SHELF

B24 BUTT
B27 BUTT
B30 BUTT
B33 BUTT
B36 1TD BUTT

Base Cabinet • 2 Butt Doors, 1 Drawer and Deep Roll-Out Trays



- Full-depth adjustable shelf
- Center support for shelf provided for cabinets 27" or wider
- Deep Roll-Out Trays are factory installed and are not adjustable

AH
APC
FE
PE
RD
RTK
VTD
VTK

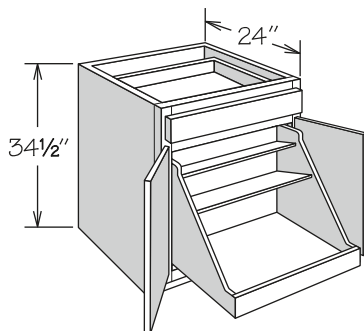
1 ROLL-OUT TRAY

B24 FWT BUTT
B27 FWT BUTT
B30 FWT BUTT
B33 FWT BUTT
B36 1TD FWT BUTT

2 ROLL-OUT TRAYS

B24 2FWT BUTT
B27 2FWT BUTT
B30 2FWT BUTT
B33 2FWT BUTT
B36 1TD 2FWT BUTT

Base Cabinet • 2 Butt Doors, 1 Drawer and Pot & Pan Organizer



- Organizer is factory installed and features natural finish solid wood, wood veneer and dovetail (front only) construction with engineered wood bottom
- Top shelf of organizer measures 6³/₁₆" deep
- Middle shelf of organizer measures 9³/₄" deep

AH
APC
FE
IF
PE
RTK
VTD
VTK

BASE POT & PAN ORGANIZER

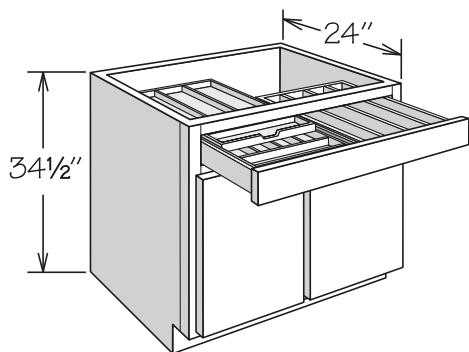
B24 BUTT BPPO
B27 BUTT BPPO
B30 BUTT BPPO
B33 BUTT BPPO
B36 1TD BUTT BPPO

Base Cabinet ■ Drawer Accessories ■ 2 Doors

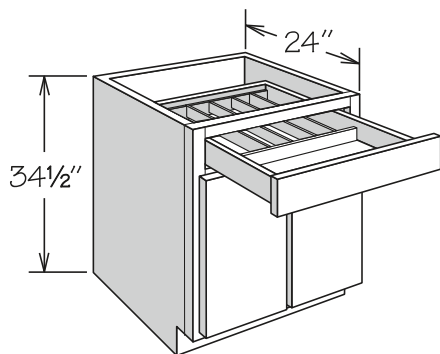
NEW!

PRODUCT

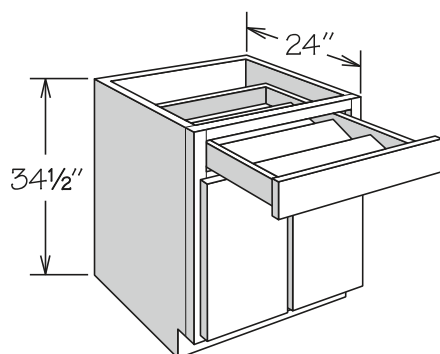
APC
FE
PE
RTK
VTK



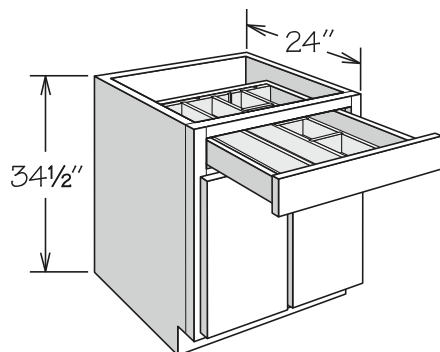
30" WITH WOOD TIERED CUTLERY DIVIDER



24" WITH CUTLERY DIVIDER



24" WITH SPICE DRAWER INSERT



24" WITH ADJUSTABLE DIVIDER INSERT

- Wood Tiered Cutlery Divider features:
 - » Solid hardwood and plywood in natural finish
 - » Upper section slides independently from drawer
 - » Additional cooking utensil section on 30" or wider
- Cutlery Divider features solid hardwood and plywood in natural finish
- Spice Drawer Insert features solid hardwood and plywood in natural finish and accommodates most spice containers (not included)
- Drawer accessories are factory installed, excluding Adjustable Drawer Insert Kits
- Adjustable Drawer Insert Kits are packaged separately for field install and include:
 - » Front and back panels with grooves
 - » Vertical dividers - two are grooved to accept horizontal dividers
 - » Horizontal divider
- Refer to specifications on individual cabinets and accessories for more details

WOOD TIERED CUTLERY DIVIDER

	UPPER SECTIONS	LOWER SECTIONS	COOKING UTENSIL SECTIONS
24"	7	7	-
30"	5	5	4
36"	5	5	5

CUTLERY DIVIDER

	SECTIONS
24"	6
30"	7
36"	8

ADJUSTABLE DIVIDER INSERT

	NUMBER OF VERTICAL DIVIDERS	NUMBER OF HORIZONTAL DIVIDERS
24"	4	3
27"	5	3
30"	5	3
33"	9	3
36"	9	3

1 SHELF

Wood Tiered Cutlery Divider

B24 BUTT WTCD
B30 BUTT WTCD
B36 1TD BUTT WTCD

Cutlery Divider

B24 BUTT CD
B30 BUTT CD
B36 1TD BUTT CD

Spice Drawer Insert

B24 BUTT SDI

Adjustable Divider

B24 BUTT ADI
B27 BUTT ADI
B30 BUTT ADI
B33 BUTT ADI
B36 1TD BUTT ADI

1 ROLL-OUT TRAY

Wood Tiered Cutlery Divider

B24 FWT BUTT WTCD
B30 FWT BUTT WTCD
B36 1TD FWT BUTT WTCD

Cutlery Divider

B24 FWT BUTT CD
B30 FWT BUTT CD
B36 1TD FWT BUTT CD

Spice Drawer Insert

B24 FWT BUTT SDI

Adjustable Divider

B24 FWT BUTT ADI
B27 FWT BUTT ADI
B30 FWT BUTT ADI
B33 FWT BUTT ADI
B36 1TD FWT BUTT ADI

2 ROLL-OUT TRAYS

Wood Tiered Cutlery Divider

B24 2FWT BUTT WTCD
B30 2FWT BUTT WTCD
B36 1TD 2FWT BUTT WTCD

Cutlery Divider

B24 2FWT BUTT CD
B30 2FWT BUTT CD
B36 1TD 2FWT BUTT CD

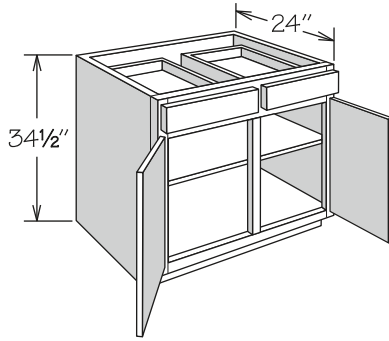
Spice Drawer Insert

B24 2FWT BUTT SDI

Adjustable Divider

B24 2FWT BUTT ADI
B27 2FWT BUTT ADI
B30 2FWT BUTT ADI
B33 2FWT BUTT ADI
B36 1TD 2FWT BUTT ADI

Base Cabinet • 2 Doors and 2 Drawers



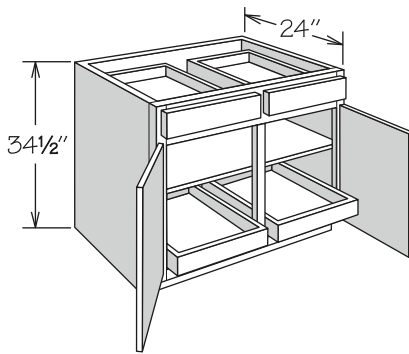
- Full-depth adjustable shelf
- Center support for shelf provided

AH
APC
CFO
FE
IF
PE
RD
RTK
VTK

1 SHELF

B39
B42
B48

Base Cabinet • 2 Doors, 2 Drawers and Deep Roll-Out Trays



2 Roll-Out TRAYS

- Full-depth adjustable shelf in center position where applicable
- Center support for shelf provided
- Deep Roll-Out Trays are factory installed and are not adjustable

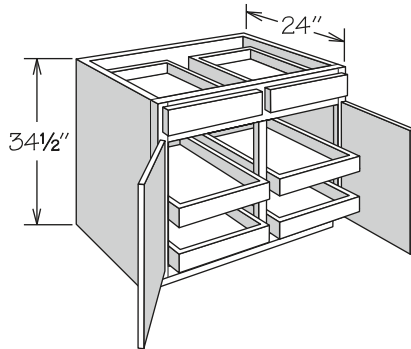
AH
APC
FE
PE
RD
RTK
VTD
VTK

2 ROLL-OUT TRAYS

B39 2T
B42 2T
B48 2T

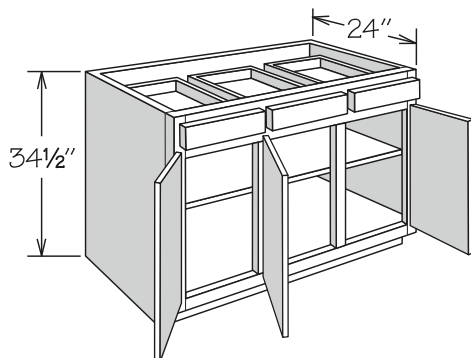
4 ROLL-OUT TRAYS

B39 4T
B42 4T
B48 4T



4 Roll-Out TRAYS

Base Cabinet • 3 Doors and 3 Drawers



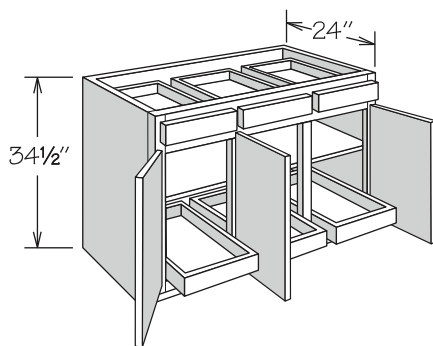
- Full-depth adjustable shelf
- Center support for shelf provided
- Hinged as shown – can be reversed in the field

AH
APC
CFO
FE
PE
IF
RD
RTK
VTK

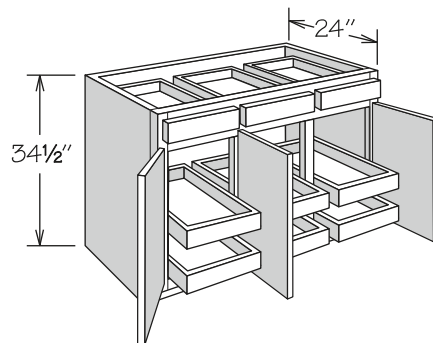
1 SHELF

B45

Base Cabinet • 3 Doors, 3 Drawers and Deep Roll-Out Trays



3 Roll-Out TRAYS



6 Roll-Out TRAYS

- Full-depth adjustable shelf in center position where applicable
- Center support for shelf provided
- Deep Roll-Out Trays are factory installed and are not adjustable
- Hinged as shown – can be reversed in the field

AH
APC
FE
PE
RD
RTK
VTD
VTK

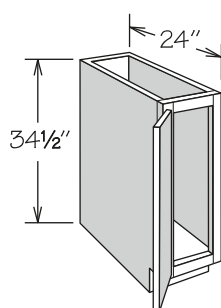
3 ROLL-OUT TRAYS

B45 3T

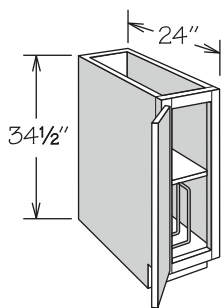
6 ROLL-OUT TRAYS

B45 6T

Full-Height Base Cabinet • 1 Door



NO SHELF



1 SHELF & TRAY DIVIDER

- Full-height door
- Recessed Toe Kick Option available left (RTKL) or right (RTKR) only
- TB9 TDS is only available with RD-23 through RD-14
- TB9 TDS features full-depth adjustable shelf (S924) and Tray Divider (TD3) packaged separately for field installation
- Hinged left and can be reversed in the field

AH
APC
CFO ■
FE
PE
RD
RTK
VTK

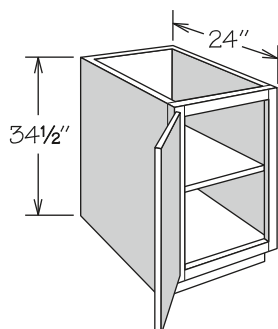
NO SHELF

TB9 ■

1 SHELF & TRAY DIVIDER

TB9 TDS

Full-Height Base Cabinet • 1 Door



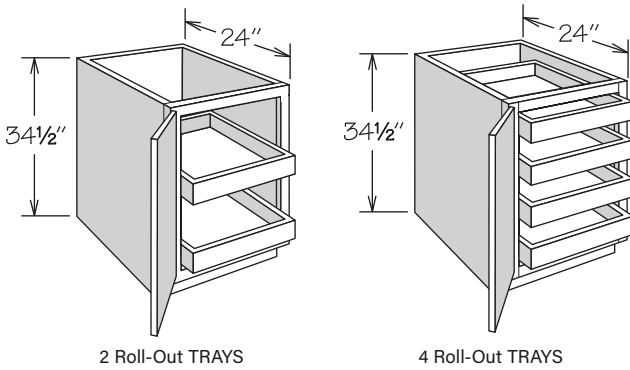
- Full-depth adjustable shelf
- Full-height door
- Hinged left and can be reversed in the field

AH
APC
CFO
FE
PE
RD
RTK
VTK

1 SHELF

B12 FH
B15 FH
B18 FH
B21 FH
B24 FH

Full-Height Base Cabinet ▪ 1 Door and Deep Roll-Out Trays



- Full-height door
- Deep Roll-Out Trays are factory installed and are not adjustable
- Distance between two Roll-Out trays is 10¹/₁₆"
- Distance between four Roll-Out trays is 4⁷/₁₆"
- Hinged left and can be reversed in the field

AH
APC
FE
PE
RD
RTK
VTK

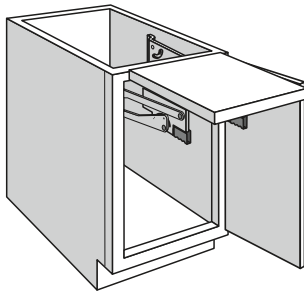
2 ROLL-OUT TRAYS

B12 FH 2FWT
B15 FH 2FWT
B18 FH 2FWT
B21 FH 2FWT
B24 FH 2FWT

4 ROLL-OUT TRAYS

B12 FH 4FWT
B15 FH 4FWT
B18 FH 4FWT
B21 FH 4FWT
B24 FH 4FWT

Full-Height Base Cabinet ▪ 1 Door and Base Mixer Lift



- Full-height door
- Features Furniture Ends standard
- Includes 1³/₈" thick natural finish solid wood shelf and one pair of shock dampening, adjustable tension lifts
- Supports up to 60 pounds
- Cannot be used with Deep Roll-Out Tray or adjustable shelf
- Kit packaged separately for field installation

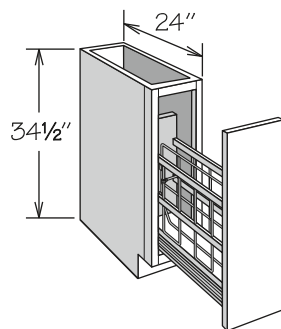
AH
APC
RTK
VTK

BASE MIXER LIFT

B18 FH MLK

Full-Height Base Cabinet ▪ 1 Door with Tray Divider Pull-Out

NEW! **SIZE**



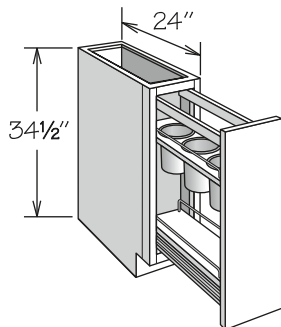
- Full-height door
- Tray divider is adjustable to accommodate various storage solutions
- Decorative hardware strongly recommended
- BTDP9 not available with Recessed Toe Kick Both Option (RTKB)

AH
APC
FE
PE
RTK
VTK

TRAY DIVIDER PULL-OUT

BTDP9
BTDP12

Full-Height Base Cabinet • 1 Door with Utensil Storage Pull-Out



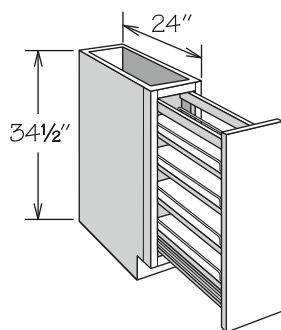
- Full-height door
- One fixed bottom and one adjustable lower shelf in a natural finish with chrome rails
- One fixed upper shelf in a natural finish with chrome rails and three stainless steel removable storage bins
- Stainless steel bins measure 5 1/4" wide x 6 7/8" deep
- Decorative hardware strongly recommended
- BPPUS9 not available with Recessed Toe Kick Both Option (RTKB)

AH
APC
FE
PE
RTK
VTK

UTENSIL STORAGE PULL-OUT

BPPUS9
BPPUS12

Full-Height Base Cabinet • 1 Door with Base Pantry Pull-Out



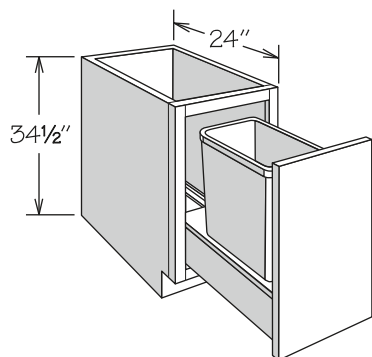
- Full-height door
- One fixed and three adjustable shelves with chrome rails
- Decorative hardware strongly recommended
- BPP9 not available with Recessed Toe Kick Both Option (RTKB)

AH
APC
FE
PE
RTK
VTK

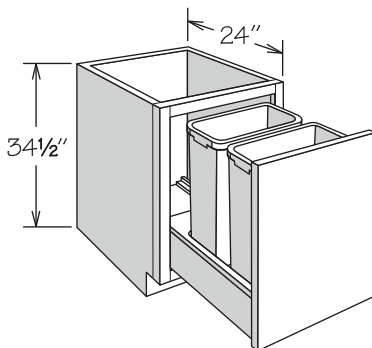
BASE PANTRY PULL-OUT

BPP9
BPP12

Full-Height Base Cabinet • 1 Door with Wastebasket Pull-Out



1 WASTEBASKET



2 WASTEBASKETS

- Full-height door
- Wastebasket rests in a natural finish wood frame
- Wastebasket pull-out features heavy-duty, 100-pound rated CushionClose glides
- BWBB15 FH and BWBB18 FH feature one silver plastic 50-quart capacity bin
- BWBB21-2 FH features two silver plastic 50-quart capacity bins
- Decorative hardware strongly recommended

AH
APC
FE
PE
RTK
VTK

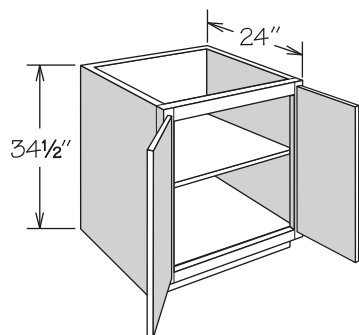
1 WASTEBASKET

BWBB15 FH
BWBB18 FH

2 WASTEBASKETS

BWBB21-2 FH

Full-Height Base Cabinet • 2 Butt Doors



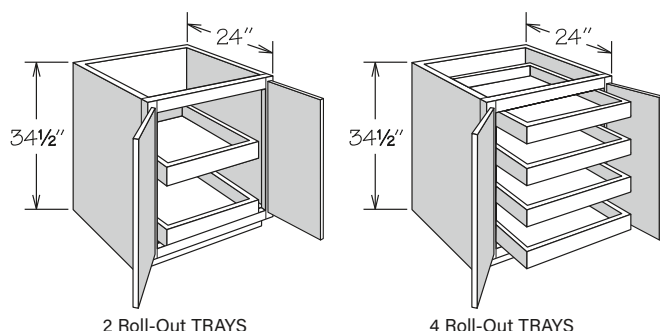
- Full-depth adjustable shelf
- Full-height doors

AH
APC
CFO
FE
PE
RD
RTK
VTK

1 SHELF

B24 BUTT FH
B27 BUTT FH
B30 BUTT FH
B33 BUTT FH
B36 BUTT FH

Full-Height Base Cabinet • 2 Butt Doors and Deep Roll-Out Trays



- Full-height doors
- Deep Roll-Out Trays are factory installed and are not adjustable
- Distance between two Roll-Out trays is 10 ¹³/₁₆"
- Distance between four Roll-Out trays is 4 ⁷/₁₆"

AH
APC
FE
PE
RD
RTK
VTK

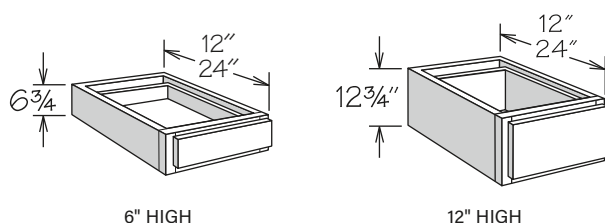
2 ROLL-OUT TRAYS

B24 BUTT FH 2FWT
B27 BUTT FH 2FWT
B30 BUTT FH 2FWT
B33 BUTT FH 2FWT
B36 BUTT FH 2FWT

4 ROLL-OUT TRAYS

B24 BUTT FH 4FWT
B27 BUTT FH 4FWT
B30 BUTT FH 4FWT
B33 BUTT FH 4FWT
B36 BUTT FH 4FWT

Furniture Drawer Cabinet • 1 Drawer



- 6" high features one standard drawer and 12" high features one large drawer
- 24" deep Furniture Drawer cabinets are only available with RD-23 through RD-13
- Bottom of cabinet frame must be fully supported

APC
CFO
FE
PE
RD ■

6" HIGH • 1 DRAWER

12" Deep

FD121206
FD151206
FD181206
FD211206
FD241206
FD271206
FD301206
FD331206
FD361206

24" Deep

FD122406 ■
FD152406 ■
FD182406 ■
FD212406 ■
FD242406 ■
FD272406 ■
FD302406 ■
FD332406 ■
FD362406 ■

12" HIGH • 1 DRAWER

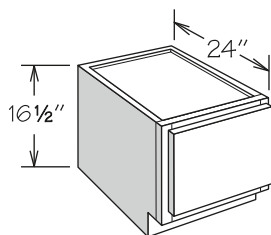
12" Deep

FD121212
FD151212
FD181212
FD211212
FD241212
FD271212
FD301212
FD331212
FD361212

24" Deep

FD122412 ■
FD152412 ■
FD182412 ■
FD212412 ■
FD242412 ■
FD272412 ■
FD302412 ■
FD332412 ■
FD362412 ■

Pedestal Drawer Cabinet • 1 Drawer



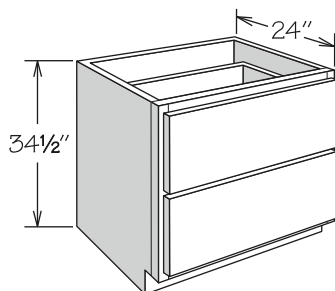
- One large drawer
- Features solid top

APC
CFO
FE
PE
RD
RTK
VTK

1 DRAWER

PD1217 1DWR
PD1517 1DWR
PD1817 1DWR
PD2117 1DWR
PD2417 1DWR
PD2717 1DWR
PD3017 1DWR
PD3317 1DWR
PD3617 1DWR

Drawer Base Cabinet • 2 Drawers



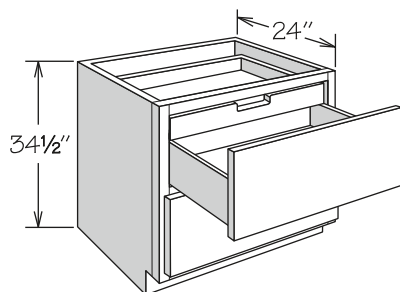
- Two large drawers with extra large drawer fronts
- Drawer body measures 6¹⁵/₁₆" high
- Drawers feature Full-Extension CushionClose heavy-duty 132 pound rated glides
- Only available with RD-23 through RD-21

AH
APC
CFO
FE
PE
RD
RTK
VTK

2 DRAWERS

DB21 2DWR
DB24 2DWR
DB27 2DWR
DB30 2DWR
DB33 2DWR
DB36 2DWR

Drawer Base Cabinet • 2 Drawers and Scalloped Roll-Out Tray



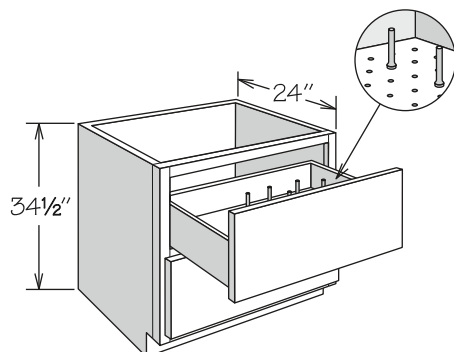
- Two large drawers with extra large drawer fronts
- Drawer body measures 6¹⁵/₁₆" high
- Drawers feature Full-Extension CushionClose heavy-duty 132 pound rated glides
- Scalloped Deep Roll-Out Tray with full-access soft-close glides in top opening
- Only available with RD-23 through RD-21

AH
APC
FE
PE
RD
RTK
VTK

2 DRAWERS

DB21 2DWR SFWT
DB24 2DWR SFWT
DB27 2DWR SFWT
DB30 2DWR SFWT
DB33 2DWR SFWT
DB36 2DWR SFWT

Drawer Base Cabinet • 2 Drawers and Peg Dish Organizer



- Two large drawers with extra large drawer fronts
- Drawer body measures 6¹⁵/₁₆" high
- Drawers feature Full-Extension CushionClose heavy-duty 132 pound rated glides
- One Peg Dish Organizer Kit (organizer and adjustable pegs) in natural finish, packaged separately for field installation
- Additional pegs (PEG KIT 4 PK) and Peg Dish Organizer Kits (PDO_) can be ordered separately

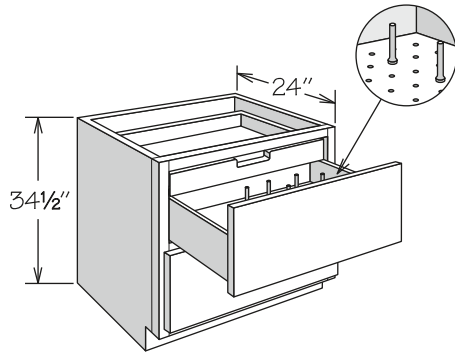
AH
APC
FE
PE
RTK
VTK

2 DRAWERS

PEG COUNT

DB21 2DWR PDO	8
DB24 2DWR PDO	12
DB27 2DWR PDO	12
DB30 2DWR PDO	12
DB33 2DWR PDO	12
DB36 2DWR PDO	12

Drawer Base Cabinet • 2 Drawers, Scalloped Roll-Out Tray and Peg Dish Organizer



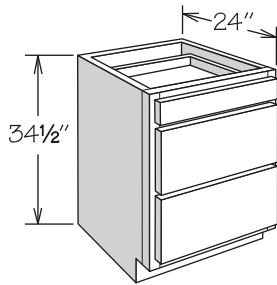
- Two large drawers with extra large drawer fronts
- Drawer body measures 6¹⁵/₁₆" high
- Drawers feature Full-Extension CushionClose heavy-duty 132 pound rated glides
- Scalloped Deep Roll-Out Tray with full-access soft-close Glides in top opening
- One Peg Dish Organizer Kit (organizer and adjustable pegs) in natural finish, packaged separately for field installation
- Additional pegs (PEG KIT 4 PK) and Peg Dish Organizer Kits (PDO_) can be ordered separately

AH
APC
FE
PE
RTK
VTK

2 DRAWERS PEG COUNT

DB21 2DWR SFWT PDO	8
DB24 2DWR SFWT PDO	12
DB27 2DWR SFWT PDO	12
DB30 2DWR SFWT PDO	12
DB33 2DWR SFWT PDO	12
DB36 2DWR SFWT PDO	12

Drawer Base Cabinet • 3 Drawers



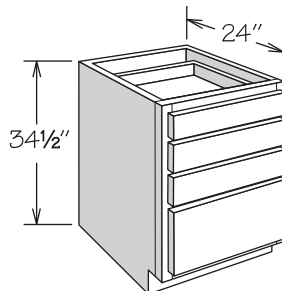
- One standard and two large drawers

AH
APC
CFO
FE
PE
RD
RTK
VTD
VTK

3 DRAWERS

DB12
DB15
DB18
DB21
DB24
DB27
DB30
DB33
DB36 1TD

Drawer Base Cabinet • 4 Drawers



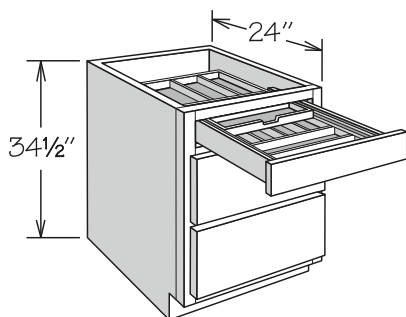
- One large and three standard drawers

AH
APC
CFO
FE
PE
RD
RTK
VTD
VTK

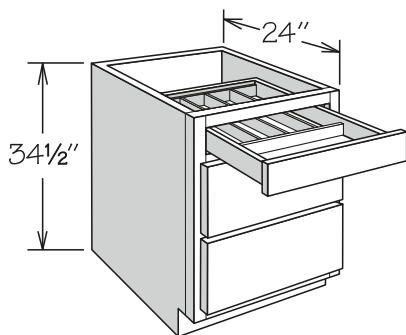
4 DRAWERS

DB12 4DWR
DB15 4DWR
DB18 4DWR
DB21 4DWR
DB24 4DWR

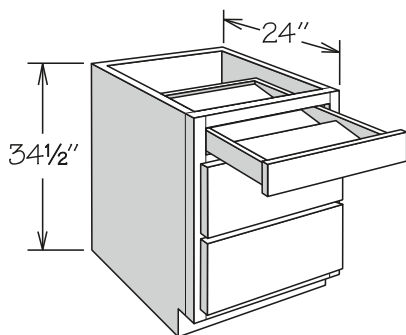
Drawer Base Cabinet ■ Drawer Accessories



3 DRAWER
18" Wood Tiered Cutlery Divider Shown



3 DRAWER
18" Cutlery Divider Shown



3 DRAWER
18" Spice Drawer Insert Shown

- Wood Tiered Cutlery Divider features:
 - » Solid hardwood and plywood in natural finish
 - » Upper section slides independently from drawer
 - » Additional cooking utensil section on 30" or wider
- Cutlery Divider features solid hardwood and plywood in natural finish
- Spice Drawer Insert features solid hardwood and plywood in natural finish and accommodates most spice containers (not included)
- Drawer accessories are factory installed
- Refer to specifications on individual cabinets and accessories for more details

APC
FE
PE
RTK
VTK

WOOD TIERED CUTLERY DIVIDER	UPPER SECTIONS	LOWER SECTIONS	COOKING UTENSIL SECTIONS
15"	5	5	-
18"	5	6	-
21"	6	7	-
24"	7	7	-
30"	5	5	4
36"	5	5	5

CUTLERY DIVIDER	SECTIONS
15"	4
18"	5
21"	6
24"	6
30"	7
36"	8

3 DRAWER

Wood Tiered Cutlery Divider

DB15 WTCD
DB18 WTCD
DB21 WTCD
DB24 WTCD
DB30 WTCD
DB36 1TD WTCD

Cutlery Divider

DB15 CD
DB18 CD
DB21 CD
DB24 CD
DB30 CD
DB36 1TD CD

Spice Drawer Insert

DB15 SDI
DB18 SDI
DB21 SDI
DB24 SDI

4 DRAWER

Wood Tiered Cutlery Divider

DB15 4DWR WTCD
DB18 4DWR WTCD
DB21 4DWR WTCD
DB24 4DWR WTCD

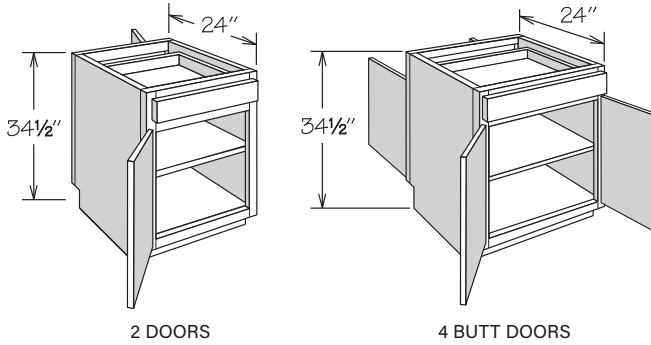
Cutlery Divider

DB15 4DWR CD
DB18 4DWR CD
DB21 4DWR CD
DB24 4DWR CD

Spice Drawer Insert

DB15 4DWR SDI
DB18 4DWR SDI
DB21 4DWR SDI
DB24 4DWR SDI

Peninsula Base • 1 Drawer



- Full-depth adjustable shelf
- Drawer accessible on one side only
- Panel on opposite side of drawer
- When selecting the Recessed Toe Kick Option, the drawer side indicates the front of the cabinet
- Single door cabinets are hinged left and can be reversed in the field

APC
FE
PE
RD
RTK
VTD
VTK

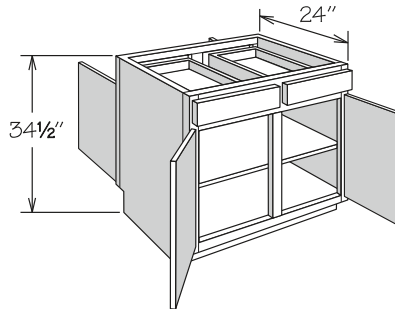
2 DOORS

PB12
PB18
PB24

4 BUTT DOORS

PB24 BUTT
PB30 BUTT
PB36 1TD BUTT

Peninsula Base • 2 Drawers



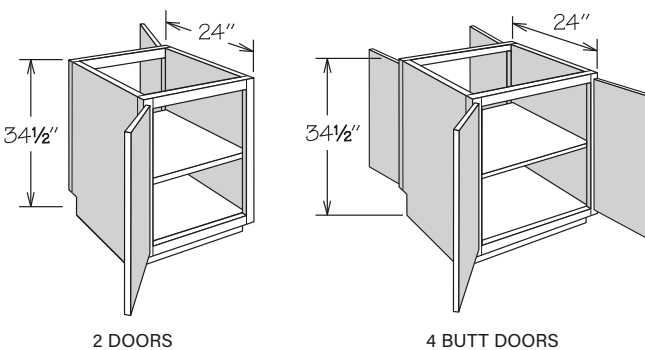
- Full-depth adjustable shelf
- Drawers accessible on one side only
- Features two panels on opposite side of drawers
- When selecting the Recessed Toe Kick Option, the drawer side indicates the front of the cabinet

APC
FE
PE
RD
RTK
VTD
VTK

4 DOORS

PB42

Full-Height Peninsula Base



- Full-height doors
- Full-depth adjustable shelf
- Single door cabinets are hinged left and can be reversed in the field

APC
FE
PE
RD
RTK
VTK

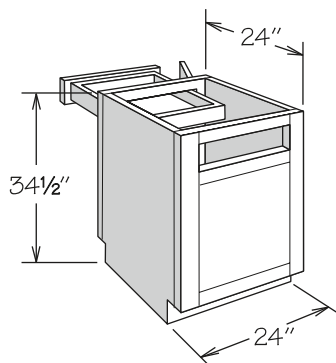
2 DOORS

PB12 FH
PB18 FH

4 BUTT DOORS

PB24 BUTT FH
PB30 BUTT FH
PB36 BUTT FH

Blind Peninsula Corner Base



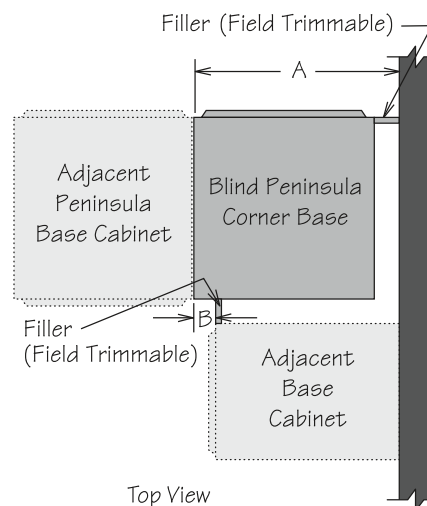
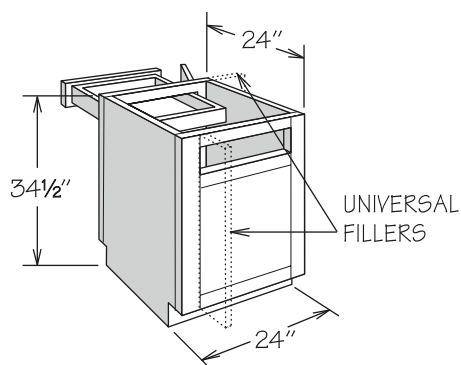
- Full-depth adjustable shelf
- Can be installed left or right
- Universal Fillers are recommended for use between PBC24 and wall and adjoining base cabinet or appliance for hardware clearance and proper door operation
- Cabinet may require pulling from wall - refer to the chart below for specifications
- Roll-out accessories are not recommended
- Must order Universal Fillers separately
- PBC24 is hinged left and can be reversed in the field

APC
FE
PE
RD
VTK

1 DOOR
PBC24

2 DOORS
PBC24 BUTT

Blind Peninsula Corner Base Installation Chart



Full Overlay Door Styles

Full overlay door styles require decorative hardware, which has been calculated into dimensions.

*Must use these dimensions if optional Overlay Fillers will be used.

Cabinet	Actual Cabinet Width	Door Opening	Door(s)	Wall Space A			Exposed Frame B		Filler (at wall)	
				Min. Space	Max. Pull	Max. Space*	Min. Space	Max. Space*	Min.	Max.*
PBC24	24"	20 3/4"	DR2424	26 1/4"	3/4"	27"	2 1/4"	3"	2 1/4"	3"
PBC24 BUTT	24"	20 3/4"	DR1224 BUTT (2)	26 1/4"	3/4"	27"	2 1/4"	3"	2 1/4"	3"

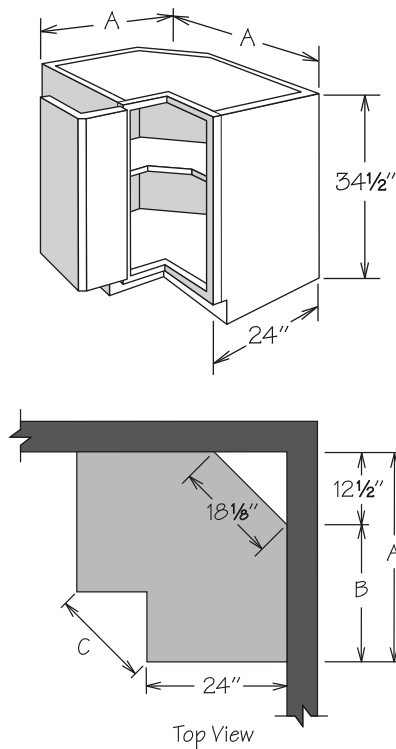
Partial Overlay Door Styles

Wall Space A requirements include optional decorative hardware clearance.

1 1/4" may be deducted if decorative hardware is not used.

Cabinet	Actual Cabinet Width	Door Opening	Door(s)	Wall Space A			Exposed Frame B		Filler (at wall)	
				Min. Space	Max. Pull	Max. Space	Min. Space	Max. Space	Min.	Max.
PBC24	24"	20 3/4"	DR2424	25 3/8"	1 5/8"	27"	1 3/8"	3"	1 3/8"	3"
PBC24 BUTT	24"	20 3/4"	DR1224 BUTT (2)	25 3/8"	1 5/8"	27"	1 3/8"	3"	1 3/8"	3"

Base Easy Reach

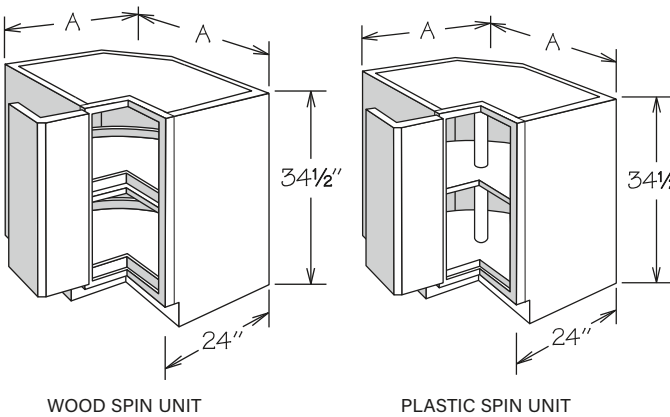


- One adjustable half-depth shelf (non-removable)
- All door styles must be ordered hinged left or right
- BER33 features two solid recessed panel doors for the McKinley door style
- Stile width and outside profile of both doors at door-to-door hinge may vary from standard dimension and profile for proper door function
- Features a solid top
- Sides are finished
- Face frame will be notched for hinges on full overlay (FOL) door styles
- Doors open 170°
- Not available with CushionClose hinge
- A minimum of 32" is recommended to fit through doorway
- Additional space recommended if appliance is installed on the hinge side of this cabinet for proper door operation - decorative hardware should be taken into consideration for the overall depth of appliance

AH
APC
FE
PE
VTK

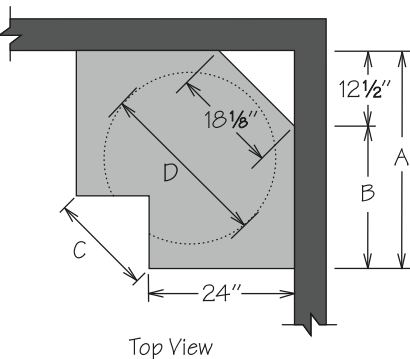
SHELF	A	B	C
BER33	33"	20 1/2"	10 7/16"
BER36	36"	23 1/2"	14 5/8"

Base Super Susan • Spin Unit



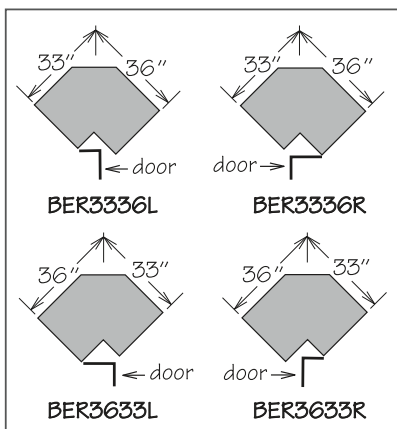
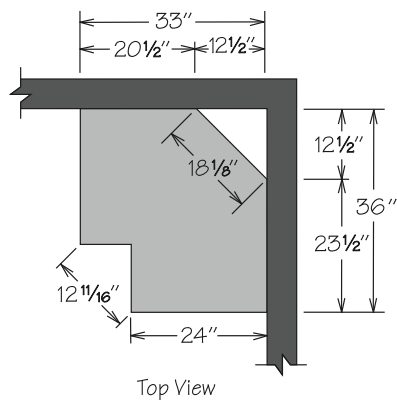
- All door styles must be ordered hinged left or right
- BER33 features two solid recessed panel doors for the McKinley door style
- Stile width and outside profile of both doors at door-to-door hinge may vary from standard dimension and profile for proper door function
- Features a solid top
- Sides are finished
- Face frame will be notched for hinges on full overlay (FOL) door styles
- Doors open 170°
- Not available with CushionClose hinge
- A minimum of 32" is recommended to fit through doorway
- Additional space recommended if appliance is installed on the hinge side of this cabinet for proper door operation - decorative hardware should be taken into consideration for the overall depth of appliance
- Wood Spin Units feature:
 - » One fixed spin unit mounted on cabinet floor
 - » One spin unit attached to 3/4" adjustable shelf
 - » Natural wood finish with 1" lip
- Plastic Spin Units feature:
 - » Two spin shelves with pole (top shelf adjustable)
 - » White high strength plastic shelves

AH
APC
FE
PE
VTK



WOOD SPIN UNIT	A	B	C	D
BSS33 WD	33"	20 1/2"	10 7/16"	28"
BSS36 WD	36"	23 1/2"	14 5/8"	32"
PLASTIC SPIN UNIT	A	B	C	D
BSS33	33"	20 1/2"	10 7/16"	28"
BSS36	36"	23 1/2"	14 5/8"	32"

Asymmetrical Base Easy Reach



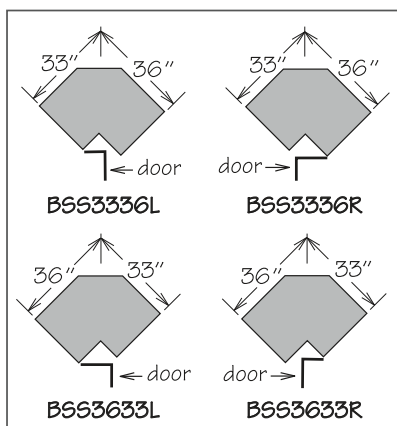
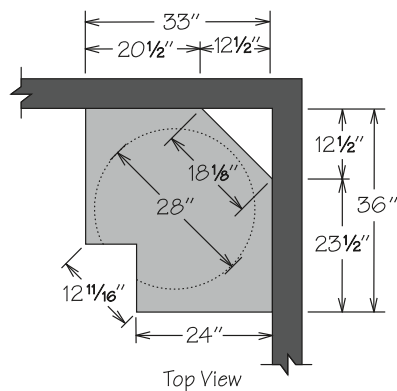
- One adjustable half-depth shelf (non-removable)
- All door styles must be ordered hinged left or right
- McKinley door style features one solid recessed panel door (33" side) and one solid raised panel door (36" side)
- Stile width and outside profile of both doors at door-to-door hinge may vary from standard dimension and profile for proper door function
- Features a solid top
- Sides are finished
- Face frame will be notched for hinges on full overlay (FOL) door styles
- Doors open 170°
- Not available with CushionClose hinge
- A minimum of 32" is recommended to fit through doorway
- Additional space recommended if appliance is installed on the hinge side of this cabinet for proper door operation - decorative hardware should be taken into consideration for the overall depth of appliance

AH
APC
FE
PE
VTK

SHELF

BER3336
BER3633

Asymmetrical Base Super Susan • Spin Unit



- All door styles must be ordered hinged left or right
- McKinley door style features one solid recessed panel door (33" side) and one solid raised panel door (36" side)
- Stile width and outside profile of both doors at door-to-door hinge may vary from standard dimension and profile for proper door function
- Features a solid top
- Sides are finished
- Face frame will be notched for hinges on full overlay (FOL) door styles
- Doors open 170°
- Not available with CushionClose hinge
- A minimum of 32" is recommended to fit through doorway
- Additional space recommended if appliance is installed on the hinge side of this cabinet for proper door operation - decorative hardware should be taken into consideration for the overall depth of appliance
- Wood Spin Units feature:
 - » One fixed spin unit mounted on cabinet floor
 - » One spin unit attached to 3/4" adjustable shelf
 - » Natural wood finish with 1" lip
- Plastic Spin Units feature:
 - » Two spin shelves with pole (top shelf adjustable)
 - » White high strength plastic shelves

AH
APC
FE
PE
VTK

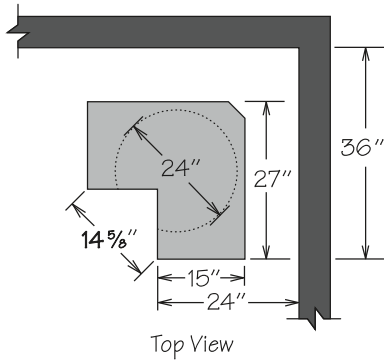
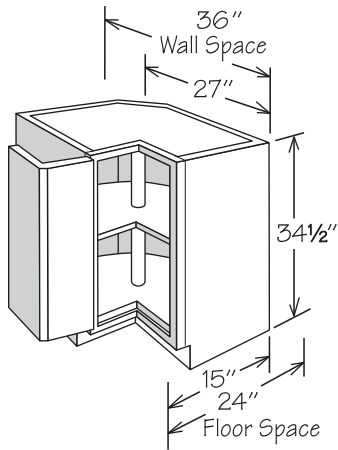
WOOD SPIN UNIT

BSS3336 WD
BSS3633 WD

PLASTIC SPIN UNIT

BSS3336
BSS3633

Corner Base Carousel • Spin Unit



- All door styles must be ordered hinged left or right
- Stile width and outside profile of both doors at door-to-door hinge may vary from standard dimension and profile for proper door function
- Features a solid top
- Sides are unfinished
- Doors open 170°
- Not available with CushionClose hinge
- If unit has an exposed side, order end panel separately
- Additional support for countertop in back is necessary
- Additional space recommended if appliance is installed on the hinge side of this cabinet for proper door operation—decorative hardware should be taken into consideration for the overall depth of appliance
- Unit must be pulled to install in a 36" x 36" space
- Wood Spin Units feature:
 - » Two natural finish solid hardwood spin shelves with pole (top shelf adjustable)
- Plastic Spin Units feature:
 - » Two white high strength plastic spin shelves with pole (top shelf adjustable)

AH
VTK

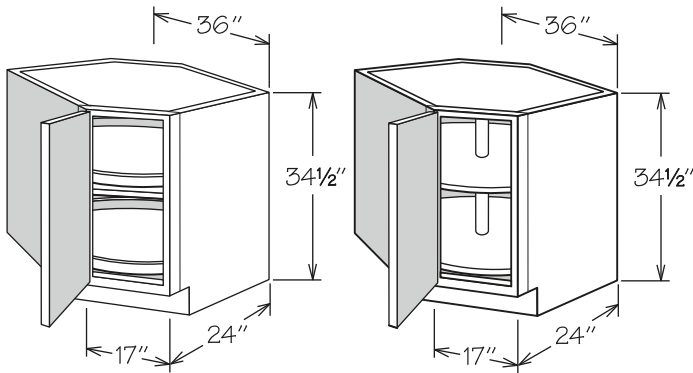
WOOD SPIN UNIT

CAR36 WD

PLASTIC SPIN UNIT

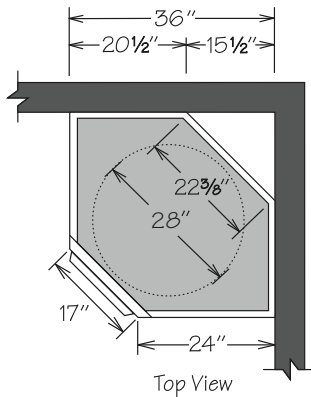
CAR36

Corner Base • Spin Unit



WOOD SPIN UNIT

PLASTIC SPIN UNIT



- Hinged left and can be reversed in the field
- Sides are finished
- A minimum of 32" is recommended to fit through doorway
- Additional space recommended if appliance is installed on the hinge side of this cabinet for proper door operation
- Cabinet features solid top
- Wood Spin Units feature:
 - » One fixed spin unit mounted on cabinet floor
 - » One spin unit attached to 3/4" adjustable shelf
 - » Natural wood finish with 1" lip
- Plastic Spin Units feature:
 - » Two spin shelves with pole (top shelf adjustable)
 - » White high strength plastic shelves

AH
APC
FE
PE
VTK

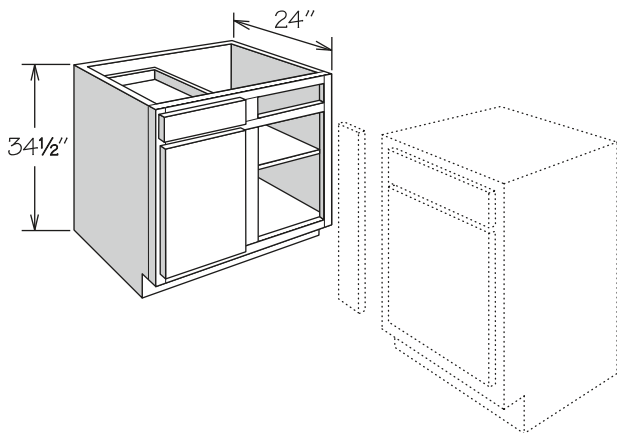
WOOD SPIN UNIT

CBS36 WD

PLASTIC SPIN UNIT

CBS36

Blind Corner Base



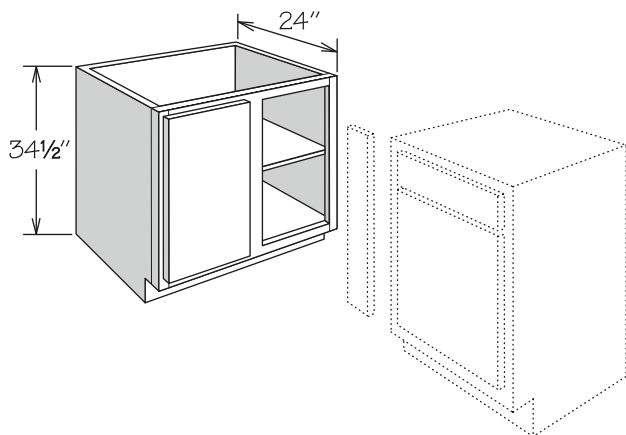
- Full-depth adjustable shelf
- Blind base door and drawer are installed in the left section
- Door and drawer can be reversed in the field as blind sections are identical
- Includes 1/8" panel to cover blind opening (field trim and install)
- Refer to the Blind Corner Base Installation chart on page 98 for specifications
- Recessed Toe Kick Both Option (RTKB) available only
- Must order Universal Filler separately
- Center support for shelf provided (excluding BLB36/39 and BLB39/42)

AH
APC
CFO
FE
PE
RD
RTK
VTK

1 SHELF

BLB36/39
BLB39/42
BLB42/45
BLB45/48
BLB48/51

Full Height Blind Corner Base



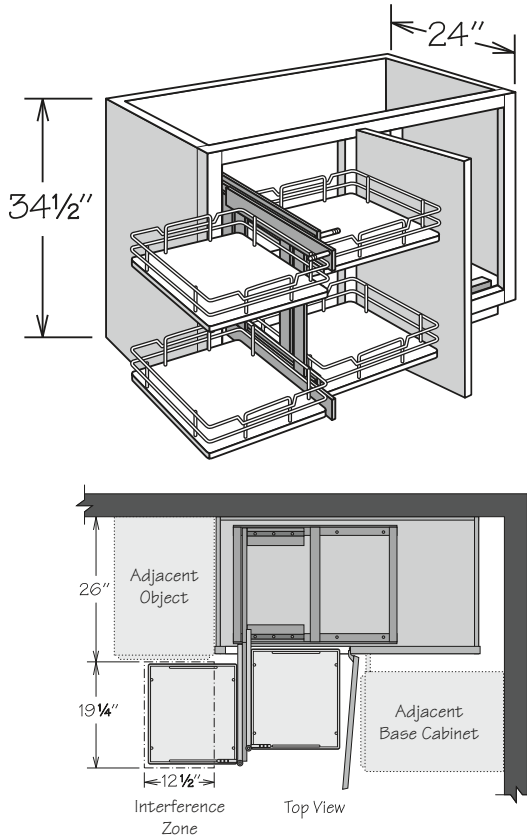
- Full-depth adjustable shelf
- Center support for shelf provided (excluding BLB36/39 FH and BLB39/42 FH)
- Blind base door is installed in the left section
- Door can be reversed in the field as blind sections are identical
- Includes 1/8" panel to cover blind opening (field trim and install)
- Refer to the Blind Corner Base Installation chart on page 98 for specifications
- Recessed Toe Kick Both Option (RTKB) available only
- Must order Universal Filler separately

AH
APC
CFO
FE
PE
RD
RTK
VTK

1 SHELF

BLB36/39 FH
BLB39/42 FH
BLB42/45 FH
BLB45/48 FH
BLB48/51 FH

Blind Corner Base - Pull-Out Kit



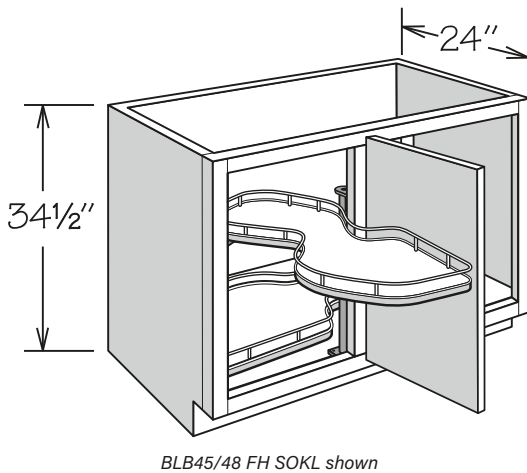
- Full-height door
- Blind base door is installed in the left section
- Door and Pull-Out Kit can be reversed in the field as blind sections are identical
- Includes 1/8" panel to cover blind opening (field trim and install)
- Refer to the Blind Corner Base Installation Chart on page 98 for specifications
- Recessed Toe Kick Both Option (RTKB) available only
- Pull-Out kit:
 - » Features two-tiered organizer with four chrome finish wire shelves and engineered wood bottoms with woodgrain look
 - » Features full-extension, 100-pound rated glides
 - » Supports up to 27 pounds per front shelf and 34 pounds per back shelf
 - » Packaged separately for field installation
 - » Mounts to cabinet floor
- Unit requires 19 1/4" of clearance in front of cabinet to pull the unit out, and 12 1/2" of side clearance to slide the unit over
- Pull-Out kit remains fully functional with use of Hinge Restriction Clip (86° angle) on blind base door
- Baskets are able to be repositioned to allow clearance of deeper adjacent objects up to 26"

AH
APC
FE
PE
RTK
VTK

PULL-OUT KIT

BLB45/48 FH POK
BLB48/51 FH POK

Blind Corner Base - Swing-Out Kit



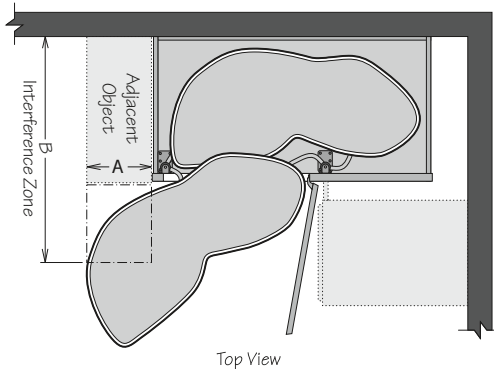
BLB45/48 FH SOKL shown

- Full-height door
- Features Furniture Ends standard
- Blind base door is installed in the left section
- Door can be reversed in the field as blind sections are identical, kit is not reversible and must be ordered as left or right
- Includes 1/8" panel to cover blind opening (field trim and install)
- Refer to the Blind Corner Base Installation Chart on page 98 for specifications
- Recessed Toe Kick Both Option (RTKB) available only
- Swing-Out kit:
 - » Must be ordered left or right
 - » Features two-tiered organizer with two chrome finish wire shelves and engineered wood bottoms with woodgrain look
- Swing-Out kit remains fully functional with use of Hinge Restriction Clip (86° angle) on blind base door
- Supports up to 55 pounds per shelf
 - » Packaged separately for field installation
 - » Mounts to cabinet side panel and telescopic pole (included)

AH
APC
RTK
VTK

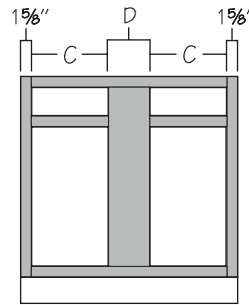
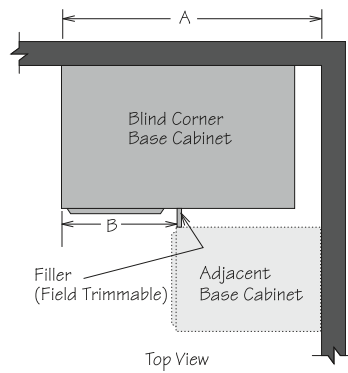
SWING-OUT KIT

BLB45/48 FH SOKL
BLB45/48 FH SOKR
BLB48/51 FH SOKL
BLB48/51 FH SOKR

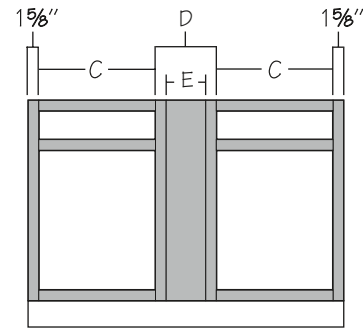


A (Distance from edge of BLB frame)	0"	3"	6"	9"	12"	13"
B (Maximum Depth of Adjacent Object)	24 7/8"	25 1/2"	27 1/2"	28 5/8"	32 1/4"	no interference

Blind Corner Base Installation Chart



BLB36/39 - BLB45/48



BLB45/48 FH, BLB48/51, BLB48/51 FH

Full Overlay Door Styles

Full Overlay door styles require decorative hardware, which has been calculated into dimensions.

*Dimension requirements do not include optional Overlay Fillers - add 7/8" if Overlay Fillers will be used, except for BLB48/51 add 1/2".

Cabinet	Actual Cabinet Width	Wall Space A			Exposed Frame B		C Door Opening	Door(s)	D	E
		Minimum Space*	Maximum Pull	Maximum Space	Minimum Space*	Maximum Space				
BLB36/39	27"	38 1/4"	1 3/4"	40"	14 1/4"	16"	8 3/4"	DR1224	6 1/4"	-
BLB36/39 FH	27"	38 1/4"	1 3/4"	40"	14 1/4"	16"	8 3/4"	DR12FH	6 1/4"	-
BLB39/42	33"	41 1/4"	1 3/4"	43"	17 1/4"	19"	11 3/4"	DR1524	6 1/4"	-
BLB39/42 FH	33"	41 1/4"	1 3/4"	43"	17 1/4"	19"	11 3/4"	DR15FH	6 1/4"	-
BLB42/45	39"	44 1/4"	1 3/4"	46"	20 1/4"	22"	14 3/4"	DR1824	6 1/4"	-
BLB42/45 FH	39"	44 1/4"	1 3/4"	46"	20 1/4"	22"	14 3/4"	DR18FH	6 1/4"	-
BLB45/48	45"	47 1/4"	1 3/4"	49"	23 1/4"	25"	17 3/4"	DR2124	6 1/4"	-
BLB45/48 FH	45"	47 1/4"	1 3/4"	49"	23 1/4"	25"	17 3/4"	DR21FH	6 1/4"	3"
BLB48/51	48"	48"	4"	52"	24"	28"	17 3/4"	DR2124	9 1/4"	6"
BLB48/51 FH	48"	48"	4"	52"	24"	28"	17 3/4"	DR21FH	9 1/4"	6"

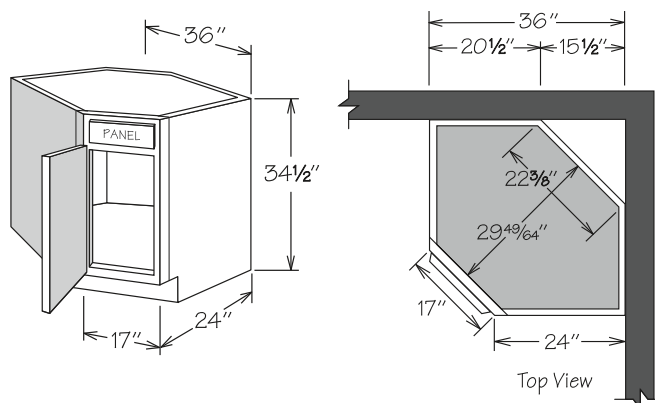
Partial Overlay Door Styles

Wall Space A requirements include optional decorative hardware clearance.

1/4" may be deducted if decorative hardware is not used.

Cabinet	Actual Cabinet Width	Wall Space A			Exposed Frame B		C Door Opening	Door(s)	D	E
		Minimum Space	Maximum Pull	Maximum Space	Minimum Space	Maximum Space				
BLB36/39	27"	37 3/8"	2 5/8"	40"	13 3/8"	16"	8 3/4"	DR1224	6 1/4"	-
BLB36/39 FH	27"	37 3/8"	2 5/8"	40"	13 3/8"	16"	8 3/4"	DR1230	6 1/4"	-
BLB39/42	33"	40 3/8"	2 5/8"	43"	16 3/8"	19"	11 3/4"	DR1524	6 1/4"	-
BLB39/42 FH	33"	40 3/8"	2 5/8"	43"	16 3/8"	19"	11 3/4"	DR1530	6 1/4"	-
BLB42/45	39"	43 3/8"	2 5/8"	46"	19 3/8"	22"	14 3/4"	DR1824	6 1/4"	-
BLB42/45 FH	39"	43 3/8"	2 5/8"	46"	19 3/8"	22"	14 3/4"	DR1830	6 1/4"	-
BLB45/48	45"	46 3/8"	2 5/8"	49"	22 3/8"	25"	17 3/4"	DR2124	6 1/4"	-
BLB45/48 FH	45"	46 3/8"	2 5/8"	49"	22 3/8"	25"	17 3/4"	DR2130	6 1/4"	3"
BLB48/51	48"	48"	4"	52"	24"	28"	17 3/4"	DR2124	9 1/4"	6"
BLB48/51 FH	48"	48"	4"	52"	24"	28"	17 3/4"	DR2130	9 1/4"	6"

BASE CABINETS

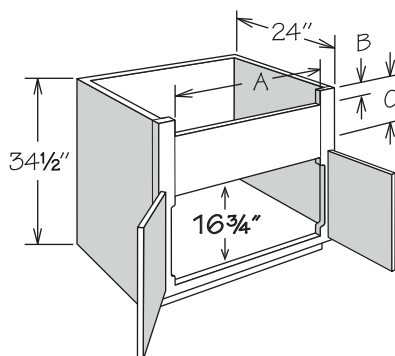


- No shelf
- Sides are finished
- A minimum of 32" is recommended to fit through doorway
- Additional space recommended if appliance is installed on either side of this cabinet for proper appliance door operation
- Cabinet features solid top which must be field cut for sink installation as per manufacturer's specifications
- Maximum sink width is 22 $\frac{3}{4}$ " if cut out is 4" back from face of front frame
- Refer to sink manufacturer's specifications for adequate clearance and required installation materials
- Touch Up Kit included

AH
APC
FE
PE
VTK

CSB36

Deep Sink/Range Base • 2 Butt Doors

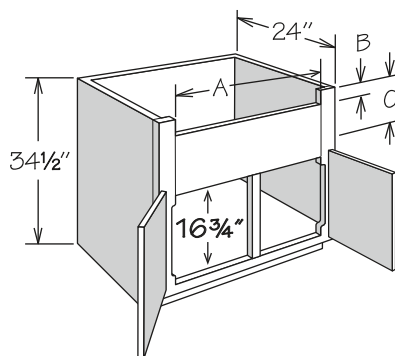


- No shelf
- Accommodates farm sinks
- Apron stiles are 3 1/8" wide and trimmable
- A cutout exists in the door area where the 3 1/8" stiles are routed to 1 5/8"
- Refer to sink or appliance manufacturer's specifications for adequate clearance and required installation materials
- Touch Up Kit included

AH
APC
FE
PE
RD
RTK
VTK

	A-MIN.	A-MAX.	B	C-MAX FOL	C-MAX POL
DSB30 BUTT	23 ¾"	28"	2 7/8"	10"	10 ½"
DSB33 BUTT	26 ¾"	31"	2 7/8"	10"	10 ½"
DSB36 BUTT	29 ¾"	34"	2 7/8"	10"	10 ½"

Deep Sink/Range Base • 2 Doors

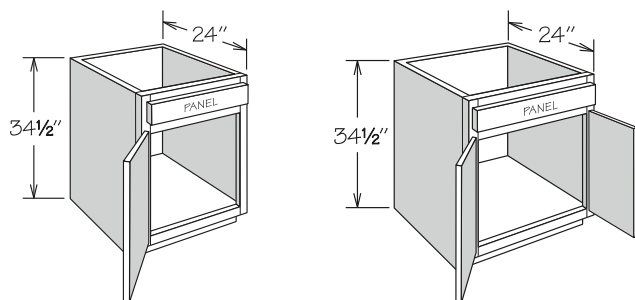


- No shelf
- Accommodates farm sinks
- Apron stiles are 3 1/8" wide and trimmable
- A cutout exists in the door area where the 3 1/8" stiles are routed to 1 5/8"
- Refer to sink or appliance manufacturer's specifications for adequate clearance and required installation materials
- Touch Up Kit included

AH
APC
FE
PE
RD
RTK
VTK

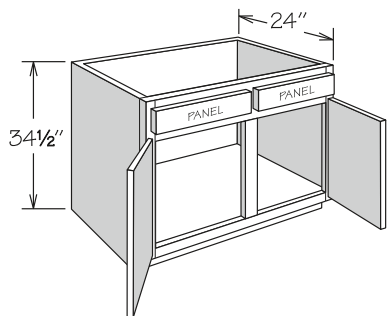
	A-MIN.	A-MAX.	B	C-MAX FOL	C-MAX POL
DSB39	32 ¾"	37"	2 7/8"	10"	10 ½"

Sink/Cooktop Base

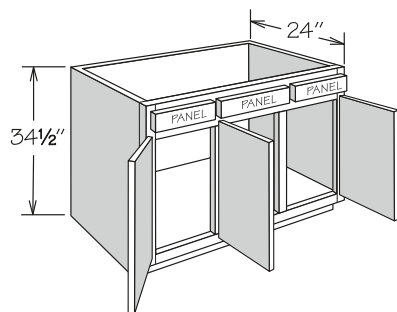


1 DOOR

2 BUTT DOORS



2 DOORS



3 DOORS

- No shelf
- Full-height back
- Subtract 1 1/2" from width and depth for available sink bowl opening
- Refer to sink or appliance manufacturer's specifications for adequate clearance and required installation materials
- Touch Up Kit included
- Single door cabinets are hinged left and can be reversed in the field

AH
APC
FE
PE
RD
RTK
VTK

1 DOOR

SB18
SB21
SB24

2 BUTT DOORS

SB24 BUTT
SB27 BUTT
SB30 BUTT
SB33 BUTT
SB36 BUTT

2 DOORS

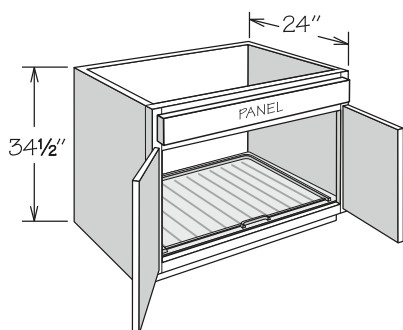
SB39
SB42
SB48

3 DOORS

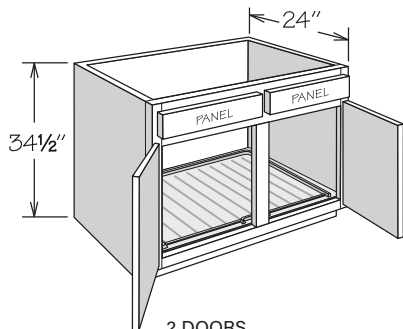
SB45

Sink Base • 1 Sink Base Mat

NEW! **PRODUCT**



2 BUTT DOORS



2 DOORS

- No shelf
- Full-height back
- Subtract 1 1/2" from width and depth for available sink bowl opening
- Refer to sink or appliance manufacturer's specifications for adequate clearance and required installation materials
- Touch Up Kit included
- Field installed accessory
- SBMAT39 is notched for center stile

AH
APC
FE
RTK
VTK

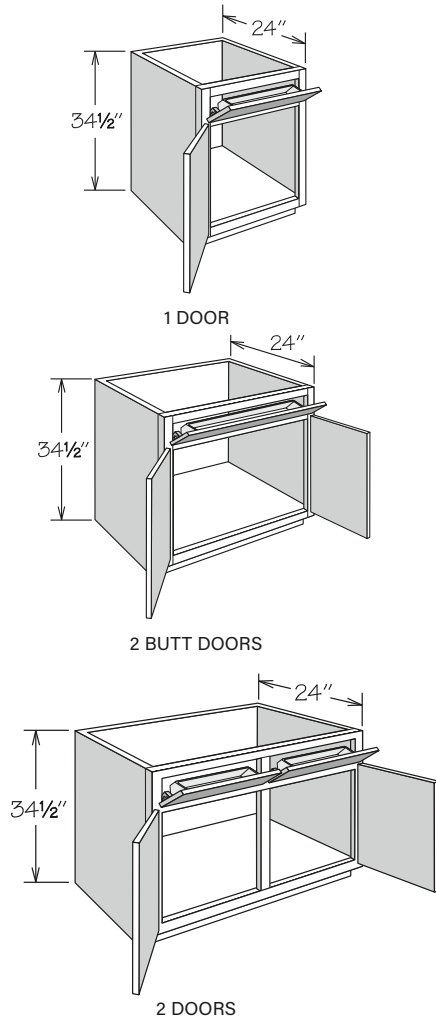
2 BUTT DOORS

SB30 BUTT SBMAT
SB33 BUTT SBMAT
SB36 BUTT SBMAT

2 DOORS

SB39 SBMAT

Sink Base • Stainless Tilt-Out Tray(s)



- No shelf
- Full-height back
- Subtract 1 1/2" from width and 3 3/4" from depth for available sink bowl opening
- Tilt-Out Trays are NOT dishwasher safe
- Refer to sink manufacturer's specifications for adequate clearance and required installation materials
- Touch Up Kit included
- Single door cabinets are hinged left and can be reversed in the field

AH
APC
FE
PE
RD
RTK
VTK

1 DOOR

SB21 STO
SB24 STO

2 BUTT DOORS

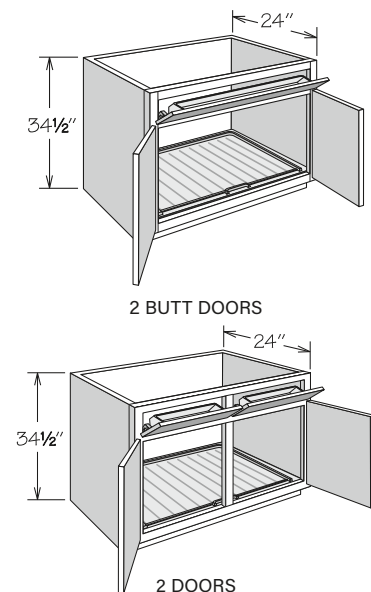
SB24 BUTT STO
SB27 BUTT STO
SB30 BUTT STO
SB33 BUTT STO
SB36 BUTT STO

2 DOORS

SB39 STO
SB42 STO
SB48 STO

Sink Base • 1 Sink Base Mat and Stainless Tilt-Out Tray(s)

NEW! PRODUCT



- No shelf
- Full-height back
- Subtract 1 1/2" from width and 3 3/4" from depth for available sink bowl opening
- Tilt-Out Trays are NOT dishwasher safe
- Refer to sink manufacturer's specifications for adequate clearance and required installation materials
- Touch Up Kit included
- Field installed accessory
- SBMAT39 is notched for center stile

AH
APC
FE
RTK
VTK

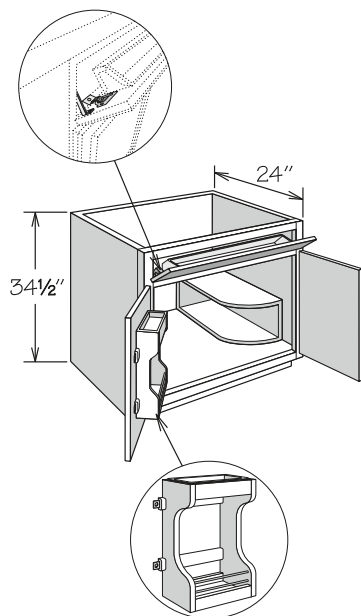
2 BUTT DOORS

SB30 BUTT STO SBMAT
SB33 BUTT STO SBMAT
SB36 BUTT STO SBMAT

2 DOORS

SB39 STO SBMAT

Sink Base Multi-Storage Cabinet



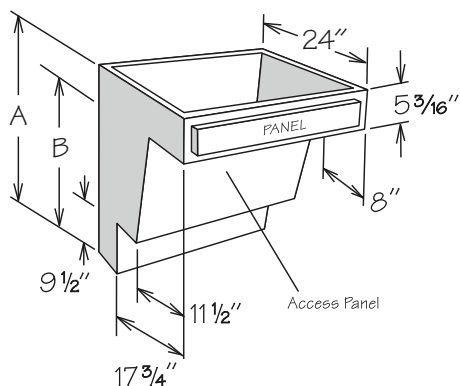
- Cabinet features:
 - » Factory installed Sink Base Door Storage Unit
 - » One Stainless Tilt-Out Tray
 - » Sink Base Multi-Storage Shelf (SBMSS) shipped separately for field installation left or right
- Full-height back
- Sink Base Multi-Storage Shelf measures 8 1/8" wide x 8" high x 17 1/2" deep
- Subtract 1 1/2" from width and 3 3/4" from depth for available sink bowl opening
- Tilt-Out Trays and Door Storage Unit trays are NOT dishwasher safe
- Refer to sink manufacturer's specifications for adequate clearance and required installation materials
- Touch Up Kit included

AH
APC
FE
PE
RTK
VTK

2 BUTT DOORS

SBMSC30 BUTT STO
SBMSC36 BUTT STO

Sink Base ■ Base Plumbing Skirt

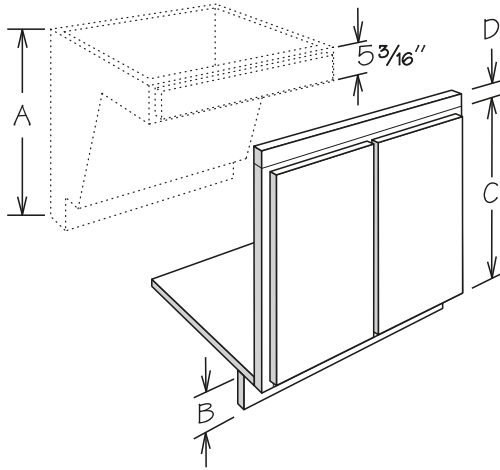


- Features kneehole drawer front - refer to door style section
- Removable front access panel attached with 4 sets of DDF Fasteners (DDF FASTENER qty 2)
- Features plywood sides
- Subtract 1 1/2" from width and depth for available sink bowl opening
- Maximum available height inside cabinet for sink bowl is 5"
- Water lines, drains, and P-Trap must be installed at 6" maximum from wall
- Refer to sink manufacturer's specifications for adequate clearance and required installation materials
- Matching toe kick included
- Must be installed between two cabinets or a cabinet and a wall
- May be used with Adaptable Sink Base Kit (ASB) - order separately

APC
FE

	A	B
32 1/2" High		
BPS30 UD	32 1/2"	27 5/16"
BPS36 UD	32 1/2"	27 5/16"
34 1/2" High		
BPS3034 UD	34 1/2"	29 5/16"
BPS3634 UD	34 1/2"	29 5/16"

Adaptable Sink Base Kit



- For use with Base Plumbing Skirt (BPS) - MUST be ordered separately
- Kit contains:
 - » Face frame with hinged butt doors
 - » One Tall Filler (S3S396)
 - » Four sets of Drawer Front Fasteners (DDF FASTENER qty 2)
 - » One Sink Floor (FL36)
 - » One Hardwood Cleat (HWC 2X4X96)
 - » Installation instructions
- Kit must be assembled in the field

A BPS	B DESIRED TOE KICK HEIGHT	C FACE FRAME HEIGHT	D TRIMMED S3S	KIT
32 1/2"	2"	24 1/2"	13 1/16"	ASB_34 KIT
32 1/2"	4"	20 5/8"	2 11/16"	ASB_32 KIT
34 1/2"	4"	24 1/2"	13 1/16"	ASB_34 KIT

20 5/8" Frame

ASB3032 KIT

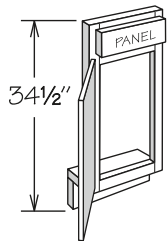
ASB3632 KIT

24 1/2" Frame

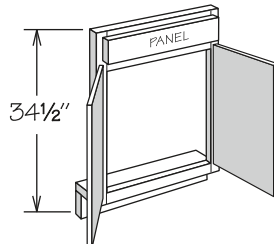
ASB3034 KIT

ASB3634 KIT

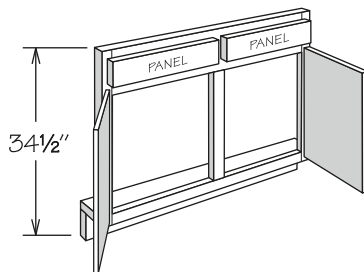
Sink/Cooktop Front



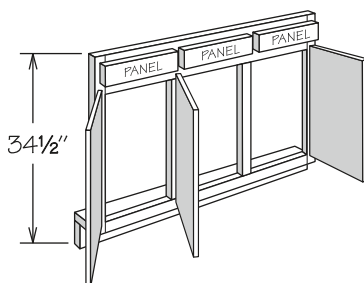
1 DOOR



2 BUTT DOORS



2 DOORS



3 DOORS

- SF45 is hinged as shown - can be reversed in the field
- Order floor and returns separately (field trimming may be required) - refer to Panel Section for availability (page 167)

1 DOOR

SF12
SF15
SF18
SF21
SF24

2 BUTT DOORS

SF24 BUTT
SF27 BUTT
SF30 BUTT
SF33 BUTT
SF36 BUTT

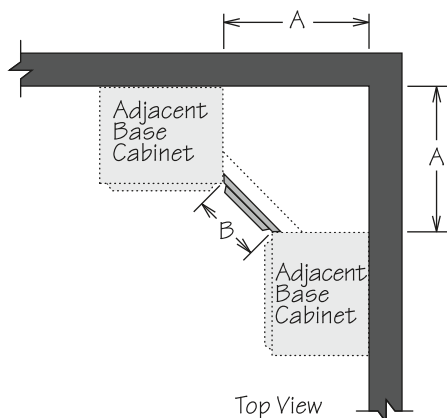
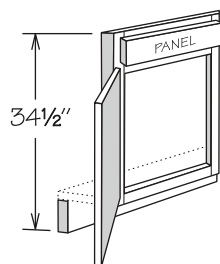
2 DOORS

SF39
SF42
SF48

3 DOORS

SF45

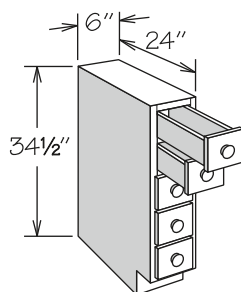
Corner Sink Front



- Vertical edges of frame are mitered to attach to adjacent cabinet frames
- Order floor and returns separately (field trimming may be required) – refer to Panel Section for availability (page 163)
- Filler not required for installation

	A	B
CSF36	35 ³¹ / ₃₂ "	16 ¹⁵ / ₁₆ "
CSF42	42 ¹¹ / ₃₂ "	25 ¹⁵ / ₁₆ "

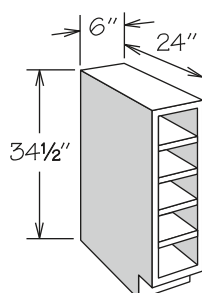
Base Spice Drawer Cabinet



- All door styles feature veneered engineered wood with exterior only finished to match cabinet box exterior
- Five individual full-depth drawers without glides
- Flush sides with no face frame or 1/4" reveals
- All wood drawer body with dovetail construction
- Wood door styles feature matching wood knobs
- Linen and Pewter door styles feature white porcelain knobs
- Features 1/2" thick slab drawer fronts for all door styles

BSDC6

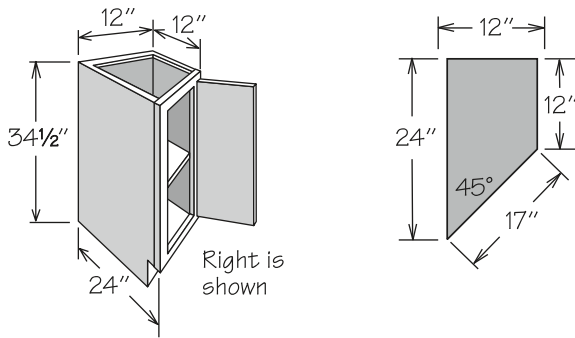
Base Wine Rack Cabinet



- All door styles feature veneered engineered wood with interior and exterior finished to match cabinet box exterior
- Accommodates five wine bottles (each opening measures: 5" high x 4 1/2" wide)
- 3/4" sides and shelves
- Flush sides with no face frame or 1/4" reveals
- Cannot be retrofitted with Base Spice drawers

BWRC6

Base End Angle - 1 Door



BEA12R FH is shown

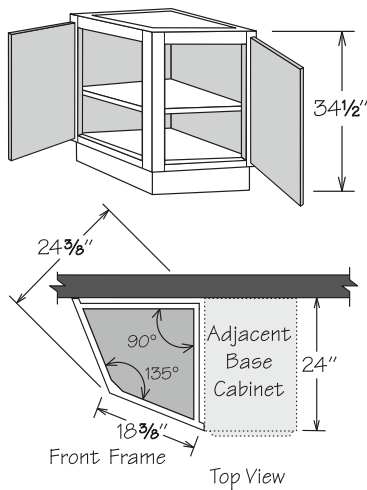
- Full-height door
- Full-depth adjustable shelf
- Only available with RD-23 through RD-18
- Recessed Toe Kick Option (RTK) only available on 12" side
- Cabinet dimensions are for reference purposes
ONLY – countertop must be measured and fabricated after cabinet installation

AH
FE
RD
RTK
VTK

1 SHELF

BEA12L FH
BEA12R FH

Base End Angle - 2 Doors



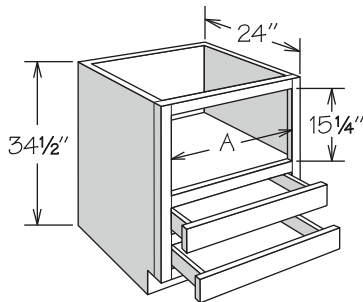
- Features a solid top
- Full-depth adjustable shelf
- Requires 24" x 24" space
- Cabinet dimensions are for reference purposes
ONLY – countertop must be measured and fabricated after cabinet installation

APC
FE
VTK

1 SHELF

BEA24 FH

Base Microwave Cabinet - 2 Drawers



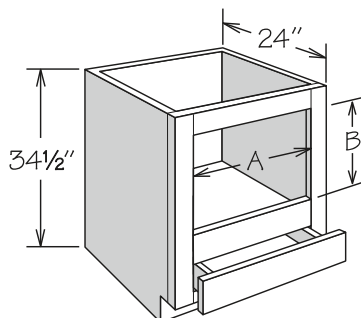
- Microwave opening finished to match cabinet box exterior
- Features two standard depth drawers
- Accent molding recommended (order separately)
- Designed to accommodate countertop style microwave, microwave drawers and select built-in microwaves
- Refer to appliance manufacturer's specifications for adequate clearances

AH
APC
FE
PE
RD
RTK
VTK

A

BMC24	20 3/4"
BMC27	23 3/4"
BMC30	26 3/4"

Built-In Base Microwave Cabinet

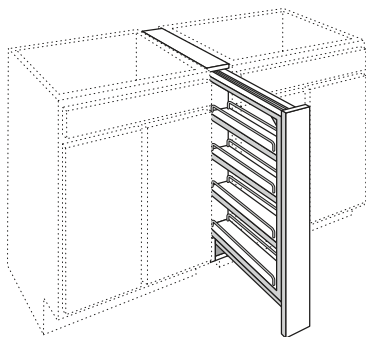


- Features one standard depth drawer
- 3 1/4" top rail is field trimmable
- 3 1/8" stiles
- Designed to accommodate built-in style microwaves with trim kit and microwave drawers
- Refer to appliance manufacturer's specifications for adequate clearances and required installation materials

AH
APC
FE
PE
RD
RTK
VTK

	A-MIN.	A-MAX.	B-MIN.	B-MAX.
BBMC24	17 3/4"	22"	15 5/8"	21 1/8"
BBMC27	20 3/4"	25"	15 5/8"	21 1/8"
BBMC30	23 3/4"	28"	15 5/8"	21 1/8"

Base Filler Pull-Out

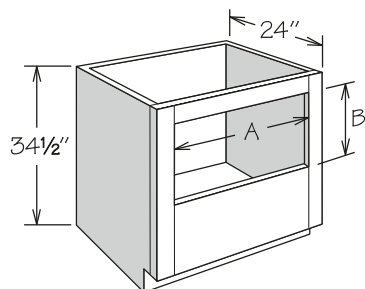


- Must be installed between two base cabinets behind the face frame in 3" (BFP3) or 6" (BFP6) of floor space
- Cannot be installed next to an appliance or at the end of a run
- No side panels or toe kick
- Filler shipped unattached for field installation
- An overlay filler is recommended for full overlay door styles (order separately)
- Two fixed and two adjustable wood shelves with chrome rails
- Decorative hardware strongly recommended

SHELF WIDTH

BFP3	2 1/8"
BFP6	4 3/4"

Base Oven Cabinet Universal



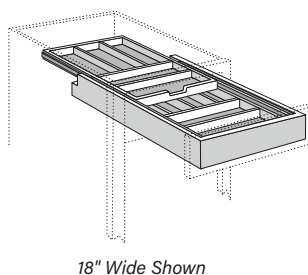
- Designed for mounting single oven below countertop
- 3" top rail is field removable and field trimmable
- 3 1/8" stiles
- Will accommodate certain cooktops (in conjunction with under-counter oven) or drop-in ranges
- Most ovens require a top rail of varying heights to create a finished look and clear the countertop overhang
- Refer to appliance manufacturer's specifications for adequate clearances and required installation materials

AH
APC
FE
PE
RD
RTK
VTK

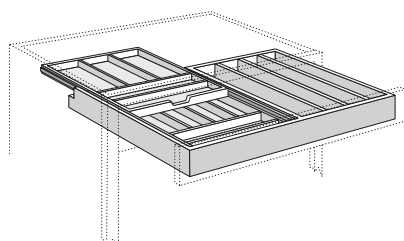
	A-MIN.	A-MAX.	B-MIN.	B-MAX.*
BOCU27	20 3/4"	24 15/16"	18 1/4"	29"
BOCU30	23 3/4"	27 15/16"	18 1/4"	29"
BOCU33	26 3/4"	30 15/16"	18 1/4"	29"

*Trimming/removal of top rail required

Wood Tiered Cutlery Divider Kit



18" Wide Shown

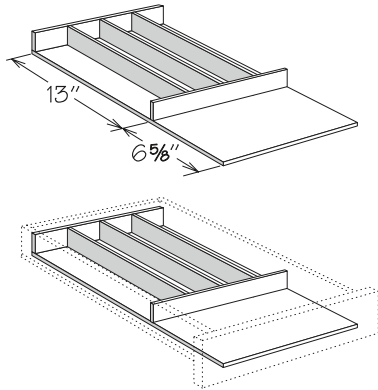


30" Wide Shown

- Available as factory installed for all door styles
- Field installed accessory replaces existing drawer box
- Glides are NOT included; reuse existing drawer glides
- Solid hardwood and plywood in natural finish
- Double-tiered cutlery divider slides independently from drawer
- Can be installed in cabinets with single drawer or side-by-side drawer configurations
- Not sized to fit cabinets with Reduced Depth Option
- Not field trimmable

WIDTH	UPPER SECTIONS	LOWER SECTIONS	COOKING UTEN-SIL SECTIONS
WTCDKFD15	5	5	-
WTCDKFD18	5	6	-
WTCDKFD21	6	7	-
WTCDKFD24	7	7	-
WTCDKFD30	5	5	4
WTCDKFD36	5	5	5

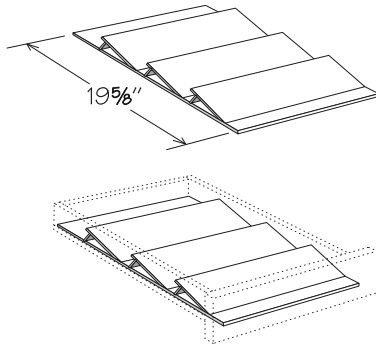
Cutlery Divider Kit



- Available as factory installed for all doors styles
- Field installation accessory
- Solid hardwood and plywood in natural finish
- Not sized to fit cabinets with Reduced Depth Option
- Not field trimmable

	NUMBER OF SECTIONS	WIDTH
CDAK15	4	9 3/4"
CDAK18	5	12 3/4"
CDAK21	6	15 3/4"
CDAK24	6	18 3/4"
CDAK30	7	24 3/4"
CDAK36	8	30 3/4"

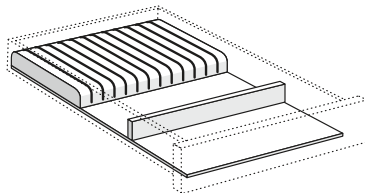
Spice Drawer Insert Kit



- Available as factory installed for all doors styles
- Field installation accessory
- Solid hardwood and plywood in natural finish
- Accommodates most spice containers (not included)
- Not sized to fit cabinets with Reduced Depth Option
- Not field trimmable

	WIDTH
SDIAK15	9 3/4"
SDIAK18	12 3/4"
SDIAK21	15 3/4"
SDIAK24	18 3/4"

Knife Block Drawer Insert Kit



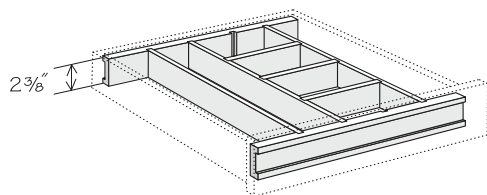
- Field installation accessory
- Solid hardwood in natural finish
- Not sized to fit cabinets with Reduced Depth Option

	NUMBER OF KNIFE SLOTS	WIDTH
KBDIK15	10	9 3/4"
KBDIK18	13	12 3/4"
KBDIK21	16	15 3/4"
KBDIK24	19	18 3/4"

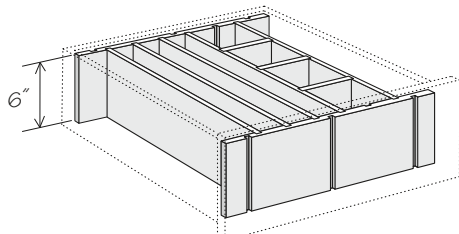
Adjustable Drawer Divider Kit

NEW!

SIZES



Standard Drawer Kit

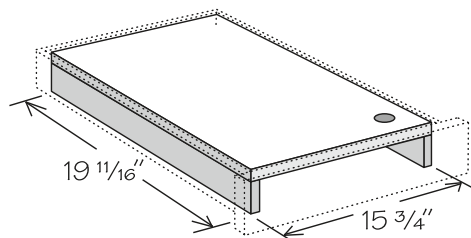


Large Drawer Kit

- Field installation accessory
- Standard Drawer Kits are used for standard height drawers and can be field trimmed in width and depth to accommodate 15" - 36" wide drawers and cabinets with the Reduced Depth Option
- Large Drawer Kits are used for large drawers and can be field trimmed in width and depth to accommodate 21" - 36" wide drawers and cabinets with the Reduced Depth Option
- Kit includes:
 - » Front and back panels with grooves
 - » Vertical dividers - two are grooved to accept horizontal dividers
 - » Horizontal dividers
 - » Installation screws

	NUMBER OF VERTICAL DIVIDERS	NUMBER OF HORIZONTAL DIVIDERS
Standard Drawer Kit		
ADIK15/18	4	3
ADIK21/24	4	3
ADIK27/30	5	3
ADIK33/36	9	3
Large Drawer Kit		
ADDIK21/24	4	3
ADDIK27/30	5	3
ADDIK33/36	6	3

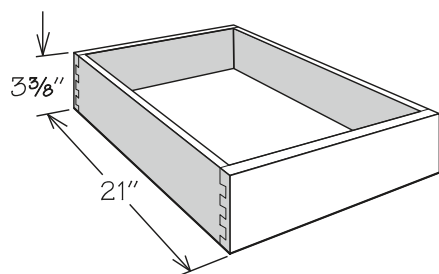
Drawer Work Surface



- Field installation accessory
- Sized to fit in a standard depth 21" wide drawer - field trimmable to fit additional drawer sizes
- Work surface only - not to be used as a cutting board
- Workboard sits on wooden supports to flush out top of drawer
- Not sized to fit cabinets with Reduced Depth Option

DWS21

Deep Roll-Out Tray Kit

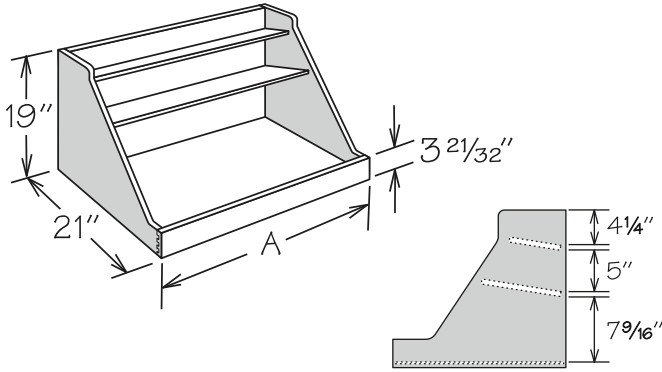


- Field installation accessory
- Natural finish dovetail drawer with engineered wood bottom
- Includes tray, all glide hardware and installation instructions
- DROT drill template is required for all two door cabinets that have a center stile - contact Customer Care for drill template

RD

SINGLE DEEP ROLL-OUT TRAY KIT	4 PACK DEEP ROLL-OUT TRAY KIT	A
DROT12	DROT12-4K	7 3/4"
DROT15	DROT15-4K	10 3/4"
DROT18	DROT18-4K	13 3/4"
DROT19	-	15 1/4"
DROT21	DROT21-4K	16 3/4"
DROT24	DROT24-4K	19 3/4"
DROT27	DROT27-4K	22 3/4"
DROT30	DROT30-4K	25 3/4"
DROT33	DROT33-4K	28 3/4"
DROT36	DROT36-4K	31 3/4"

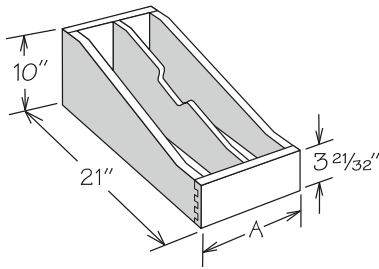
Base Pot & Pan Organizer Kit



- Field installation accessory
- Organizer features natural finish solid wood, wood veneer and dovetail (front only) construction with engineered wood bottom
- Top shelf of organizer measures 6 3/16" deep
- Middle shelf of organizer measures 9 3/4" deep
- Not sized to fit reduced depth cabinets

	A	BASE CABINET SIZE	OVEN CABINET SIZE
BPPOK24	19 3/4"	24"	27"
BPPOK27	22 3/4"	27"	30"
BPPOK30	25 3/4"	30"	33"
BPPOK33	28 3/4"	33"	—
BPPOK36	31 3/4"	36"	—

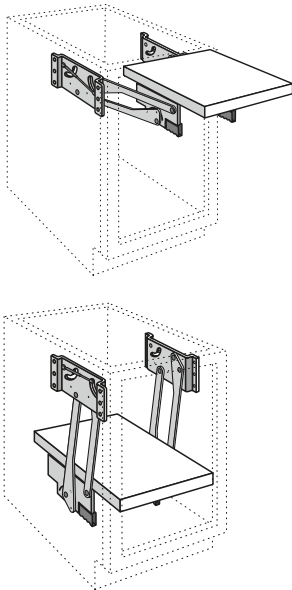
Roll-Out Tray Divider Kit



- Field installation accessory
- Natural finish solid wood and wood veneer and dovetail (front only) construction with engineered wood bottom
- ROTDK12 features two compartments (one partition)
- ROTDK15 features three compartments (two partitions)
- Partition(s) are field installed
- Not sized to fit reduced depth cabinets

	A	CABINET SIZE
ROTDK12	7 3/4"	12"
ROTDK15	10 3/4"	15"

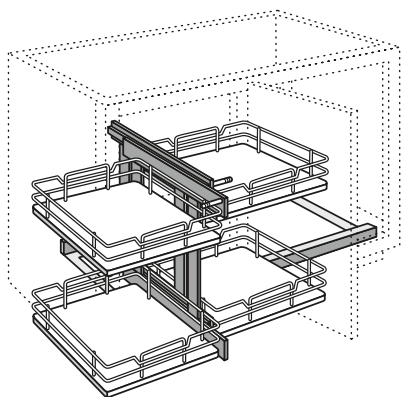
Base Mixer Lift Kit



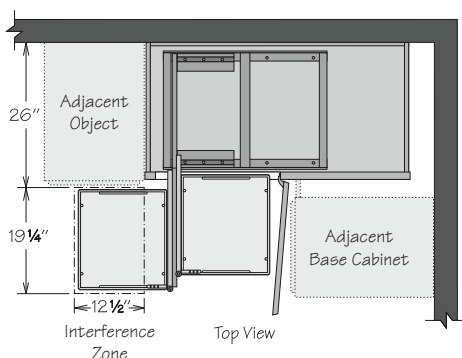
- Field installation accessory
- Includes 1 3/8" thick natural finish solid wood shelf and one pair of shock dampening, adjustable tension lifts
- Cannot be used with Deep Roll-Out Trays or adjustable shelf
- Supports up to 60 pounds
- Mounts to cabinet side panels
- Not sized to fit cabinets with Reduced Depth Option
- For use with B18 FH with Furniture Ends Option

BMLK18

Blind Base Pull-Out Kit

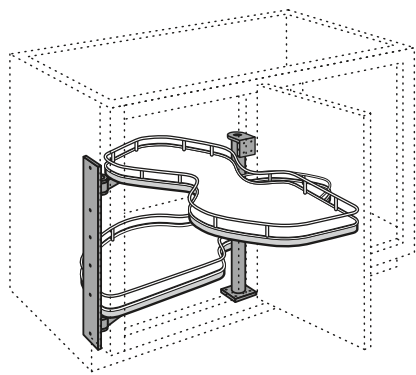


- Field installation accessory
- Can be reversed for left or right installation
- Two-tiered organizer features four chrome finish wire shelves with engineered wood bottoms with woodgrain look
- Features full-extension 100-pound rated glides
- Supports up to 27 pounds per front shelf and 34 pounds per back shelf
- Recommended for use with BLB45/48 FH or BLB48/51 FH, can be used with BLB45/48 or BLB48/51
- Mounts to cabinet floor
- Not sized to fit cabinets with Reduced Depth Option
- Unit requires 19¼" of clearance in front of cabinet to pull the unit out, and 12½" of side clearance to slide the unit over
- Pull-Out kit remains fully functional with use of Hinge Restriction Clip (86° angle) on blind base door
- Baskets are able to be repositioned to allow clearance of deeper adjacent objects up to 26"



BLBPOK45

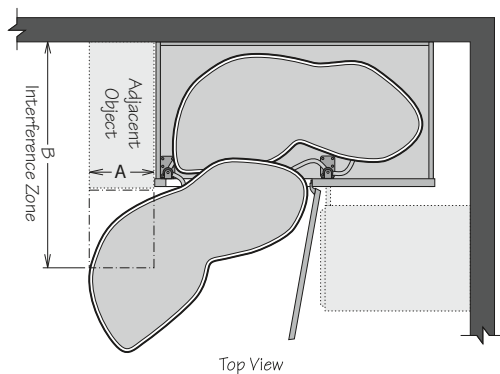
Blind Base Swing-Out Kit



BLBSOK45L (left swing kit) shown in a BLB45/48 FHR (right hinged door)

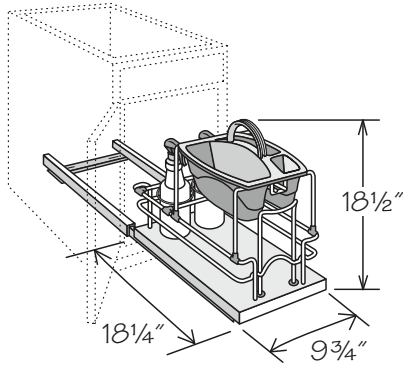
- Field installation accessory
- Kit is not reversible and must be ordered as left or right - BLB_L uses a BLBSOK45R and a BLB_R uses a BLBSOK45L
- Two-tiered organizer features two chrome finish wire shelves with engineered wood bottoms with woodgrain look
- Supports up to 55 pounds per shelf
- Recommended for use with BLB45/48 FH or BLB48/51 FH, can also be used with BLB45/48 or BLB48/51 - Furniture End Option required
- Swing-Out kit remains fully functional with use of Hinge Restriction Clip (86° angle) on blind base door
- Mounts to cabinet side panel and telescopic pole (included)
- Not sized to fit cabinets with Reduced Depth Option

BLBSOK45L
BLBSOK45R



A (Distance from edge of BLB frame)	0"	3"	6"	9"	12"	13"
B (Maximum Depth of Adjacent Object)	24⅞"	25½"	27½"	28⅝"	32¼"	no interference

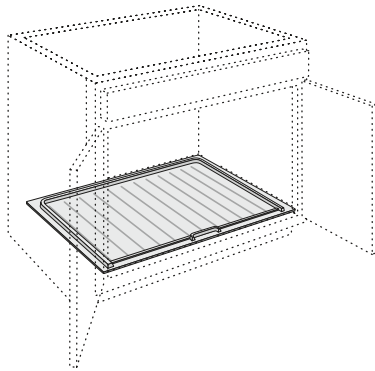
Cleaning Caddy Pullout Kit



- Field installation accessory
- Features metal and wire Pull-Out organizer with two 1L spray bottles and one removable gray cleaning caddy
- Unit is configurable so that spray bottles can be installed at the front or back
- Supports up to 75 pounds
- For use with 15" or wider base cabinet
- Mounts to cabinet floor
- For use in 24" deep base cabinets, 21" deep vanity cabinets or cabinets with RD-23 through RD-20

CCPOK

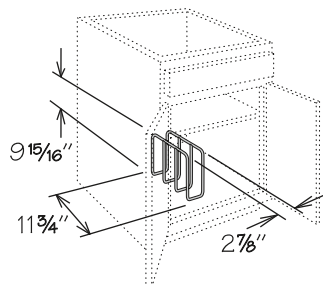
Sink Base Mat



- Field installation accessory
- Designed to funnel any leaks or spills out the front of the cabinet while protecting the cabinet floor
- Features flexible material in gray finish - easily trimmable
- Minor field trimming required for use in Deep Sink Base cabinets
- Not sized or trimmable to fit cabinets with Reduced Depth Option
- SBMAT39 is notched for center stile

SBMAT30
SBMAT33
SBMAT36
SBMAT39

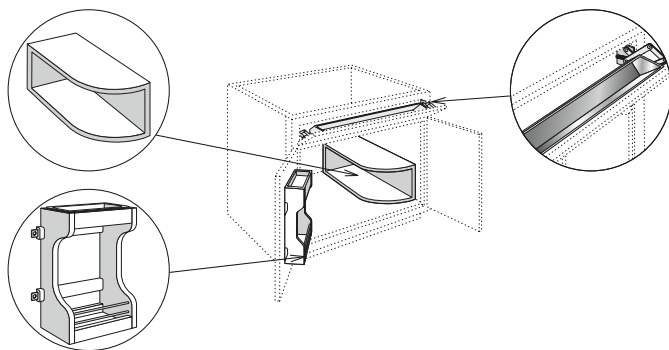
Cabinet Tray Divider



- Field installation accessory
- Chrome finish
- For use in 24" deep cabinets or cabinets with RD-23 through RD-14
- Mounting hardware included

TD3

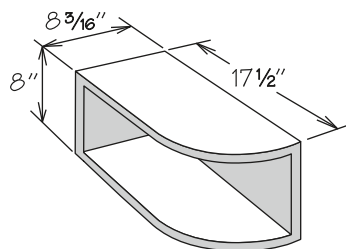
Sink Base Multi-Storage Kit



- SBMS30 KIT for 30" sink base only and now features:
 - » 15" Sink Base Door Storage Unit (SBDSU15)
 - » Sink Base Multi-Storage Shelf (SBMSS)
 - » One Stainless Tilt-Out Tray Kit (STO TRAY 22)
- SBMS36 KIT for 36" sink base only and now features:
 - » 18" Sink Base Door Storage Unit (SBDSU18)
 - » Sink Base Multi-Storage Shelf (SBMSS)
 - » One Stainless Tilt-Out Tray Kit (STO TRAY 22)
- Field installation accessory
- Not sized to fit cabinets with Reduced Depth
- Tilt-Out Trays and Door Storage Unit Trays are NOT dishwasher safe

SBMSC30 KIT
SBMSC36 KIT

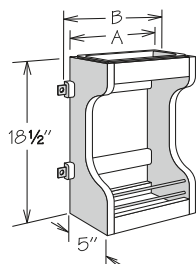
Sink Base Multi-Storage Shelf



- Field installation accessory
- 3/4" plywood with natural finish
- Invert for left or right installation

SBMSS

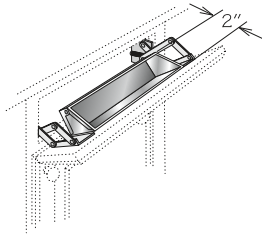
Sink Base Door Storage Unit



- Field installation accessory
- Natural finish solid wood
- Two fixed shelves
- Cannot be used with Deep Roll-Out Trays
- Full-depth shelf must be field trimmed to half-depth
- Removable white plastic tray is NOT dishwasher safe
- SBDSU15 mounts to 15" or 16" wide base door
- SBDSU18 mounts to 18" or 19" wide base door
- Not sized to fit Deep Sink Base (DSB) cabinet doors

	A	B
SBDSU15	9"	10 1/2"
SBDSU18	10 1/2"	13 1/2"

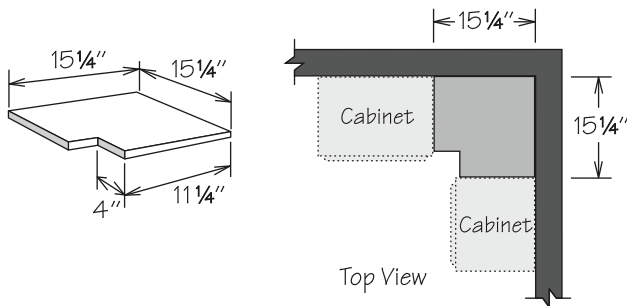
Stainless Tilt-Out Tray Kit



- Field installation accessory
- Kit features tray and one pair of scissor hinges
- Order units individually
- STO TRAY 11:
 - » Order one unit for SB18
- STO TRAY 14:
 - » Order one unit for SB21, SB24, SB27 or CSF42
 - » Order two units for SB39, SB42 or SB48
- STO TRAY 22:
 - » Order one unit for SB30, SB33 or SB36
- Sink front units match sink base sizes as noted above
- Tilt-Out Trays are NOT dishwasher safe

STO TRAY 11
STO TRAY 14
STO TRAY 22

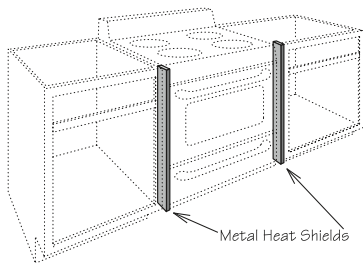
Blind Corner Closure



- Features 1/2" engineered wood with natural woodgrain finish on both sides
- Field trimmable

BLC1515

Heat Shield Kit



- Field installation accessory
- For use as heat shield on Edgeworth Duraform
- Protects doors and drawer fronts from adjacent heat source (built-in ovens, under counter ovens, drop-in or free-standing ranges)
- Kit features:
 - » Two 1/8" metal heat shields finished to match cabinet box exterior
 - » One strip of QM8 molding shield finished to match cabinet box exterior

HSK