

# Wall Elevation Drawing

See instructions on page 5.

## Materials List:

Before you begin measuring your space, make sure you have all the tools you need on hand.

**Tape Measure**  
(25' to ensure accuracy)

**Pencil with eraser**

**Scrap paper**

**Ruler or straight edge**

**Step ladder**

**Digital Camera**

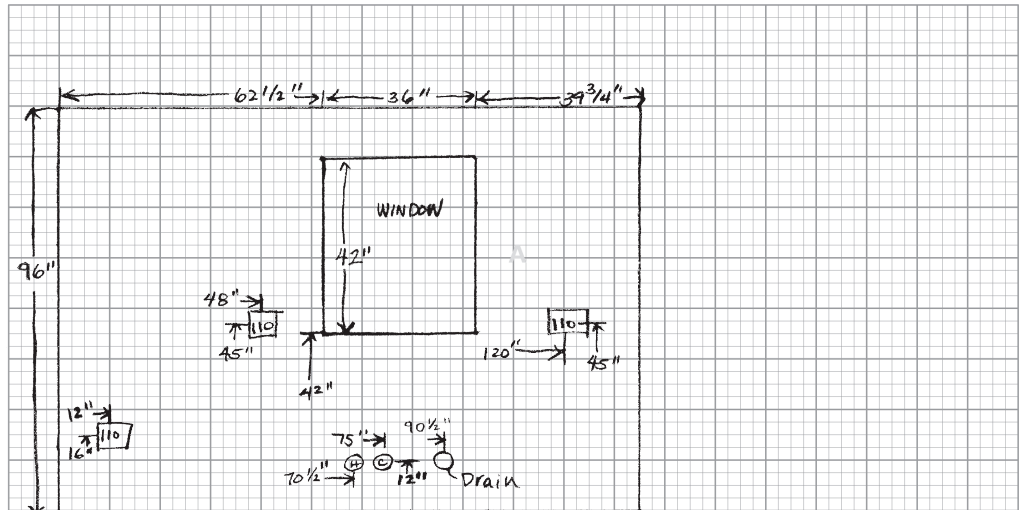
**Recommended:**

**Assistant**

**Digital measuring tool**

ELEVATIONS: SINK WALL, WALL A

Scale: 1/2" = 1'



Be sure to include these items on your drawing:

Wall lengths and heights,  $\leftarrow 159 \frac{1}{2} \rightarrow$   
and wall segment lengths  
(the space between items)

Width and height for doors  
& windows, including the  
frames (see tips on page 3)

Water lines & Drains  $\circ \circ \circ$

Gas lines  $\textcircled{G}$

220 electrical  
outlets  $\text{220}$

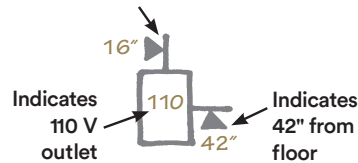
Standard electrical  
outlets  $\text{110}$

Switches, Phones, TV



**How to indicate location of electrical outlets and switches.**

Indicates 16-in from wall to center of outlet. (Measured from the left side, reverse if measuring from the right)



**Door Swing**

Show if the door opens in or out of the room, swings to the left or the right side.



## Floor Plan

See instructions on page 4.

Be sure to include these items on your drawing, using these symbols:

Wall Lengths  $\leftarrow 159 \frac{1}{2} \rightarrow$

Window & Door Openings  $\text{---} \text{---}$

Water Lines  $\text{H C}$

Drain Lines  $\text{DRAIN}$

Heating Ventilation and Air Conditioning (HVAC) Vents  $\text{---} \text{---}$

110 Volt Electrical Outlets  $\text{110}$

220 Volt Electrical Outlets  $\text{220}$

Ceiling Light Locations  $\otimes$

Wall Light Locations  $\otimes$

Ceiling Fan Locations  $\text{---} \text{---}$

Thermostat  $\text{---}$

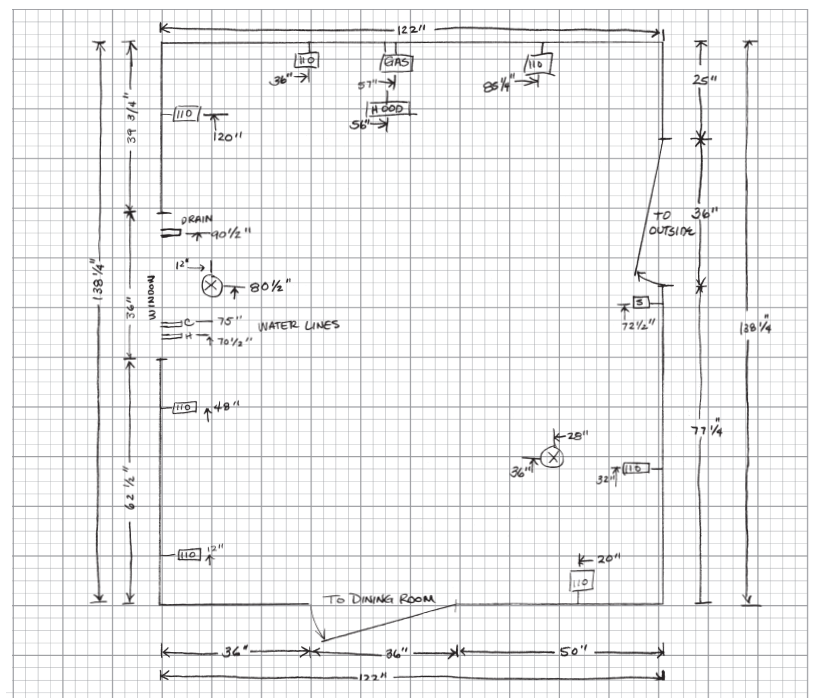
Switches, Phone and TV  $\text{S Ph TV}$

Gas Line  $\textcircled{G}$

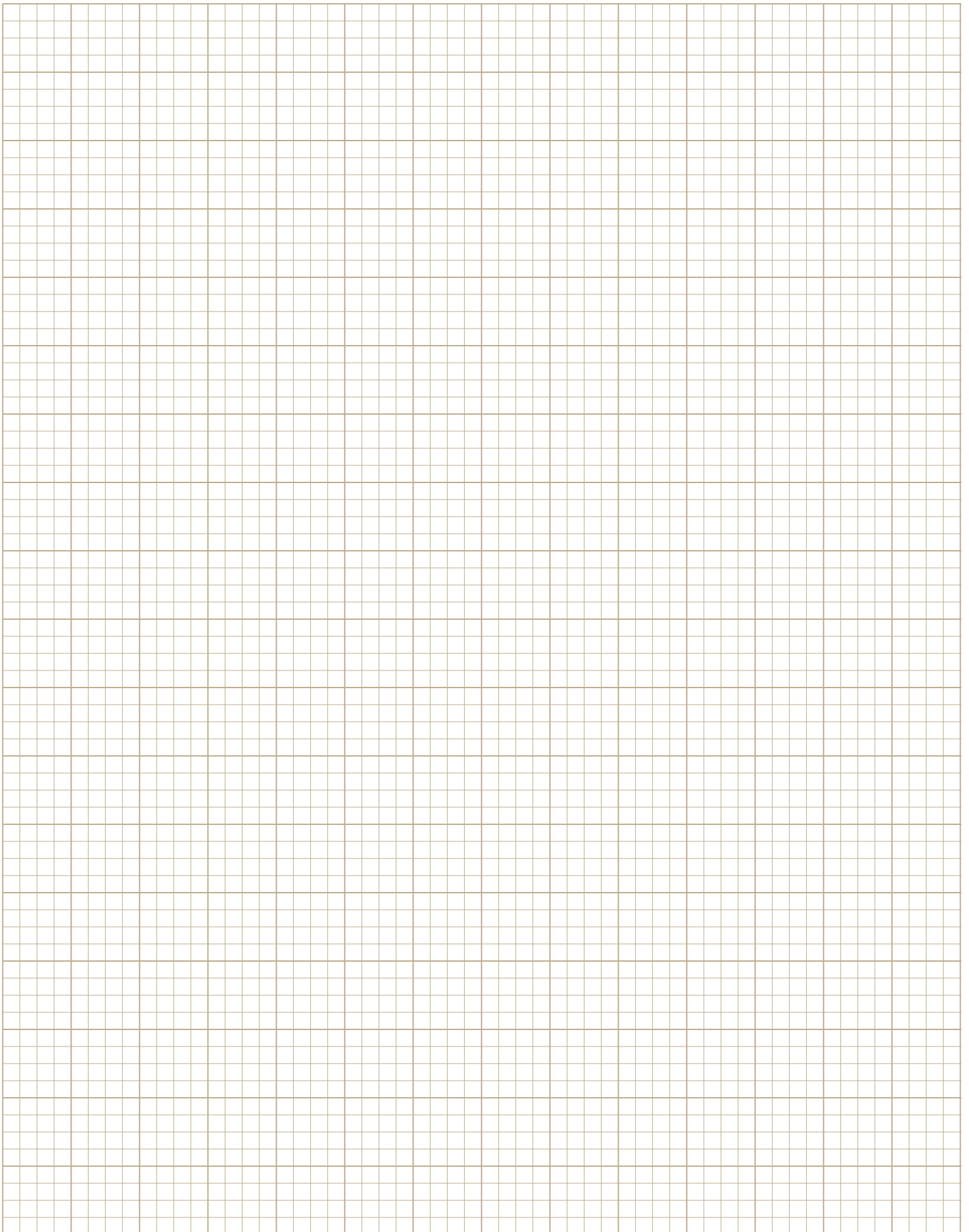
Range Hood  $\text{HOOD}$

### IMPORTANT:

Some cabinets or appliances may not fit through an existing doorway. Make sure you measure the width of all doorway openings on this floor plan drawing.



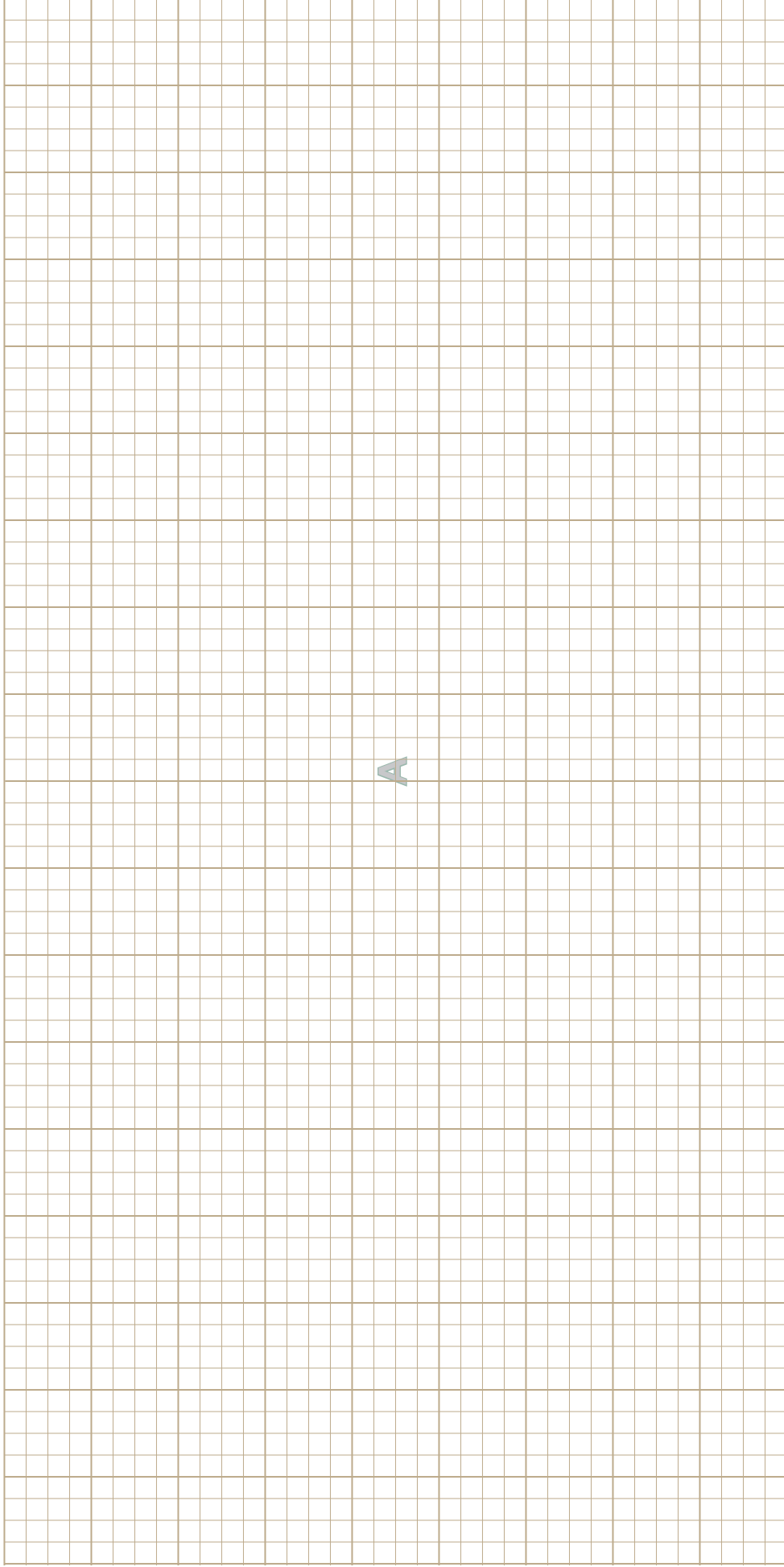
For more information, visit [Lowes.com/ShenandoahCabinetry](https://www.Lowes.com/ShenandoahCabinetry)



Scale:  $1/2'' = 1'$

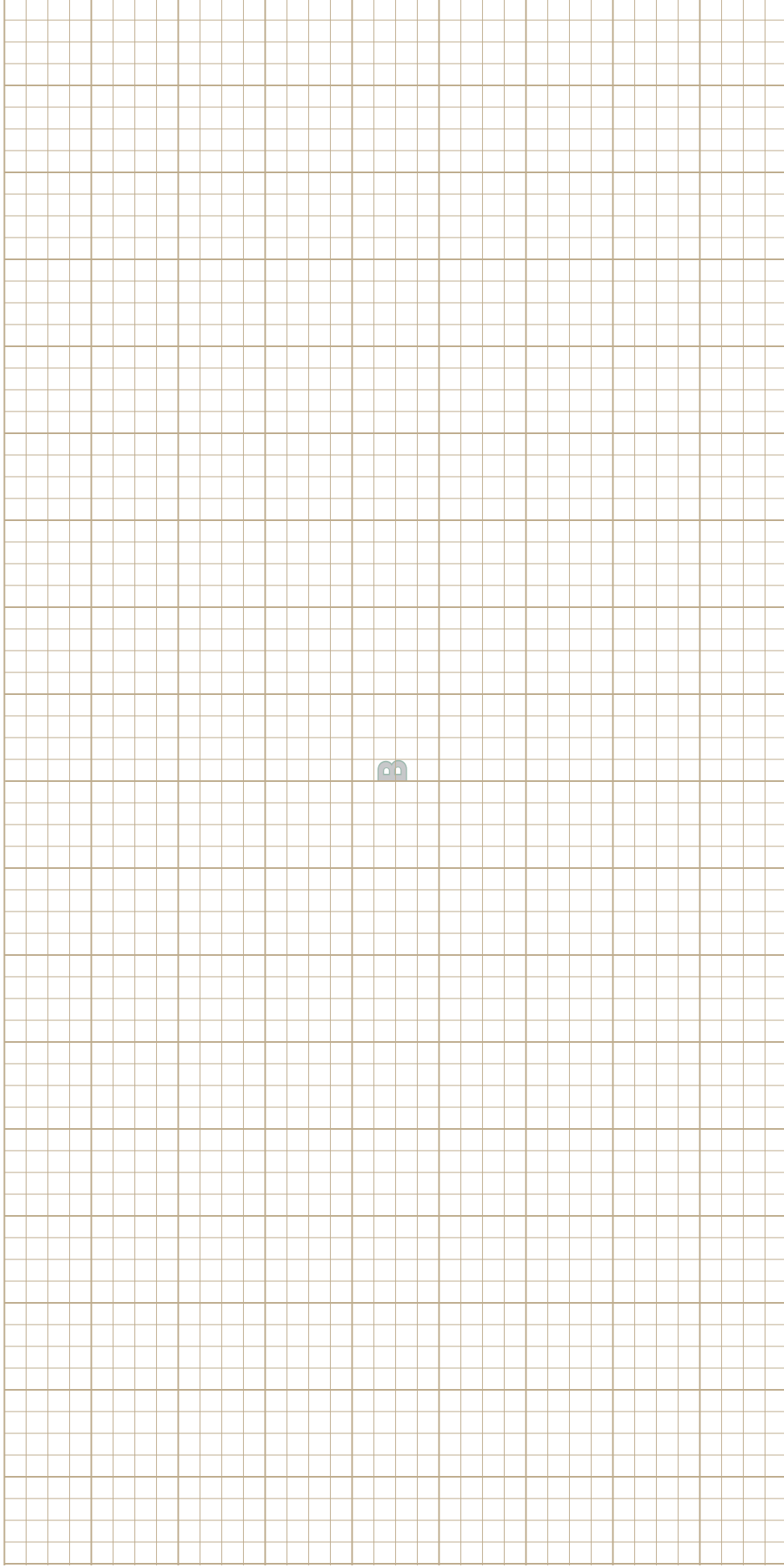
**ELEVATIONS: SINK WALL, WALL A**

Scale: 1/2" = 1'



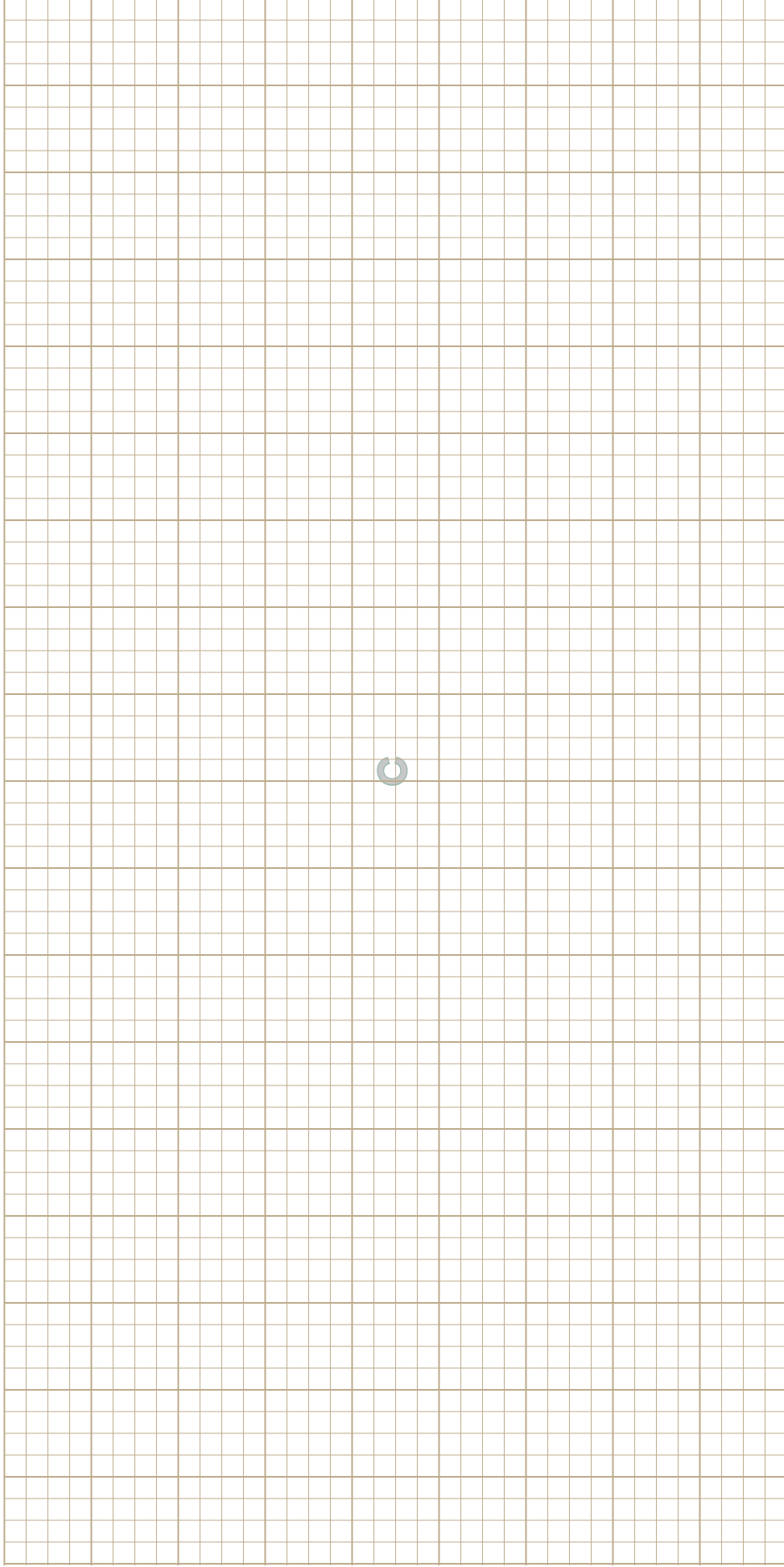
**ELEVATIONS: SINK WALL, WALL B**

Scale: 1/2" = 1'



**ELEVATIONS: SINK WALL, WALL C**

Scale: 1/2" = 1'



**ELEVATIONS: SINK WALL, WALL D**

Scale: 1/2" = 1'

